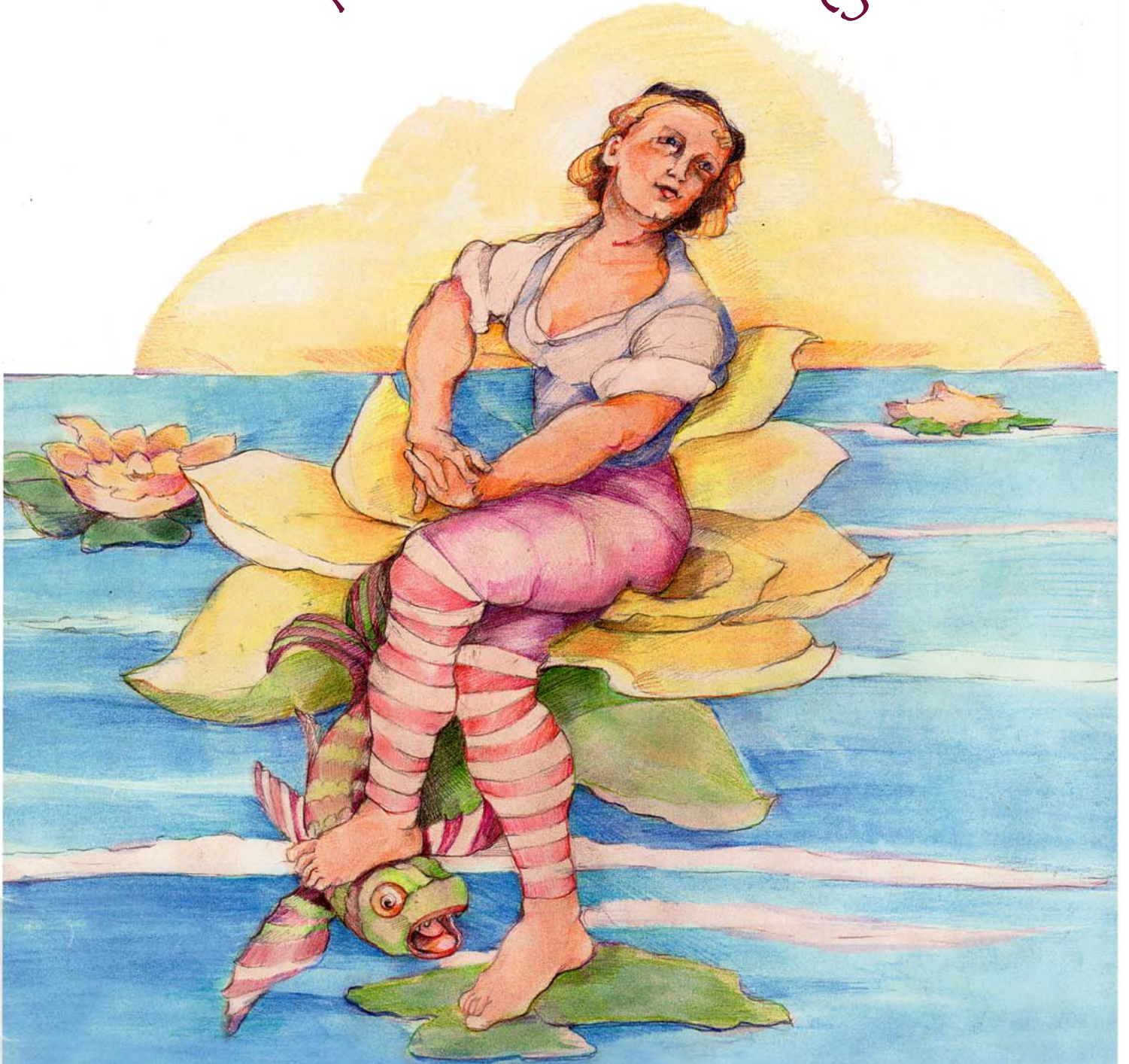


# Walker Avenue Nursery Plants for Wet Places



Wholesale Grower of CA Native & Ornamental Water Plants  
Ponds Water Gardens Wetlands Native Restoration Rain Gardens

WalkerAvenueNursery.com  
orders@WalkerAvenueNursery.com

phone 707.585.7865  
fax 707.341.5125

## Walker Avenue Nursery

Wholesale Grower of CA Native & Ornamental Aquatic Plants

### Plants for Wet Places

Our plants love those soggy areas of the garden!



Walker Avenue Nursery is dedicated to growing wetland, riparian, & pond plants for landscape contractors, architects & designers, native restoration/revegetation projects, and retail stores. Our plants are irrigated with 100% reclaimed water, free of synthetic pesticides and fertilizers. Grown in Sonoma County.

Our broad inventory of aquatic plants are grown in 4" to 15-gallon containers. We also grow natives in treepots and large plugs. Submerged plants are prepared in aquatic soil for immediate planting in a pond or marsh. Contract growing available. We offer delivery within 150 miles of our nursery. Pick up by appointment only.

We separate our water plants into six general categories.

Plants are identified by type in our catalogue and on our retail tags.

#### **Floating**

#### **Submerged**

#### **Emerging**

#### **Bog**

#### **Marginal**

#### **Landscape**

**Floating** wetland plants float free on the surface of the water with roots dangling in the water

**Submerged** plants must be below the water surface of a pond—leaves will float on or above water surface. Submerged plants cannot survive out of the water.

**Emerging** plants have their roots and part of their stems below the water surface, and their leaves and flower above the water surface. They can be planted from 2-6" below the water surface or in an area of the garden that is most always moist. Do not fully submerge.

**Bog** plants can be planted 2" below the water surface or in an area of the garden that is most always moist (these are called "Marsh Gardens"). This is the largest variety of water plants available. Do not fully submerge but keep wet at all times, in mud or sand.

**Marginal** plants grow at the interface of wetland and upland habitats. They prefer changing water levels and develop their roots as the water rises over their root ball and recedes.

**Landscape** water plants cannot be planted directly in a pond. They are landscape plants that like wet to very-wet soil. Do not submerge.

Bee Friendly - no neonicotinoids

Free of synthetic sprays/fertilizers

Irrigated with 100% recycled water

***Acer negundo (cn)*****California Box Elder**

Deciduous species of maple tree. Riparian tree tolerant to all weather conditions. Great shade tree. CA native.

Grows 10-15' tall. Keep moist. Fast growing.

Habit: Marginal

Bloom Color: pink

Lighting: Sun or filtered

USDA Zone: 2

***Achillea millefolium (cn)*****Common Yarrow**

Aromatic green fern-like foliage with long lasting clusters of white flowers. Attracts butterflies. Medicinal uses. Hardy. CA native.

Wide spreading. Can be mowed. Tolerates drought. Prefers sandy soil. Grows 2-3' tall.

Habit: Marginal

Bloom Color: white

Lighting: Full-Sun

USDA Zone: 3

***Acorus calamus (cn)*****Calamus**

Hardy wetland plant with sword-shaped green leaves. Medicinal plant. Edible.

Grows 3' height. Moist soil to 6" below water surface. Good watershed filter. Withstands frost.

Habit: Bog

Bloom Color:

Lighting: Sun or filtered

USDA Zone: 3

***Acorus calamus 'Variegatus'*****Variegated Calamus**

Hardy wetland plant, sword-shaped leaves with white, green, and burgandy stripes. Rhizomes rise above surface of soil. Medicinal qualities. Edible.

Grows 3' height. Moist soil to 6" below water surface. Good watershed filter. Withstands frost.

Habit: Bog

Bloom Color:

Lighting: Sun or filtered

USDA Zone: 3

***Acorus gramineus*****Japanese Sweet Flag**

Elegant grass-like plant with clumping, slender green leaves. Good for small water features, bowls, waterfall edge, soil retention. Edible.

Grows to 11" in height in rich soil and sufficient water. Damp soil to 2" below water surface.

Habit: Bog

Bloom Color:

Lighting: Sun or filtered

USDA Zone: 2

***Acorus gramineus 'Licorice'*****Japanese Sweet Flag 'Licorice'**

Elegant grass-like plant with clumping, slender green leaves, with strong licorice scent and flavor. Nice for edges.

Grows to 12" in height in rich soil and sufficient water. Damp soil to 2" below water surface.

Habit: Bog

Bloom Color:

Lighting: Sun or filtered

USDA Zone: 5

***Acorus gramineus 'Ogon'*****Golden Japanese Sweet Flag**

Short grass with bright golden yellow and green coloring. Good for digestible waterways and rock gardens. Edible.

Grows to 12" in height. Keep wet. Do not submerge. Good watershed filter.

Habit: Bog

Bloom Color:

Lighting: Sun or filtered

USDA Zone: 2

Bee Friendly - no neonicotinoids

Free of synthetic sprays/fertilizers

Irrigated with 100% recycled water

***Acorus gramineus 'Variegatus'*****Variegated Japanese Sweet Flag**

Short grass with white-striped leaves. Good for digestible waterways and rock gardens. Edible.

Grows to 12" height. Keep wet. Do not submerge. Good watershed filter.

Habit: Bog

Bloom Color:

Lighting: Sun or filtered

USDA Zone: 2

***Aesculus californica (cn)*****California Buckeye**

Beautiful small tree, smooth gray bark, green palm-like leaves. Fragrant pink-white flowers.

Drops leaves in summer. Attracts Swallowtail. CA native.

Grows to 15' or more. Enjoys water but tolerates drought. Toxic to mammals.

Habit: Marginal

Bloom Color: white

Lighting: Sun or filtered

USDA Zone:

***Alisma plantago-aquatica (cn)*****Water Plantain**

Elongated green leaves. White flowers grow on a branching, long stem. Medicinal qualities.

Edible. CA native.

Must be wet at all times. Grows to 3' tall.

Habit: Bog

Bloom Color: white

Lighting: Full-Sun

USDA Zone: 6

***Alnus incana ssp tenuifolia*****Mountain Alder**

Multi-stemmed shrub or small tree. Food source for wildlife. Good for site rehab, streambank stabilization, erosion control. CA native.

Tolerates cold, low-med elevations. Rich, moist soil. Grows 20-40' tall.

Habit: Marginal

Bloom Color:

Lighting: Sun or filtered

USDA Zone: 5

***Alnus rhombifolia (cn)*****White Alder**

Deciduous riparian tree. Fast growing. Tolerates heavy soil, sun or shade, and flooding.

Grows to 40' tall. Prefers moisture. Tolerates wind.

Habit: Bog

Bloom Color:

Lighting: Sun or filtered

USDA Zone: 7

***Alnus rubra (cn)*****Red Alder**

Fast growing coastal wetland tree. Red flowers, grayish-brown bark. Good for erosion control. CA native.

Grows to 75' tall. Salt tolerant. High nitrogen fixer.

Habit: Bog

Bloom Color:

Lighting: Sun or filtered

USDA Zone: 7

***Alocasia macrorrhizos*****Giant Elephant Ears**

Giant Taro. Upright very large, wavy, arrow-shaped leaves on thick green stalks. Greenish-white flower similar to calla. Semi-tropical.

Moist, well-drained soil. Grows to 7' tall and 5' wide. Many parts of plant are toxic. Cold hardy.

Habit: Landscape

Bloom Color:

Lighting: Shade

USDA Zone:

Bee Friendly - no neonicotinoids

Free of synthetic sprays/fertilizers

Irrigated with 100% recycled water

***Alternanthera ficoidea 'Red Threads'*****Joseph's Coat**

Bushy, water tolerant perennial. Slender, multi-colored leaves from deep purple to orange.

Very small pink burgandy flowers.

Grows in a mound up to 8" tall and 14" wide. Not frost tolerant. Full sun for best color.

Habit: Marginal      Bloom Color: pink      Lighting: Sun or filtered      USDA Zone:

***Anemopsis californica (cn)*****Yerba Mansa**

Conic white flowers and bluish-tinged leaves. Medicinal herb. Native to southwestern North America. CA native.

Prefers brackish water. Propagates by runners. Grows 12" tall and 2-3' wide.

Habit: Bog      Bloom Color: white      Lighting: Full-Sun      USDA Zone: 4

***Angelica archangelica*****Angelica**

Beautiful biennial, edible herb with glossy leaves. Puts forth a flowering stalk in second year.

Hardy.

Moisture loving. Good plant pond side. Grows to 2'-6' in second year. Reseed annually.

Habit: Landscape      Bloom Color: cream white      Lighting: Full-Sun      USDA Zone: 4

***Apocynum cannabinum (cn)*****Indian Hemp (Dogbane)**

Wild meadow plant with small white flowers in summer. Used by Native Americans for rope. CA native.

Fast growing. Grows to 3' tall. Very moist to dry soil.

Habit: Marginal      Bloom Color: white      Lighting: Sun or filtered      USDA Zone:

***Aponogeton distachyus*****Water Hawthorne**

Slender floating leaves with pungent white flower that rises above the water surface.

Blooms in winter and early spring. May go dormant in summer in hot climates. Prefers direct sun

Habit: Submerged      Bloom Color: white      Lighting: Full-Sun      USDA Zone: 4

***Artemisia douglasiana (cn)*****Mugwort**

Attractive fragrant foliage with history of medicinal uses. Leaves are green on top, silvery beneath. Indistinct flower. Good for birds. CA native.

Grows to 3' tall. Keep moist.

Habit: Marginal      Bloom Color:      Lighting: Sun or filtered      USDA Zone: 6a

***Asclepias curassavica*****Scarlet Milkweed**

Red, yellow & orange flowered perennial subshrub blooms spring to fall. Good for cut flowers.

Attracts butterflies, pollinators. Do not ingest.

Regularly irrigated soil with good drainage. Grows 3-4' tall. Dormant in winter.

Habit: Marginal      Bloom Color: red & yellow      Lighting: Sun or filtered      USDA Zone: 8b

Bee Friendly - no neonicotinoids

Free of synthetic sprays/fertilizers

Irrigated with 100% recycled water

***Asclepias fascicularis (cn)*****Narrowleaf Milkweed**

Elegant, narrow leaves, bushy, clusters of rosy-pink flowers. Butterfly food, attracts pollinators. Deer tolerant. CA native.

Tolerates moist soil & drought, garden & clay. Grows 1-3' tall. Easy to grow. Dormant in winter.

Habit: Marginal      Bloom Color: rosy-pink      Lighting: Sun or filtered      USDA Zone: 3

***Asclepias incarnata*****Swamp Milkweed**

Water-loving milkweed with white or pink flowers and dark green foliage. Attracts butterflies. Do not ingest.

Prefers moist soil but tolerates irrigated gardens. Grows 3-4' tall. Dormant in winter.

Habit: Bog      Bloom Color: white      Lighting: Full-Sun      USDA Zone: 3

***Asclepias speciosa (cn)*****Showy Milkweed**

Flower clusters 4-5", pink-lavender, fragrant. Large blue-green leaves. Low toxicity. Attracts butterflies, honeybees, other pollinators. CA native.

Prefers moist soil but tolerates drought. Grows 2-3' tall. Dormant in winter.

Habit: Marginal      Bloom Color: pink-lavender      Lighting: Full-Sun      USDA Zone: 3

***Aster chilensis (cn)*****California Aster**

Vigorous native perennial covered with soft lavender daisies. Attract butterflies. CA native.

Sprawling to upright. Grows 20-40" tall. Tolerate heavy watering and drought. Prune in winter.

Habit: Marginal      Bloom Color: lavender blue      Lighting: Full-Sun      USDA Zone:

***Baccharis glutinosa (cn)*****Marsh Baccharis**

Grows in salt marshes. Good nectar source. Green-brown stems and silver-green foliage, white flowers. CA native.

Grows to 3' tall. Keep moist.

Habit: Bog      Bloom Color: white      Lighting: Full-Sun      USDA Zone:

***Bacopa monniera*****Smooth Water Hyssop**

Small sprawling herb. Succulent small leaves, tiny white flowers. Good for waterfall areas and containers. Can be mowed.

Moist soil to several inches of submersion. Tolerates brackish water. Height to 6". Grows quickly.

Habit: Bog      Bloom Color: white      Lighting: Sun or filtered      USDA Zone: 8

***Baldellia ranunculoides*****Lesser Water Plantain**

Tiny pink flowers with delicate foliage - blooms throughout summer. Slender leaves grow 2-10" tall. Native to Europe. Rare.

Likes wet boggy soil. Can be submerged to 6". Spreads by runners.

Habit: Emerging      Bloom Color: pink      Lighting: Full-Sun      USDA Zone:

Bee Friendly - no neonicotinoids

Free of synthetic sprays/fertilizers

Irrigated with 100% recycled water

***Baumea rubiginosa 'Variegata'*****Golden Sword Rush**

Evergreen rush. Rigid upright spiked leaves, deep green with yellow stripe along one edge. Hardy in winter.

Prefers frequent irrigation. Will grow in moist soil. Grows to 3' tall.

Habit: Bog

Bloom Color:

Lighting: Sun or filtered

USDA Zone:

***Betula occidentalis (cn)*****Water Birch**

Multi-stemmed riparian shrub found along mountain streams. Bronze bark. Important habitat plant. CA native.

Grows to 30' tall. Flood tolerant. Moist, rich soil.

Habit: Bog

Bloom Color:

Lighting: Sun or filtered

USDA Zone: 5

***Billbergia nutans*****Queen's Tears**

Bromeliad with long trailing flowers and stalks that form cups. Flowers are pink and green and blue. Blooms in spring.

Grows to 24" tall. Remain evergreen in light frost. Drought and water tolerant. Good drainage.

Habit: Landscape

Bloom Color: pink, yellow, p

Lighting: Part-Sun

USDA Zone: 8

***Billbergia nutans variegata*****Variegated Queen's Tears**

Bromeliad with long trailing flowers and variegated stalks that form cups. Flowers are pink and green and blue. Blooms in spring.

Grows to 24" tall. Remain evergreen in light frost. Drought and water tolerant. Good drainage.

Habit: Landscape

Bloom Color: pink, yellow, p

Lighting: Part-Sun

USDA Zone: 8

***Bolboschoenus maritimus (cn)*****Seaside Bulrush**

Salt tolerant bulrush. Upright green stems. Ecologically important as wind & current buffer, reducing erosion. Provides wildlife habitat. CA native.

Grows to 5' tall. Prefers partial submersion or bog.

Habit: Bog

Bloom Color:

Lighting: Full-Sun

USDA Zone: 5

***C. glauca x C. x generalis hybrid*****Endeavor Canna**

True water canna hybrid with dark pink flowers. Narrow, lance-shaped blue-green leaves with red edge.

Grows 3-4' in height. Prefers sunny locations. Can be submerged to 6". Frost tender.

Habit: Bog

Bloom Color: dark pink

Lighting: Full-Sun

USDA Zone:

***C. glauca x C. x generalis hybrid*****Erebus Canna**

True water canna hybrid with pink coral flowers carried on corn stalk like plant. Narrow, blue-green leaves.

Grows 4-5' in height. Prefers sunny locations. Can be submerged to 6". Frost tender.

Habit: Bog

Bloom Color: salmon pink

Lighting: Full-Sun

USDA Zone:

Bee Friendly - no neonicotinoids

Free of synthetic sprays/fertilizers

Irrigated with 100% recycled water

***Calamagrostis nutkaensis (cn)*****Pacific Reed Grass**

Large bunch grass with wide green blades and attractive plume flowers. Good for woodland or meadow. Used in bioswales. Evergreen.

Grows 2-3' tall. Need some moisture. Deer resistant. Shade tolerant.

Habit: Marginal      Bloom Color:      Lighting: Sun or filtered      USDA Zone: 7

***Caltha palustris (cn)*****Marsh Marigold**

Large round leaf, buttercup yellow flowers, first to bloom in spring. Found along streams, marshes. Attracts insects. CA native.

Clumping Grows to 8-12" height. Prefers filtered sun and moist soil. May be summer dormant.

Habit: Bog      Bloom Color: yellow-gold      Lighting: Sun or filtered      USDA Zone: 3

***Caltha palustris 'Plena'*****Double Marsh Marigold**

Round green leaves with waxy texture. Yellow double button flowers.

Moist boggy soil. Grows 6"-12" in height.

Habit: Bog      Bloom Color: yellow-gold      Lighting: Part-Sun      USDA Zone:

***Caltha polypetala*****Giant Marsh Marigold**

Yellow flowers atop glossy dark green foliage. Blooms early spring; cut back in summer and will bloom in fall. Likes shade.

Can be submerged to 6". Winter dormant. Grows 24" height. Keep moist.

Habit: Bog      Bloom Color: gold-yellow      Lighting: Sun or filtered      USDA Zone: 4

***Calycanthus occidentalis (cn)*****Western Spice Bush**

Deciduous shrub with bright green foliage, red flowers with scent of wine. Grows along streams & rivers. CA native.

Likes heat. Keep moist. Grows 5-12' tall. Can be pruned as hedge or small tree.

Habit: Marginal      Bloom Color: red      Lighting: Sun or filtered      USDA Zone:

***Canna 'Florence Vaughn'*****Florence Vaughn Canna**

Large green leaves. Purple budstems topped with orange-and-red speckled yellow flowers.

Frequent flowering. Heirloom canna.

Grows to 6' tall. Does well as aquatic or marginal.

Habit: Bog      Bloom Color: orange, yellow,      Lighting: Full-Sun      USDA Zone:

***Canna 'Pink Sunburst'*****Pink Sunburst Canna**

Short variegated canna with mulicolor leaves and pink flowers.

Grows 2-3' tall. Prefers sunny locations. Can be submerged to 10". Brighter color in part shade.

Habit: Bog      Bloom Color: pink      Lighting: Sun or filtered      USDA Zone:



Bee Friendly - no neonicotinoids

Free of synthetic sprays/fertilizers

Irrigated with 100% recycled water

***Canna 'Black Knight'*****Black Knight Canna**

Red flower with striped blue-black cast leaves. Blooms throughout summer.

Grows 4'-6' tall. Prefers sunny locations. Can be submerged to 10".

Habit: Bog

Bloom Color: red

Lighting: Sun or filtered

USDA Zone:

***Canna 'Cleopatra'*****Cleopatra Canna**

Plant is randomly colored with flowers red and/or yellow and occasional burgandy variegation on leaves.

Grows 4'-6' tall. Prefers sunny locations. Can be submerged to 10".

Habit: Bog

Bloom Color: red, orange, ye

Lighting: Full-Sun

USDA Zone:

***Canna 'Herb's White'*****Herb's White Canna**

White plumaria-like flower and green leaves.

Grows 4'-6' tall. Prefers sunny locations. Can be submerged to 10".

Habit: Bog

Bloom Color: white

Lighting: Full-Sun

USDA Zone:

***Canna 'Intrigue'*****Intrigue Canna**

Large long brown leaves. Peach flowers. Grows well as aquatic or marginal. Very tall.

Grows 8-12' tall. Prefers sunny locations. Can be submerged to 10".

Habit: Bog

Bloom Color: peach

Lighting: Full-Sun

USDA Zone:

***Canna 'King Humbert'*****King Humbert Canna**

Orange plumaria-like flower with dark green-purple leaves.

Grows 4'-6' tall. Prefers sunny locations. Can be submerged to 10".

Habit: Bog

Bloom Color: orange

Lighting: Sun or filtered

USDA Zone:

***Canna 'Red King Humbert'*****Red King Humbert Canna**

Red plumaria-like flower with dark green-purple leaves.

Grows 4'-6' tall. Prefers sunny locations. Can be submerged to 10".

Habit: Bog

Bloom Color: red

Lighting: Sun or filtered

USDA Zone:

***Canna Australis*****Australis Canna**

Deep burgandy, shiny leaves with red flowers. Blooms throughout summer.

Grows 4'-6' tall. Prefers sunny locations. Can be submerged to 10".

Habit: Bog

Bloom Color: red

Lighting: Sun or filtered

USDA Zone:

Bee Friendly - no neonicotinoids

Free of synthetic sprays/fertilizers

Irrigated with 100% recycled water

***Canna 'Firecracker'*****Firecracker Canna**

Plumaria like fushia flower on corn stalk like plant with light green leaves.

Grows 4'-6' tall. Prefers sunny locations. Can be submerged to 10".

Habit: Bog

Bloom Color: red

Lighting: Full-Sun

USDA Zone:

***Canna flaccida*****Golden Canna**

True water canna hybrid with daffodil-like light yellow flowers on light green narrow leaves.

Native of Gulf Coast.

Grows 3-4' in height. Prefers sunny locations. Can be submerged to 10". Frost tender.

Habit: Bog

Bloom Color: yellow

Lighting: Full-Sun

USDA Zone:

***Canna indica 'Eileen Gallo'*****Eileen Gallo Canna**

Pale pink and yellow (apricot) flowers. Foliage is green with red veins.

Grows 4-6' tall. Prefers sunny locations. Can be submerged to 10".

Habit: Bog

Bloom Color: It rose

Lighting: Full-Sun

USDA Zone:

***Canna indica 'Phasion'*****Tropicana Canna**

Also called "Tropicanna" (registered). Bold gold, pink, burgandy, green & orangestriping on leaves. Orange flowers.

Grows 4-6' tall. Prefers sunny locations. Can be submerged to 10".

Habit: Bog

Bloom Color: orange

Lighting: Sun or filtered

USDA Zone:

***Canna 'Pretoria'*****Pretoria Canna**

Broad leaves with defined stripes of green and yellow. Orange flowers.

Grows 5'-6' tall. Prefers sunny locations. Can be submerged to 10".

Habit: Bog

Bloom Color: orange

Lighting: Sun or filtered

USDA Zone:

***Canna 'Stuttgart'*****Stuttgart Canna**

Large stripes of white and sea-green on leaves. Pale apricot flower. Beautiful foliage plant.

Keep moist and from intense sun. Grows 8'-12'.

Habit: Bog

Bloom Color: peach

Lighting: Part-Sun

USDA Zone:

***Canna 'The President'*****President Canna**

Showy red plumaria-like flowers on thick stalks with bright green broad leaves. Shorter variety.

Grows 4'-6' tall. Prefers sunny locations. Can be submerged to 10".

Habit: Bog

Bloom Color: red

Lighting: Full-Sun

USDA Zone:

Bee Friendly - no neonicotinoids

Free of synthetic sprays/fertilizers

Irrigated with 100% recycled water

***Canna 'Zulu'*****Zulu Canna**

Pink flowers with short broad reddish-black leaves. Medium size. Very attractive.

Grows 2-3' tall. Prefers sunny locations.

Habit: Bog

Bloom Color: hot pink

Lighting: Full-Sun

USDA Zone:

***Carex barbarae (cn)*****Basket (Santa Barbara) Sedge**

Clumping sedge with bright green blades and tufts of reddish-brown flowers. Good for containers. Used in basket weaving.

Regular moisture. Can be invasive. Grows 1-2' tall.

Habit: Bog

Bloom Color: red-brown

Lighting: Full-Sun

USDA Zone:

***Carex nudata (cn)*****Black Flowering (Naked) Sedge**

Bright green dense mounding sedge. Black flowers. Dies back in winter. Good for containers. CA native.

Can be partially submerged. Grows 1-2.5' tall. Keep moist.

Habit: Bog

Bloom Color: black

Lighting: Sun or filtered

USDA Zone:

***Carex obnupta (cn)*****Slough Sedge**

Grass-like foliage with wheat-like tops, flat dark green leaves. CA native.

Tall clumping grass-like plant grows in moist boggy conditions. Height 2'-3'.

Habit: Bog

Bloom Color:

Lighting: Full-Sun

USDA Zone:

***Carex pansa (cn)*****Dune Sedge**

Durable spreading sedge that can be used as a native lawn substitute. Curling dark green foliage. CA native.

Stays green with regular moisture. Grows to 6" tall.

Habit: Marginal

Bloom Color:

Lighting: Sun or filtered

USDA Zone:

***Carex tumulicola (cn)*****Foothill (Berkeley) Sedge**

Durable groundcover. Evergreen. Good for erosion control. CA native.

Prefers some shade. Grows to 12" tall.

Habit: Marginal

Bloom Color:

Lighting: Part-Sun

USDA Zone:

***Castanea dentata*****American Chestnut**

Rapidly growing deciduous hardwood tree with edible fruit. Endangered in historical range due to chestnut blight. This one is special!

Grows to 50-75' or more. Prefers moist, well-drained soil; tolerates drought.

Habit: Landscape

Bloom Color: yellow-white

Lighting: Full-Sun

USDA Zone: 4

Bee Friendly - no neonicotinoids

Free of synthetic sprays/fertilizers

Irrigated with 100% recycled water

***Ceratophyllum demersum (Syn. C. apiculatum)*****Hornwort**

Submerged, free floating, with numerous side shoots. Leaves in whorls along stems are bright green, used for spawning and protection of fry.

Stems reach lengths of 3-8'. Prefer warm water.

Habit: Floating

Bloom Color:

Lighting: Full-Sun

USDA Zone: 4

***Chondropetalum elephantinum*****Giant Cape Rush**

Dark green unbranched, segmented stems. Dark brown sheaths at joints. Clusters of brown flowers. Clumping. Male & female plants.

Grows to 4 ft. Origin South Africa. Prefers marsh habitat.

Habit: Marginal

Bloom Color:

Lighting:

USDA Zone:

***Colocasia esculenta*****Green Taro**

Large green heart-shaped leaves. Tuberous roots eaten like potatoes. More hardy than other varieties.

Semi-tropical. Prefers boggy conditions to shallow water. Enjoys humidity. Grows 3-5' tall.

Habit: Bog

Bloom Color:

Lighting: Sun or filtered

USDA Zone: 9

***Colocasia esculenta 'Black Magic'*****Black Taro**

Mature leaves are dusty purple-black on burgandy-black stalks. Can be used as a house plant. Frost tender.

Tropical. Can be submerged to 2". Enjoys humidity. Grows 3-5' tall.

Habit: Bog

Bloom Color:

Lighting: Sun or filtered

USDA Zone: 9

***Colocasia esculenta 'Fontanesii'*****Violet-Stem Taro**

Large, heart-shaped dark green leaves on purple-black stalk. Can be used as a houseplant.

Tropical. Can be submerged to 2". Grows 4-6' tall. Protect from frost. Enjoys humidity.

Habit: Bog

Bloom Color:

Lighting: Sun or filtered

USDA Zone: 9

***Colocasia esculenta 'Illustris'*****Imperial Taro**

Rare. Large, heart-shaped, violet-black leaves with green veins and margins. Velvet texture. Can be used as a house plant.

Tropical. Can be submerged to 2". Grows 3-5' tall. Protect from frost. Enjoys humidity.

Habit: Bog

Bloom Color:

Lighting: Sun or filtered

USDA Zone: 9

***Cornus glabrata (cn)*****Brown Creek Dogwood**

Deciduous riparian shrub, brown stems and green - brown - red leaves, with creamy white flowers. Good for birds. Deer resistant. CA native.

Grows 7-10' tall. Prefers moist soil, some shade. Good restoration plant. Do not submerge.

Habit: Marginal

Bloom Color: white

Lighting: Part-Sun

USDA Zone: 7

Bee Friendly - no neonicotinoids

Free of synthetic sprays/fertilizers

Irrigated with 100% recycled water

***Cornus sericea occidentalis (cn)*****Western Redtwig Dogwood**

Riparian shrub, forming broad clumps with red stems. Small white flower and fruit. Good for birds. CA native.

Grows 15-18' tall. Prefers wetland margins. Good restoration plant. Do not submerge.

Habit: Marginal      Bloom Color: white      Lighting: Sun or filtered      USDA Zone: 5

***Crataegus douglasii (cn)*****Black Hawthorne**

Bushy cold-weather shrub/tree. Coarse gray bark; red new growth. White flower clusters. Edible fruits. Good erosion control. CA native.

Grows to 32' tall. Nutrient rich soil. Can be used as hedge. Drought tolerant.

Habit: Marginal      Bloom Color: white      Lighting: Sun or filtered      USDA Zone: 4

***Cyperus alternifolius (syn. C. involucratus)*****Umbrella Palm**

Long strong stalks with fan of narrow leaves at the top. Clumping. Similar to papyrus. Can be grown in container.

Tall plant grows to 6'. Prefers very moist soil. Plant at water's edge.

Habit: Bog      Bloom Color:      Lighting: Sun or filtered      USDA Zone: 8

***Cyperus alternifolius 'Gracilis'*****Miniature Umbrella Palm**

Delicate narrow leaves which are arranged in a spiral shape on long stalks. Smallest variety of *C. alternifolius*. Good container plant.

Requires moist, boggy soil to 6" of water. Grows 1.5'-3' tall.

Habit: Bog      Bloom Color:      Lighting: Sun or filtered      USDA Zone:

***Cyperus eragrostis (cn) \******Tall Flatsedge**

Grows in seasonal creeks and wet areas. Can be invasive. CA native.

Grows to 3' tall. Prefers wet clay or gravel.

Habit: Bog      Bloom Color:      Lighting: Full-Sun      USDA Zone: 6

***Cyperus giganteus*****Mexican Papyrus**

Evergreen aquatic. Leafless green stems topped with umbrella of arched needle-like foliage and red-brown flowers.

Submerge to 12". Grows 8-10' tall.

Habit: Bog      Bloom Color:      Lighting: Full-Sun      USDA Zone:

***Cyperus isocladius (syn. C. prolifer)*****Dwarf Papyrus**

Delicate evergreen papyrus. Leafless thick stems end in tufts of greenish-brown flowers.

Submerge to 4". Grows to 1' tall.

Habit: Bog      Bloom Color:      Lighting: Sun or filtered      USDA Zone:

Bee Friendly - no neonicotinoids

Free of synthetic sprays/fertilizers

Irrigated with 100% recycled water

***Cyperus papyrus*****Giant Egyptian Papyrus**

Long thick stems bearing tufts of long slender leaves. Small brown spikelets of flowers.

Grows 7'-13' tall. Keep sheltered from wind. Rich moist soil. Frost sensitive.

Habit: Bog

Bloom Color:

Lighting: Full-Sun

USDA Zone: 3

***Cyperus percamenthus*****Little Giant Papyrus**

Dwarf size papyrus with large, thick stems. Large compact tassels. Grows 2'-3'. Vigorous grower.

Can be submerged to 12". More shade tolerant than Egyptian Papyrus.

Habit: Bog

Bloom Color:

Lighting: Sun or filtered

USDA Zone:

***Darmera peltata (cn)*****Indian Rhubarb**

Clumps of pink flower spikes. Broad, round leaves. Good for pond margins and marsh gardens.

Native to mountains of N. CA.

Grows 2'-4' tall. Prefers cooler location. Keep moist.

Habit: Marginal

Bloom Color: pink

Lighting: Part-Sun

USDA Zone: 5

***Echinodorus cordifolius (syn. E. radicans)*****Radican Sword**

Deep green elongated leaves with distinct lines when grown above water. Long stem of white flowers.

Can be fully submerged. Clumping. Grows 1'-3' in height.

Habit: Emerging

Bloom Color: white

Lighting: Sun or filtered

USDA Zone:

***Egeria densa*****Anacharis**

Floating stems covered with whorls of leaves. Tiny white flowers rise above water surface in full sun.

Stems are 1-2' long. Must be submerged. Can be invasive.

Habit: Floating

Bloom Color: white

Lighting: Full-Sun

USDA Zone:

***Eichhornia crassipes*****Water Hyacinth**

Orchid-like purple flower in summer. Free floating and good source of water filtration for ponds without filters.

Do not over fertilize. Keep from hard or brackish water. Prefers pH between 5.0-7.5.

Habit: Floating

Bloom Color: lavender

Lighting: Full-Sun

USDA Zone:

***Eleocharis macrostachya (cn)*****Common Spike Rush**

Perennial rush-like sedge found in moist habits. Bright green erect stems. Habitat plant. Good rain garden and border plant. CA native.

Grows to 3' tall. Keep moist. Salt tolerant. Can be slightly submerged.

Habit: Bog

Bloom Color:

Lighting: Full-Sun

USDA Zone:

Bee Friendly - no neonicotinoids

Free of synthetic sprays/fertilizers

Irrigated with 100% recycled water

***Eleocharis tuberosa syn dulcis*****Water Chestnut 'Hon Matai'**

Aquatic vegetable. Grass-like sedge with leafless green stems. Produces edible corms.

Grows in flooded, high nutrient soil. Dormant in winter.

Habit: Bog

Bloom Color:

Lighting: Sun or filtered

USDA Zone: 9

***Elymus glaucus (cn) (contract grow only)*****Blue Wildrye**

Species of wild rye forming upright clumps of blue-green blades. Good coastal plant. Deer resistant. Will stay green when watered. CA native.

Grows 1' tall. Flower stems grow at least 2' tall. Prefers light shade in heat. Tolerates drought.

Habit: Marginal

Bloom Color:

Lighting: Sun or filtered

USDA Zone: 4

***Epipactus gigantea 'Serpentine Night' (cn)*****Stream Orchid 'Serpentine Night'**

Dark burgandy leaves and stems. Flowers in spring. CA native.

Moist soil. Grows to 3' tall.

Habit: Bog

Bloom Color:

Lighting: Sun or filtered

USDA Zone:

***Epipactus gigantea (cn)*****Stream Orchid**

Dark green leaves and stems. Flowers in spring. CA native.

Moist soil. Grows to 3' tall.

Habit: Bog

Bloom Color:

Lighting: Sun or filtered

USDA Zone:

***Equisetum arvense (cn)*****Field Horsetail Rush**

Perennial fern with green hollow segmented stems. Sterile stems branch in regular whorls; fertile stems produce spores. Medicinal uses.

Grows 2-20" tall. Frost tolerant.

Habit: Bog

Bloom Color:

Lighting: Sun or filtered

USDA Zone: 2

***Equisetum hyemale (cn)*****Scouring Horsetail Rush**

Fern with dark green hollow segmented stems, turns orange in cooler weather. Cone shaped spores at tips of single stems. Native to CA.

Grows to 3'. Do not submerge crown. Can be invasive.

Habit: Bog

Bloom Color:

Lighting: Sun or filtered

USDA Zone: 4

***Equisetum hyemale v. robustum (cn)*****Giant Horsetail Rush**

Especially tall fern, dark green hollow segmented stems, turning orange in cooler weather. Cone-shaped spores at tips of stems. CA native.

Grows to 4' or more. Do not submerge crown. Can be invasive.

Habit: Bog

Bloom Color:

Lighting: Sun or filtered

USDA Zone: 4

Bee Friendly - no neonicotinoids

Free of synthetic sprays/fertilizers

Irrigated with 100% recycled water

***Equisetum laevigatum (cn)*****Smooth Horsetail Rush**

Perennial fern with bare green tubular stalk, tipped with brown cone. Dark bands up stalk with few branches. CA native.

Keep moist. Grows to 6' tall, but usually 2-3'.

Habit: Bog

Bloom Color:

Lighting: Full-Sun

USDA Zone:

***Equisetum scirpoides*****Miniature Horsetail Rush**

Miniature version of common Horsetail. Evergreen and clumping. Thin bamboo-like stems with black rings at nodes.

Grows to 8" height. Clumping. Medium water needs. Can be submerged to 2" depth.

Habit: Marginal

Bloom Color:

Lighting: Sun or filtered

USDA Zone: 4

***Equisetum telmateia (cn)*****Great Horsetail**

Perennial fern with green hollow segmented stems. Sterile stems branch in regular whorls; fertile stems produce spores. Subspecies native to CA.

Forms colonies. Prefers damp shady area. Can be invasive.

Habit: Bog

Bloom Color:

Lighting: Sun or filtered

USDA Zone:

***Fraxinus latifolia (cn)*****Oregon Ash**

Medium-sized deciduous tree, symmetrical in shape, with olive green leaves and gray-green to brown bark. Leaves vivid yellow in fall.

Prefers damp, loose soil and occasional flooding. Full sun to part shade. 35-80' tall.

Habit: Marginal

Bloom Color:

Lighting: Sun or filtered

USDA Zone:

***Gambusia affinis*****Complimentary Bag of Mosquito Fish**

Habit: Floating

Bloom Color:

Lighting:

USDA Zone:

***Glyceria maxima variegata*****Variegated Manna Grass**

Grassy plant. Pink tinged wheat and green colored variegated leaves.

Grows to 2' tall. Evergreen. Prefers moist soil to submersion.

Habit: Emerging

Bloom Color:

Lighting: Full-Sun

USDA Zone:

***Grindelia stricta (cn)*****Salt Marsh Gumweed**

Erect perennial or subshrub with bright yellow flowers. Easy to grow and vigorous. Attracts butterflies. CA native.

Grows to 3' tall. Tolerates seasonal flooding, salt. Deer resistant.

Habit: Marginal

Bloom Color: yellow

Lighting: Sun or filtered

USDA Zone: 7a



Bee Friendly - no neonicotinoids

Free of synthetic sprays/fertilizers

Irrigated with 100% recycled water

***Gunnera manicata*****Gunnera**

One of largest herbaceous perennials in the world. Huge leaves, thick thorny stems. Rusty red miniscule flowers grow on conical branch. Prehistoric.

Prefers boggy area. Do not submerge. Grows to 7' tall. Protect from frost.

Habit: Marginal

Bloom Color:

Lighting: Part-Sun

USDA Zone: 7

***Hedychium coronarium*****White Butterfly Ginger**

Semi-tropical hardy ginger. Sweetly scented, white, butterfly-shaped flower in late summer.

Well-drained soil.

Moist soil. Grows 5-6' tall. Prefers cool sun or light shade. Evergreen in frost-free garden.

Habit: Marginal

Bloom Color: white

Lighting: Part-Sun

USDA Zone: 7

***Hedychium gardnerianum*****Kahili Ginger**

Small fragrant yellow flowers with red stamens. Leaves grow to 2' long and 6" wide. N. India

Himalaya native. Well-drained soil.

Moist soil. Grows 6-8' tall. Prefers cool sun or light shade. Evergreen in frost-free garden.

Habit: Marginal

Bloom Color: yellow

Lighting: Sun or filtered

USDA Zone: 7

***Hedychium gardnerianum 'Pink'*****Pink Ginger**

Semi-tropical hardy ginger with blue-green stems and fragrant pink flowers. Native to Nepal.

Well-drained soil.

Moist soil. Grows 6-8' tall. Prefers cool sun or light shade. Evergreen in frost-free garden.

Habit: Marginal

Bloom Color: pink

Lighting: Part-Sun

USDA Zone: 7

***Hedychium gardnerianum 'Tara'*****Tara Ginger**

Semi-tropical hardy ginger with blue-green stems and fragrant orange-red flowers. Native to

Nepal. Well-drained soil.

Moist soil. Grows 6-8' tall. Prefers cool sun or light shade. Evergreen in frost-free garden.

Habit: Marginal

Bloom Color: orange

Lighting: Part-Sun

USDA Zone: 7

***Hedychium 'Kinkaku'*****Kinkaku Ginger**

Old Japanese hybrid with light pink fragrant flowers, narrow leaves. Flowers late summer. Semi tropical hardy. Well drained soil.

Moist soil. Grows 4-5' tall. Prefers cool sun or light shade. Evergreen in frost-free garden.

Habit: Marginal

Bloom Color: coral

Lighting: Sun or filtered

USDA Zone: 7

***Helenium autumnale (cn)*****Common Sneezeweed**

Large bright yellow daisies on 2-3 ft. stems. Lance-shaped green leaves. Attracts pollinators.

Does not cause hayfever! CA native.

Keep moist. Grows 2-3' tall.

Habit: Bog

Bloom Color: yellow

Lighting: Sun or filtered

USDA Zone:

Bee Friendly - no neonicotinoids

Free of synthetic sprays/fertilizers

Irrigated with 100% recycled water

***Helenium bigelovii* (cn)****Bigelow's Sneezeweed**

Golden daisy like flowers, round dome center on 2-3 ft. stems. Lance-shaped green leaves.

Attracts pollinators. Does not cause hayfever! CA native.

Keep moist. Grows 2-3' tall.

Habit: Bog

Bloom Color: yellow

Lighting: Sun or filtered

USDA Zone:

***Helenium puberulum* (cn)****Rosilla Sneezeweed**

Golden very small petals which quickly disappear to leave spherical center. Attracts pollinators.

Does not cause hayfever! CA native.

Keep moist. Grows 2-3' tall.

Habit: Bog

Bloom Color: yellow

Lighting: Sun or filtered

USDA Zone:

***Hibiscus californicus* syn. *Lasiocarpus*  
(cn)****California Hibiscus**

Wetland hibiscus native to Sacramento River Delta. Fuzzy green leaves and broad white flowers.

Dormant in winter. Rare CA native.

Grows 3' tall. Prefers part shade and moist soil. Tolerates clay.

Habit: Bog

Bloom Color: white

Lighting: Part-Sun

USDA Zone: 4

***Hibiscus coccineus*****Scarlet Rose Mallow 'Texas Star'**

Hardy hibiscus variety native to marshes. Scarlet star-shaped flower.

Moist soil. Grows in warm weather. Dies back in winter. Grows 7-10'.

Habit: Bog

Bloom Color: red

Lighting: Full-Sun

USDA Zone:

***Hibiscus laevis*****Halberdleaf Rose Mallow**

Hardy hibiscus variety native to central and eastern North America. Large pink flower with maroon center. Attracts butterflies.

Moist, marsh soil. Grows in warm weather. Dies back in winter. Grows 3-6'. Flowers July-Oct.

Habit: Bog

Bloom Color: pink

Lighting: Full-Sun

USDA Zone:

***Hibiscus moscheutos* 'Dark Pink'****Dark Pink Moscheutos Rose Mallow  
(young plants)**

Hardy wetland hibiscus with very large dark pink flower. Multi-stemmed and shrub-like.

Moist soil. Grows in warm weather. Dies back in winter. Grows 7-10'.

Habit: Bog

Bloom Color: dark pink

Lighting: Full-Sun

USDA Zone:

***Hibiscus moscheutos* 'Red'****Red Moscheutos Rose Mallow**

Hardy wetland hibiscus with very large red flower. Multi-stemmed and shrub-like.

Moist soil. Grows in warm weather. Dies back in winter. Grows 7-10'.

Habit: Bog

Bloom Color: dark red

Lighting: Full-Sun

USDA Zone:

Bee Friendly - no neonicotinoids

Free of synthetic sprays/fertilizers

Irrigated with 100% recycled water

***Hibiscus moscheutos* 'Shell Pink'****Shell Pink Moscheutos Rose Mallow**

Hardy wetland hibiscus with very large light pink flower. Multi-stemmed and shrub-like.

Moist soil. Grows in warm weather. Dies back in winter. Grows 7-10'.

Habit: Bog

Bloom Color: white

Lighting: Full-Sun

USDA Zone:

***Hippuris vulgaris* (cn)****Mare's Tail**

Creeping perennial herb that roots underwater. Narrow pine-tree like foliage grows above water surface. Ideal as oxygenator.

Can be submerged to 12". Grows to height of 24" above water surface.

Habit: Emerging

Bloom Color:

Lighting: Sun or filtered

USDA Zone: 4

***Hosta fortunei* 'Silver Crown'****Silver Crown Hosta Lily**

Dark green leaves with creamy white border. Lavender flowers. Good for pond side. Fast growing.

Moist soil, shady location. Grows 2' tall. Dormant in winter. Susceptible to snail damage.

Habit: Marginal

Bloom Color: lavender

Lighting: Shade

USDA Zone:

***Hosta* 'Lemon Lime'****Lemon Lime Hosta Lily**

Fast growing, compact, smaller hosta with lemon-lime leaves. Lavender flower. Good for edging along walkways in pond area.

Prefers moist soil and shady location. Grows 6" in height. Dormant in winter.

Habit: Marginal

Bloom Color: lavender

Lighting: Shade

USDA Zone:

***Hosta seiboldiana* 'Elegans'****Hosta Lily "Elegans"**

Large, waxy blue-green foliage with pale lavender flowers. Good for pond side.

Moist soil, shady location. Grows 2-3' tall. Dormant in winter. Susceptible to snail damage.

Habit: Marginal

Bloom Color: lavender

Lighting: Shade

USDA Zone:

***Hosta* sp.****Variegated Dwarf Hosta Lily**

Yellow edged with green center. Small in size. Lavender flowers. Good container plant.

Prefers moist soil and shady location. Grows 6" in height. Dormant in winter.

Habit: Marginal

Bloom Color: lavender

Lighting: Shade

USDA Zone:

***Hosta* sp.****Wide Brim Hosta Lily**

Light green leaves edged with yellow-green. Small in size. Lavender flowers. Good container plant.

Moist soil, shady location. Grows 2-3' tall. Dormant in winter. Susceptible to snail damage.

Habit: Marginal

Bloom Color: lavender

Lighting: Shade

USDA Zone:

Bee Friendly - no neonicotinoids

Free of synthetic sprays/fertilizers

Irrigated with 100% recycled water

***Houttuynia cordata*****Green Chameleon Plant**

Groundcover with heart-shaped leaves, light to dark green. White flowers in the summer.

Softens pond edges. Forms dense mat.

Likes damp areas, not submersion. Prefers semi-shade. Height 6"-9".

Habit: Bog

Bloom Color: white

Lighting: Sun or filtered

USDA Zone: 5

***Houttuynia cordata 'Chamaeleon'*****Variegated Chameleon Plant**

Groundcover with colorful yellow, green, and red heart shaped leaves, white flowers in the summer. Softens pond edges.

Likes damp areas, not submersion. Shade or sun, but more colorful in sun. Height 6"-9".

Habit: Bog

Bloom Color: white

Lighting: Sun or filtered

USDA Zone: 2

***Hydrocleys nymphoides*****Water Poppy**

Small oval green leaf with yellow poppy flower. Good for small ponds or shading the water.

Blooms all summer.

Must be submerged 6"-2' depth.

Habit: Submerged

Bloom Color: yellow

Lighting: Sun or filtered

USDA Zone: 7

***Hydrocotyle ranunculoides (cn)*****Floating Marsh Pennywort**

Bright green aromatic marsh plant. Long creeping stems form dense mats. Shiny, leathery round leaves. Used as a Chinese herb. CA native.

Grows in swampy areas or on water surface. 2-6" above water surface. Can be submerged.

Habit: Bog

Bloom Color:

Lighting: Sun or filtered

USDA Zone:

***Hydrocotyle sibthorpioides*****Dwarf Green Pennywort**

Small species with creeping stems and small round green leaves. Keep from snails.

Grows in relative dryness to full submergence. Requires intensive lighting. 2"-3" height.

Habit: Bog

Bloom Color:

Lighting: Full-Sun

USDA Zone:

***Hydrocotyle sibthorpioides 'Crystal Confetti'*****Dwarf Variegated Pennywort**

Small green leaves with cream-white margins. Creates carpet groundcover.

Low growing plants to 2" tall. Grows at pond edge.

Habit: Bog

Bloom Color:

Lighting: Sun or filtered

USDA Zone:

***Hydrocotyle verticillata (cn)*****Umbrella Pennywort**

Creeping plant with round, deep green, umbrella-like foliage and umbel of white flowers.

Boggy moist soil to full submersion. Grows 2-3" in height.

Habit: Bog

Bloom Color:

Lighting: Sun or filtered

USDA Zone:

Bee Friendly - no neonicotinoids

Free of synthetic sprays/fertilizers

Irrigated with 100% recycled water

***Hygrophila difformis*****Water Wisteria**

Mint-like leaves with small lavender flowers. Long trailing stems. Leaves more fern-like when submerged.

Good for hiding pots in pond or to grow in container. Moist soil to 2" deep. Can be submerged.

Habit: Bog

Bloom Color: purple

Lighting: Sun or filtered

USDA Zone:

***Hymenocallis lirisme*****Spider Lily**

Amazing white star flower that blooms suddenly then disappears. Foliage looks similar to sagittaria - long narrow leaves. U.S. native.

Moist soil. Grows 2-3' tall.

Habit: Bog

Bloom Color: white

Lighting: Sun or filtered

USDA Zone:

***Iris ensata 'Anytus'*****Anytus Japanese Iris**

Beardless perennial iris that prefers wet, acidic soil. Ivory white flowers. Very striking. Plant at water edge.

Keep moist. Prefers rich, slightly acidic soil. Grows to 2-4' tall. Keep crown above water line.

Habit: Marginal

Bloom Color: white

Lighting: Full-Sun

USDA Zone: 4

***Iris ensata 'Coho'*****Coho Japanese Iris**

Early blooming beardless perennial iris with three falls, 1-2 branches, 5-7 buds. Pink flowers, sword-like foliage. Plant at water edge.

Keep moist. Prefers rich, slightly acidic soil. Grows to 38" tall. Keep crown above water line.

Habit: Marginal

Bloom Color: pink

Lighting: Full-Sun

USDA Zone: 4

***Iris ensata 'Rose Queen'*****Rose Queen Japanese Iris**

Beardless perennial iris that prefers wet, acidic soil. Rose-pink flowers with darker veins and yellow-green signals. Plant at water edge.

Keep moist. Prefers rich, slightly acidic soil. Grows to 2-3' tall. Keep crown above water line.

Habit: Marginal

Bloom Color: pink

Lighting: Full-Sun

USDA Zone: 4

***Iris ensata sp.*****Lavender-Blue & White Japanese Iris**

Beardless perennial iris that prefers wet, acidic soil. Light blue-lavender flower with sword-like foliage. Plant at water edge.

Keep moist. Prefers rich, slightly acidic soil. Grows to 2-4' tall. Keep crown above water line.

Habit: Marginal

Bloom Color: blue-lavender,

Lighting: Full-Sun

USDA Zone: 4

***Iris ensata sp.*****Lavender-Pink & White Japanese Iris**

Beardless perennial iris that prefers wet, acidic soil. Light pink-lavender flower with sword-like foliage. Plant at water edge.

Keep moist. Prefers rich, slightly acidic soil. Grows to 2-4' tall. Keep crown above water line.

Habit: Marginal

Bloom Color: pink-lavender,

Lighting: Full-Sun

USDA Zone: 4

Bee Friendly - no neonicotinoids

Free of synthetic sprays/fertilizers

Irrigated with 100% recycled water

***Iris ensata* sp.****Purple & White Japanese Iris**

Beardless perennial iris that prefers wet, acidic soil. Purple and white petals with sword-like foliage. Plant at water edge.

Keep moist. Prefers rich, slightly acidic soil. Grows to 2-4' tall. Keep crown above water line.

Habit: Marginal      Bloom Color: purple & white      Lighting: Full-Sun      USDA Zone: 4

***Iris ensata* sp.****Dark Purple Japanese Iris**

Beardless perennial iris that prefers wet, acidic soil. Purple flower with sword-like foliage. Plant at water edge.

Keep moist. Prefers rich, slightly acidic soil. Grows to 2-4' tall. Keep crown above water line.

Habit: Marginal      Bloom Color: dark purple, bl      Lighting: Full-Sun      USDA Zone: 4

***Iris giganticaerulea alba*****Her Highness Louisiana Iris**

Sword like foliage with white flowers, yellow centers. Multiple blooms. Aquatic native to N. Am.

Prefers moist soil. Grows 2'-3' height. Can be submerged 4-6".

Habit: Bog      Bloom Color: white      Lighting: Full-Sun      USDA Zone: 5

***Iris laevigata* 'Variegata'****Variegated Japanese Water Iris**

Kakitsubata iris. Beardless perennial iris that prefers shallow water. Variegated foliage with purple flower. Flowers for months.

Keep moist. Prefers rich, slightly acidic soil. Grows to 2-4' tall. Can be submerged to 3".

Habit: Bog      Bloom Color: blue      Lighting: Full-Sun      USDA Zone: 4

***Iris longipetala* (cn)****Coast Iris**

Uncommon CA native restricted to swales and moist areas in coastal grasslands from San Francisco to Monterey. Bluish-green leaves. CA native.

Prefers moist soil. Clumping, Grows 20' tall.

Habit: Bog      Bloom Color: lavender-blue      Lighting: Sun or filtered      USDA Zone: 3

***Iris louisiana* 'Ann Chowning'****Ann Chowning Louisiana Iris**

Beautiful maroon red flowers, with yellow markings in center. Multiple blooms. Aquatic native to N. Am.

Prefers moist soil. Grows 2'-3' height. Can be submerged 4-6".

Habit: Bog      Bloom Color: maroon      Lighting: Full-Sun      USDA Zone: 5

***Iris louisiana* 'Beale Street'****Beale Street Louisiana Iris**

Ruffled dark blue flower with dark veins and pale yellow signals. 5-6 buds per stalk. Aquatic native to N. Am.

Prefers moist soil. Grows 40-44" height. Can be submerged 4-6".

Habit: Bog      Bloom Color: blue      Lighting: Full-Sun      USDA Zone: 5

Bee Friendly - no neonicotinoids

Free of synthetic sprays/fertilizers

Irrigated with 100% recycled water

***Iris louisiana 'Black Gamecock'*****Black Gamecock Louisiana Iris**

Dark purple-black, velvety flowers. Golden marking in center. Aquatic native to N. Am.

Prefers moist soil. Grows 1.5'-3' height. Can be submerged 4-6".

Habit: Bog      Bloom Color: deep purple      Lighting: Full-Sun      USDA Zone: 5

***Iris louisiana 'Broad Daylight'*****Broad Daylight Louisiana Iris**

Early blooming with broad rich-yellow flowers, gold signals, and lighter yellow standards.

Aquatic native to N. Am.

Prefers moist soil. Grows 2-3.5' height. Can be submerged 4-6".

Habit: Bog      Bloom Color: yellow      Lighting: Full-Sun      USDA Zone: 5

***Iris louisiana 'Colorific'*****Colorific Louisiana Iris**

Bi-color with both bright lavender and white petals, yellow centers. Aquatic native to N. Am.

Prefers moist soil. Grows 2'-3' height. Can be submerged 4-6".

Habit: Bog      Bloom Color: purple & white      Lighting: Full-Sun      USDA Zone: 5

***Iris louisiana 'Handmaiden'*****Handmaiden Louisiana Iris**

Dark pink petals with bright yellow veins and center. Aquatic native to N. Am.

Prefers moist soil. Grows 2'-3' height. Can be submerged 4-6".

Habit: Bog      Bloom Color: maroon & gold      Lighting: Full-Sun      USDA Zone: 5

***Iris louisiana 'Honey Jumble'*****Honey Jumble Louisiana Iris**

Spanish orange with ruffled petals, darker veins, yellow signal. Aquatic native to N. Am.

Prefers moist soil. Grows 40" height. Can be submerged 4-6".

Habit: Bog      Bloom Color: orange      Lighting: Full-Sun      USDA Zone: 5

***Iris louisiana 'Purple Knockout'*****Purple Knockout Louisiana Iris**

Sword like foliage with intense purple flowers, yellow centers. Multiple blooms. Aquatic native to N. Am.

Prefers moist soil. Grows 2'-3' height. Can be submerged 4-6".

Habit: Bog      Bloom Color: purple      Lighting: Full-Sun      USDA Zone: 5

***Iris pseudacorus 'Dwarf'*****Dwarf Yellow Flag Iris**

A smaller water iris with yellow flower and narrow leaves.

Moist soil. Grows 1-2' tall.

Habit: Bog      Bloom Color: yellow      Lighting: Full-Sun      USDA Zone:

Bee Friendly - no neonicotinoids

Free of synthetic sprays/fertilizers

Irrigated with 100% recycled water

***Iris pseudata 'Kurokawa-noh'*****Kurokawa-noh Iris**

Striking mulberry red eye pattern on light rose falls; purple styles. Hybrid I. pseudacorus and I. ensata. 3-4 branches, 10-16 buds.

Moist soil. Can be submerged. Grows 3-5' tall. Frost hardy non-invasive (sterile).

Habit: Bog

Bloom Color: burgandy

Lighting: Full-Sun

USDA Zone: 4

***Iris sibirica 'Roryu'*****Siberian Iris 'Roryu'**

Beardless perennial iris that prefers moist soil. Antique yellow flowers with red veins. Plant at water's edge.

Keep moist. Keep crown above water line. Grows to 40-43" tall.

Habit: Marginal

Bloom Color: antique yellow

Lighting: Full-Sun

USDA Zone: 4

***Iris versicolor 'Mysterious Monique'*****Mysterious Monique Iris**

Velvety royal purple with white veins and yellow accents. Tall stems.

Grows 30" tall. Keep moist. Can be submerged to 4". Rhizome is toxic.

Habit: Bog

Bloom Color: purple

Lighting: Sun or filtered

USDA Zone: 3

***Iris versicolor sp.*****Harlequin Blue Flag Iris**

Beautiful wide leaf with tints of blue. Deep lavender flower, blooms late spring and summer. Thrives in wetland habitats. Clumping.

Grows 2'-3' tall. Keep moist, tolerates drought. Can be submerged to 4". Rhizome is toxic.

Habit: Bog

Bloom Color: deep blue

Lighting: Sun or filtered

USDA Zone: 3

***Juncus 'Carman's Japan' (cn)*****Carman's Japanese Rush**

Clumping evergreen rush with graceful, narrow stems. Golden brown seed tufts appear in summer.

Grows to 18" height. Moist soil or submerged to 3" over top of pot.

Habit: Bog

Bloom Color:

Lighting: Full-Sun

USDA Zone: 4

***Juncus effusus (cn)*****Soft Rush**

Dark green foliage with seedy flower clumps in spring. Evergreen with round stems & brown flowers in summer. Drought tolerant.

Grows 2'-3' tall. Keep soil moist. Clumping.

Habit: Bog

Bloom Color:

Lighting: Sun or filtered

USDA Zone:

***Juncus inflexus 'Afro'*****Blue Medusa Rush**

Corkscrew rush with tightly twisting and spiraling leaves. Powdery blue-green in color. Tolerates drought.

Clumping. Moist soil to 3" submersion. Grows 12-18" tall, 2' wide. Tolerates cooler temp & droug

Habit: Bog

Bloom Color: brown

Lighting: Sun or filtered

USDA Zone:



Bee Friendly - no neonicotinoids

Free of synthetic sprays/fertilizers

Irrigated with 100% recycled water

***Juncus inflexus* 'Unicorn'****Unicorn Corkscrew Rush**

Corkscrew rush with long twisting and spiraling leaves.

Clumping. Moist soil to 3" submersion. Grows 12-18" tall, 2' wide. Tolerates cooler temperatures

Habit: Bog

Bloom Color: brown

Lighting: Sun or filtered

USDA Zone:

***Juncus lescurii* (cn)****Salt Rush**

Dark green stemmed rush, grows in freshwater and salt marshes and near sand dunes. Can be found in clumps or single stems. CA native.

Grows 2'-3' tall. Keep soil moist. Clumping.

Habit: Bog

Bloom Color:

Lighting: Full-Sun

USDA Zone:

***Juncus patens* (cn)****California Gray Rush**

Evergreen with blue-grey spines and brown seedy flower. Clumping. Native to U.S. west coast.

Clumping.

Tolerates most conditions. Can be submerged to 4". Sun for flowering. Height 18"-30".

Habit: Bog

Bloom Color:

Lighting: Sun or filtered

USDA Zone:

***Juncus patens* 'Elk Blue' (cn)****Elk Blue California Gray Rush**

Evergreen with blue-grey spines and brown seedy flower. Clumping. Native to U.S. west coast.

Clumping.

Tolerates most conditions. Can be submerged to 4". Sun for flowering. Height 12-18".

Habit: Bog

Bloom Color:

Lighting: Sun or filtered

USDA Zone:

***Juncus xiphioides* (cn)****Irisleaf Rush**

Interesting sculptured rush with wide blades and flowers clumps appearing like iris blooms. CA native.

Keep moist. Grows to 2' tall.

Habit: Bog

Bloom Color:

Lighting: Full-Sun

USDA Zone:

***Lemna minor* (cn)****Duckweed**

Floating aquatic plant -one of the smallest of all flowering plants! Forms carpet of green on water surface. Good food source for wildlife. CA native.

Must be in water at all times.

Habit: Floating

Bloom Color:

Lighting: Full-Sun

USDA Zone:

***Limonium californica* (cn)****Western Marsh Rosemary**

Also called Sea Lavender. Thick woody base, wide leaves, and pale-lavender flowers on vertical stalks. CA native.

Tolerates salt, alkaline, and poor drainage conditions. Keep moist. Grows to 1/2' tall.

Habit: Bog

Bloom Color:

Lighting: Full-Sun

USDA Zone:

Bee Friendly - no neonicotinoids

Free of synthetic sprays/fertilizers

Irrigated with 100% recycled water

***Lindernia grandiflora*****Blue Moneywort (3.5" pot)**

Creeping ground cover. Succulent heart-shaped small leaves, tiny violet-blue flowers with white markings. Native Southeast U.S. Good in containers.

Prefers moist soil but tolerates some dryness. 2-3" tall. Hardy. Evergreen in frost free climates.

Habit: Bog

Bloom Color: blue

Lighting: Sun or filtered

USDA Zone:

***Lobelia cardinalis (cn)*****Cardinal Lobelia**

Tall purple-red stems and burgandy leaves with bright red flowers at top. CA native.

Can be submerged. Grows to height of 2'-3'. Prefers very moist conditions.

Habit: Marginal

Bloom Color: red

Lighting: Sun or filtered

USDA Zone: 3

***Lobelia dunnii serratta (cn)*****Wild Blue Lobelia 'Serratta'**

Delicate leaves and lavender blue flowers. Attracts pollinators. Groundcover. CA native.

Must be wet at all times. Winter dormant. Grows to 1' tall.

Habit: Marginal

Bloom Color:

Lighting: Shade

USDA Zone: 6

***Lobelia laxiflora*****Mexican Lobelia**

Bright-colored lobelia that endures both bog and fairly drought conditions. Nearly ever blooming in coastal areas. Deer resistant.

Grows to 2' tall. Prefers moist soil. Cut back annually.

Habit: Marginal

Bloom Color: orange &amp; red

Lighting: Full-Sun

USDA Zone: 9

***Lobelia siphilitica*****Blue Lobelia**

Green foliage, deep blue flower. Used by Iroquois as herb. Attracts bumblebees.

Grows vertically 1'-4' in height. Moist soil.

Habit: Marginal

Bloom Color: blue

Lighting: Part-Sun

USDA Zone: 3

***Lobelia siphilitica alba*****White Lobelia**

Short-lived perennial that forms rosettes of new plants from the base. Does well in ditches & streams. Attracts butterflies.

Moist soil. Do not submerge. Will self sow. Do not mulch.

Habit: Marginal

Bloom Color: white

Lighting: Full-Sun

USDA Zone: 3

***Lupinus polyphyllus ssp. superbis*****Streamside Lupine**

Moisture loving lupine with variable growth habit. Showy white-pink to purplish-blue flowers. CA native.

Prefers moist habitats, cool temp, and seasonally wet soils, but will tolerate seasonal dryness.

Habit: Marginal

Bloom Color: pink or blue

Lighting: Sun or filtered

USDA Zone: 4

Bee Friendly - no neonicotinoids

Free of synthetic sprays/fertilizers

Irrigated with 100% recycled water

***Lysimachia cilata 'Purpurea'*****Brown Loosestrife**

Deep purple leaves in early spring, turning purple-green later in season. Yellow starry flowers along stem.

Prefers shallow water or damp areas. Grows to 3' tall.

Habit: Bog

Bloom Color: yellow

Lighting: Full-Sun

USDA Zone:

***Lysimachia nummularia*****Green Creeping Jenny**

Creeping, low-growing with round, bright lime-green leaves. Excellent plant for spilling over walls and waterfall area.

Prefers shallow water or damp areas. 2-3 inches tall.

Habit: Bog

Bloom Color: yellow

Lighting: Sun or filtered

USDA Zone:

***Lysimachia nummularia 'Aurea'*****Golden Creeping Jenny**

Creeping, low-growing with round, bright green leaves. Excellent plant for spilling over walls and waterfall area. Deer resistant.

Prefers shallow water or damp areas. 2-4" tall, 2-3' wide.

Habit: Bog

Bloom Color: yellow

Lighting: Sun or filtered

USDA Zone: 4

***Lysimachia punctata*****Golden Candles**

Upright stems covered with green small round leaves. Bright yellow flowers grow at base of leaves in summer.

Grows 18-24" height. Dormant in winter. Moist soil.

Habit: Bog

Bloom Color: yellow

Lighting: Sun or filtered

USDA Zone:

***Lysimachia punctata 'Alexander'*****Variegated Golden Candles**

Upright stems covered with white, pink, and green small round leaves. Bright yellow flowers grow at base of leaves in summer.

Grows 18-24" height. Dormant in winter. Moist soil.

Habit: Bog

Bloom Color: yellow

Lighting: Sun or filtered

USDA Zone:

***Marsilea minuta*****Miniature Water Clover**

Tiny four-leaf clover 1/4 inch leaves. Good for rock gardens and splash areas.

Prefers saturated soil to very shallow water. Leaves cannot be submerged. Height less than 2".

Habit: Bog

Bloom Color:

Lighting: Sun or filtered

USDA Zone:

***Marsilea mutica\******Four Leaf Water Clover (Rainbow Nardoo)**

Four-leaf aquatic clover with green, red-brown patterns. Leaves float on surface of water and rise slightly above. Can be invasive.

Plant 4"-9" below water surface. Prefers rich soil. Cold Hardy.

Habit: Bog

Bloom Color:

Lighting: Sun or filtered

USDA Zone: 6

Bee Friendly - no neonicotinoids

Free of synthetic sprays/fertilizers

Irrigated with 100% recycled water

***Marsilea quadrifolia*****Upright Four-Leaf Water Clover**

Four-leaf clover-like leaves that grow above water surface. Perennial. Bright green leaves.

Must be partly submerged. Tolerates shade.

Habit: Bog

Bloom Color:

Lighting: Sun or filtered

USDA Zone:

***Mentha aquatica*****Water Mint**

Ornamental aquatic mint with pale lavender flowers, bright green leaves. Aromatic and edible.

Moist soil to 4" below water surface. Low growing, sprawling. Frost tolerant.

Habit: Bog

Bloom Color: blue

Lighting: Sun or filtered

USDA Zone: 2

***Mentha spicata*****Kentucky Colonel Spearmint**

Fragrant edible herb with crinkly bright green leaves. Easy to start from cuttings. Aromatic.

Grows in clumps at water edge. Height 1-2 ft.

Habit: Marginal

Bloom Color: white

Lighting: Sun or filtered

USDA Zone:

***Menthus minima*****Miniature Water Mint (3.5" pot)**

Delightful fragrant creeper with small, flat, oblong leaves. Grows in dense mat. Hardy.

Must be wet at all times. Grows at surface of water. 2" height and will trail over edges.

Habit: Bog

Bloom Color:

Lighting: Full-Sun

USDA Zone:

***Menyanthes trifoliata (cn)*****Bog Bean (Buckbean)**

Flowers stalks and leaves rise above water surface. Creeping rhizomes form colonies at pond edge. Star-shaped, hairy 5-petaled white flowers.

Prefers acidic, peaty soil. Grows to 12" tall. Submerge to 3".

Habit: Emerging

Bloom Color: white

Lighting: Sun or filtered

USDA Zone: 3

***Mimulus aurantiacus (cn)*****Sticky Monkey Flower**

Cheerful blossoms of orange tubular flowers. Good nectar plant. Grown as shrub. CA native.

Tolerates drought and wet soils. Grows 2-3' tall. Requires good drainage.

Habit: Landscape

Bloom Color: orange

Lighting: Sun or filtered

USDA Zone:

***Mimulus cardinalis (cn)*****Cardinal Monkeyflower**

Robust perennial tubular red flowers attract hummingbirds and other pollinators. CA native.

Keep moist. Grows to 2' tall and wide.

Habit: Marginal

Bloom Color: red

Lighting: Sun or filtered

USDA Zone:

Bee Friendly - no neonicotinoids

Free of synthetic sprays/fertilizers

Irrigated with 100% recycled water

***Mimulus guttatus (cn)*****Seep Monkey Flower**

Perennial wildflower growing along streams. Long, tubular bright yellow flowers.

Fast growing. Wetland plant.

Habit: Bog

Bloom Color: yellow

Lighting: Sun or filtered

USDA Zone: 6

***Myosotis scorpioides (syn. Myosotis palustris)*****Water Forget Me Not**

Dainty blue flowers with yellow centers. Light green foliage. Spreads rapidly. Hardy.

Keep moist. Do not submerge. 12"-24" tall. Filtered sun.

Habit: Bog

Bloom Color:

Lighting: Part-Sun

USDA Zone:

***Myriophyllum aquaticum\******Parrot's Feather**

Fern-like feathery foliage. Good for small ponds for texture and as oxygenator. Can be invasive - do not release in wild. Tolerates brackish water.

Invasive. Grows quickly. Height 3-8" above water. Must be in water at all times. Trim often.

Habit: Emerging

Bloom Color:

Lighting: Full-Sun

USDA Zone: 6

***Myriophyllum brasiliensis 'red stem'\******Dwarf Red-Stem Parrot's Feather**

Delicate fern-like feathery foliage with red stems. Good for small ponds for texture and as oxygenator. Can be invasive - do not release in wild.

Slower growing than M.aquaticum. Height 3-6" above water. Must be in water at all times.

Habit: Emerging

Bloom Color:

Lighting: Full-Sun

USDA Zone: 6

***Myriophyllum pinnatum*****Brown Foxtail**

Feathery plant with strong stems. Leaves clustered with brown and orange tones. Can serve as oxygenator when submerged.

Keep moist at all times. Can be submerged 1-2'. Overflows from pond. Tolerates brackish water.

Habit: Emerging

Bloom Color:

Lighting: Full-Sun

USDA Zone: 4

***Nasturtium officinale (cn)*****Water Cress**

Fast growing aquatic or semi-aquatic herb. Edible.

Keep moist. Can be partially submerged or used as ground cover.

Habit: Floating

Bloom Color: white

Lighting: Sun or filtered

USDA Zone: 3

***Nelumbo nucifera 'Chawan Basu'*****Chawan Basu Lotus**

Small lotus with single pink blooms that fade to white. Small, compact, with pointed petals.

Good for containers.

Keep tubers below water surface. 2-3' height. Submerge 3"-2ft. Rich soil. Dormant in winter.

Habit: Submerged

Bloom Color: white, pink

Lighting: Full-Sun

USDA Zone: 4

Bee Friendly - no neonicotinoids

Free of synthetic sprays/fertilizers

Irrigated with 100% recycled water

***Nelumbo nucifera* 'Mrs. Perry Slocum'****Mrs. Perry Slocum Lotus**

Medium sized hardy lotus with changeable blooms from pink, creamy yellow, to crimson blush.

Large leaves. Flowers stand above water surface.

Keep tubers below water surface. 2-3' height. Submerge 3"-2ft. Rich soil. Dormant in winter.

Habit: Submerged Bloom Color: apricot-yellow Lighting: Full-Sun USDA Zone: 5

***Nelumbo nucifera* sp****Evening Showers Lotus**

Small hardy lotus. Simple, elegant blooms, start pink and become light yellow with pink tips.

Heavy bloomer.

Keep tubers below water surface. Small plant. Submerge 3"-2ft. Rich soil. Dormant in winter.

Habit: Submerged Bloom Color: versicolor Lighting: Full-Sun USDA Zone:

***Nelumbo nucifera* sp****Snow White Lotus**

Small/medium hardy lotus. Double white blooms with dark green leaves.

Keep tubers below water surface. Sm-med height. Submerge 3"-2ft. Rich soil. Dormant in winter.

Habit: Submerged Bloom Color: white Lighting: Full-Sun USDA Zone:

***Nelumbo nucifera* sp****High Noon Lotus**

Small/medium hardy lotus with a single yellow flower, held high above the dark green leaves

Keep tubers below water surface. 2-3' height. Submerge 3"-2ft. Rich soil. Dormant in winter.

Habit: Submerged Bloom Color: light yellow Lighting: Full-Sun USDA Zone:

***Nelumbo nucifera* sp****Red Rosy Lotus**

Medium/large hardy lotus. Large and multiple red blooms with dark green leaves. Multi-petal.

Keep tubers below water surface. Med-lg height. Submerge 3"-2ft. Rich soil. Dormant in winter.

Habit: Submerged Bloom Color: red Lighting: Full-Sun USDA Zone:

***Nelumbo nucifera* 'Spring Bird'****Spring Bird Lotus**

Medium lotus with creamy white blooms. Large leaves. Flowers stand above water surface.

Keep tubers below water surface. 2-3' height. Submerge 3"-2ft. Rich soil. Dormant in winter.

Habit: Submerged Bloom Color: white Lighting: USDA Zone:

***Nelumbo nucifera* 'Yan Xia'****Flame Clouds Lotus**

Small/medium hardy lotus. Classic single red blooms with dark green leaves. Good for patio container.

Keep tubers below water surface. Sm-med height. Submerge 3"-2ft. Rich soil. Dormant in winter.

Habit: Submerged Bloom Color: red Lighting: Full-Sun USDA Zone:

Bee Friendly - no neonicotinoids

Free of synthetic sprays/fertilizers

Irrigated with 100% recycled water

***Nuphar lutea ssp polysepala (cn)*****Spadderdock**

Large-leaved aquatic perennial with bright yellow blossoms. Seeds were used for flour and popcorn. Give off alcohol instead of CO<sub>2</sub> when absorbing O<sub>2</sub>.

Grows in shallow water to 3' deep. Must be partially submerged.

Habit: Submerged    Bloom Color: yellow    Lighting: Sun or Shade    USDA Zone:

***Nymphaea 'Albatross'*****Albatross Waterlily**

White star-shaped flowers with yellow stamens, float on water surface. Olive leaves with reddish underside. Spread 3-5'.

Minimum 6 hrs. direct sunlight for blooming. Grow in 6"-18" water. Re-pot annually. Hardy.

Habit: Submerged    Bloom Color: bright white    Lighting: Full-Sun    USDA Zone: 3

***Nymphaea 'Arc-En-Ciel'*****Arc-En-Ciel Waterlily**

Light pink star flower, fading to white. Leaves are olive green splash with white, pink, yellow, cream and maroon. Aromatic. Great for the collector.

Minimum 6 hrs. direct sunlight for blooming. Grow in 6"-18" water. Re-pot annually. Hardy.

Habit: Submerged    Bloom Color: light pink    Lighting: Full-Sun    USDA Zone:

***Nymphaea 'Barbara Dobbins'*****Barbara Dobbins Waterlily**

Flowers yellow & pink blush to shades of apricot, held above water surface. Dark green speckled leaves. Spread 5'-7'. Prefers warm water.

Minimum 6 hrs. direct sunlight for blooming. Grow in 6"-18" water. Re-pot annually. Hardy.

Habit: Submerged    Bloom Color: changeable    Lighting: Full-Sun    USDA Zone: 3

***Nymphaea 'Charles de Meurville'*****Charles de Meurville Waterlily**

Medium-large plant with dark pink (red) flowers. Spread 4-5', flower 6-7". Good bloomer.

Minimum 6 hrs. direct sunlight for blooming. Grow in 18-24" water. Re-pot annually. Hardy.

Habit: Submerged    Bloom Color: red    Lighting: Sun or filtered    USDA Zone:

***Nymphaea 'Colorado'*****Colorado Waterlily**

Salmon-pink flowers above water surface. Mottled leaves. Free flowering. Does well in cooler water. Flower 5-6"; spread 3-5'.

Minimum 6 hrs. direct sunlight for blooming. Grow in 6"-18" water. Re-pot annually. Hardy.

Habit: Submerged    Bloom Color: peach    Lighting: Sun or filtered    USDA Zone: 3

***Nymphaea 'Comanche'*****Comanche Waterlily**

Changeable yellow-apricot flowers, held above water surface. Free flowering. Green leaves. Spread 4-5'. Medium to large variety.

Minimum 6 hrs. direct sunlight for blooming. Grow in 6"-18" water. Re-pot annually. Hardy.

Habit: Submerged    Bloom Color: changeable    Lighting: Full-Sun    USDA Zone: 3

Bee Friendly - no neonicotinoids

Free of synthetic sprays/fertilizers

Irrigated with 100% recycled water

***Nymphaea 'Conqueror'*****Conqueror Waterlily**

Deep red inner petals and pink outer petals. Flower 7-8". Slightly fragrant. Deep green leaves slightly bronzed. Spread 5'. Hardy.

Minimum 6 hrs. direct sunlight for blooming. Grow in 6"-18" water. Re-pot annually. Hardy.

Habit: Submerged    Bloom Color: red blush    Lighting: Full-Sun    USDA Zone: 3

***Nymphaea 'Hermine'*****Hermine Waterlily**

Small variety with tulip-shaped white blooms. Leaves dark green with plum. Spread 2-3'. Good for tub gardens and small ponds.

Minimum 6 hrs. direct sunlight for blooming. Grow in 6"-18" water. Re-pot annually. Hardy.

Habit: Submerged    Bloom Color: pure white    Lighting: Full-Sun    USDA Zone: 3

***Nymphaea 'Hollandia'*****Hollandia Waterlily**

Large double frosty pink flowers on water surface. Green leaves. Slightly fragrant; can be used as cut flowers. Flower 6-7"; spread 4-5'.

Minimum 6 hrs. direct sunlight for blooming. Grow in 6"-18" water. Re-pot annually. Hardy.

Habit: Submerged    Bloom Color: light pink    Lighting: Full-Sun    USDA Zone: 3

***Nymphaea 'Joey Tomocik'*****Joey Tomocik Waterlily**

Lemon-yellow blossoms. Mottle leaves. Long flowering season. Flowers above water surface. Flowers 4-5"; Spread 4-5'. Prefers warmer water.

Minimum 6 hrs. direct sunlight for blooming. Grow in 6"-18" water. Re-pot annually. Hardy.

Habit: Submerged    Bloom Color: bright yellow    Lighting: Full-Sun    USDA Zone: 3

***Nymphaea 'Laydekeri'*****Laydekeri Waterlily**

Free flowering small water lily with crimson red flower. Slightly fragrant. New leaves purple-green. Spread 4-5'.

Minimum 6 hrs. direct sunlight for blooming. Grow in 4"-24" water. Re-pot annually. Hardy.

Habit: Submerged    Bloom Color: dark red    Lighting: Full-Sun    USDA Zone: 3

***Nymphaea 'Luciana'*****Pink Beauty Waterlily**

Cup shaped pinkish-red, flecked flowers. Green leaves. Slightly fragrant. Free flowering. Spread 3-4'.

Minimum 6 hrs. direct sunlight for blooming. Grow in 6"-18" water. Re-pot annually. Hardy.

Habit: Submerged    Bloom Color: pink    Lighting: Full-Sun    USDA Zone: 3

***Nymphaea 'Mayla'*****Mayla Waterlily**

Large & open flowers, orange stamens, float on water surface. Fragrant. Flower 5-6"; spread 6-8'.

Minimum 6 hrs. direct sunlight for blooming. Grow in 18-24" water. Re-pot annually. Hardy.

Habit: Submerged    Bloom Color: fushia    Lighting: Full-Sun    USDA Zone:



Bee Friendly - no neonicotinoids

Free of synthetic sprays/fertilizers

Irrigated with 100% recycled water

***Nymphaea 'Meteor'*****Rembrandt Waterlily**

Wine-red flowers with white tips. Copper-green colored leaves. Floats on water surface. Slightly fragrant. Flower 5-6"; spread 4-6'.

Minimum 6 hrs. direct sunlight for blooming. Grow in 6"-18" water. Re-pot annually. Hardy.

Habit: Submerged    Bloom Color: red blush    Lighting: Part-Sun    USDA Zone: 3

***Nymphaea 'Odorata Sulphurea Grandiflora'*****Sunrise Yellow Waterlily**

Star-shaped large yellow flowers with dark yellow stamens. Need warmth to develop large blooms. Good in earth bottom pond. Spread 4-5'.

Minimum 6 hrs. direct sunlight for blooming. Grow in 6"-18" water. Re-pot annually. Hardy.

Habit: Submerged    Bloom Color: yellow    Lighting: Full-Sun    USDA Zone: 3

***Nymphaea 'Perry's Dbl White'*****Perry's Double White Waterlily**

Striking white, fully double blooms. Free flowering. New leaves bronze, maturing to green. Spread 4-5'. Better in large container.

Minimum 6 hrs. direct sunlight for blooming. Grow in 6"-18" water. Re-pot annually. Hardy.

Habit: Submerged    Bloom Color: pure white    Lighting: Full-Sun    USDA Zone: 3

***Nymphaea sp.*****Perry's Almost Black Water Lily**

Medium-Large plant with dark red peony shaped flower nearly black at the center. Dark green leaves. Good bloomer. Spread 3.5-5'. Flower 5-6".

Minimum 6 hrs. direct sunlight for blooming. Grow in 18-24" water. Re-pot annually. Hardy.

Habit: Submerged    Bloom Color: red    Lighting: Full-Sun    USDA Zone:

***Nymphaea sp.*****Charlene Strawn Water Lily**

Medium-Large plant with lemon-yellow flower, mottled leaves. Fragrant. Good bloomer. Spread 3-5'. Flower 6-8".

Minimum 6 hrs. direct sunlight for blooming. Grow in 18-24" water. Re-pot annually. Hardy.

Habit: Submerged    Bloom Color: yellow    Lighting: Full-Sun    USDA Zone:

***Nymphaea 'Sribangpra'*****Sribangpra Waterlily**

Yellow pointy petals with peach tint on edges. Mottled leaves. Spread 4-6'. Prolific bloomers.

Minimum 6 hrs. direct sunlight for blooming. Grow in 6"-18" water. Re-pot annually. Hardy.

Habit: Submerged    Bloom Color: bright yellow    Lighting: Full-Sun    USDA Zone: 4

***Nymphaea 'Steven Strawn'*****Steven Strawn Waterlily**

Small star-shaped dark red flowers with yellow center. Speckled leaves. Free flowering. Good for all size tubs.

Minimum 6 hrs. direct sunlight for blooming. Grow in 6"-18" water. Re-pot annually. Hardy.

Habit: Submerged    Bloom Color: deep red    Lighting: Full-Sun    USDA Zone: 3

Bee Friendly - no neonicotinoids

Free of synthetic sprays/fertilizers

Irrigated with 100% recycled water

***Nymphaea 'Texas Dawn'*****Texas Dawn Waterlily**

Inner petals rich yellow, outer petals blushed pink. Leaves green on top, purple underside. Fragrant. Prefers warm water.

Minimum 6 hrs. direct sunlight for blooming. Grow in 6"-18" water. Re-pot annually. Hardy.

Habit: Submerged Bloom Color: yellow-pink Lighting: Full-Sun USDA Zone: 3

***Nymphaea 'Virginalis'*****Virginalis Waterlily**

White flowers with yellow stamens. Large green leaves with bronzy underside. Dependable bloomer. Flower 4-6"; spread 3-4'.

Minimum 6 hrs. direct sunlight for blooming. Grow in 6"-18" water. Re-pot annually. Hardy.

Habit: Submerged Bloom Color: pure white Lighting: Full-Sun USDA Zone: 3

***Nymphaea 'Wanvisa'*****Wanvisa Waterlily**

Medium variety. Peachy-pink speckled petals with streaks of creamy yellow. Speckled leaves. Good bloomer. Flower 3-5"; spread 3-4'.

Minimum 6 hrs. direct sunlight for blooming. Grow in 18-24" water. Re-pot annually. Hardy.

Habit: Submerged Bloom Color: peach, yellow Lighting: Sun or filtered USDA Zone: 4

***Nymphaea x marliacea 'Carnea'*****Carnea Waterlily**

Soft pink on edges of white flowers. Painted by Monet. Good for small or mid-sized tubs. New leaves purple, maturing to dark green. 4-5' spread.

Minimum 6 hrs. direct sunlight for blooming. Grow in 6"-18" water. Re-pot annually. Hardy.

Habit: Submerged Bloom Color: pink-white Lighting: Full-Sun USDA Zone: 3

***Nymphaea x marliacea 'Chromatella'*****Chromatella Waterlily**

Light yellow fragrant flowers. Dark green leaves. Spread of 2-3'. Free flowering. Good for all sizes of tubs.

Minimum 6 hrs. direct sunlight for blooming. Grow in 6"-18" water. Re-pot annually. Hardy.

Habit: Submerged Bloom Color: yellow Lighting: Full-Sun USDA Zone: 3

***Nymphaea x marliacea 'Rosea'*****Rosea Waterlily**

Large plant, with classic pink flower. Good bloomer. Spread 3-6'. Flower 5".

Minimum 6 hrs. direct sunlight for blooming. Grow in 18-24" water. Re-pot annually. Hardy.

Habit: Submerged Bloom Color: pink Lighting: Full-Sun USDA Zone: 3

***Nymphaea x marliacea 'Rubra Punctata'*****Rubra Punctata Water Lily**

Large plant, with red flower. Good bloomer. Spread 3-6'. Flower 5".

Minimum 6 hrs. direct sunlight for blooming. Grow in 18-24" water. Re-pot annually. Hardy.

Habit: Submerged Bloom Color: red Lighting: Full-Sun USDA Zone: 3

Bee Friendly - no neonicotinoids

Free of synthetic sprays/fertilizers

Irrigated with 100% recycled water

***Nymphaea 'Yellow Pygmy'*****Yellow Pygmy Waterlily**

Small variety with soft yellow flower. Mottled leaves. Good for small to medium tubs. One of the oldest waterlily hybrids. Good bloomer.

Minimum 6 hrs. direct sunlight for blooming. Grow in 6"-18" water. Re-pot annually. Hardy.

Habit: Submerged    Bloom Color: yellow    Lighting: Full-Sun    USDA Zone: 4

***Nymphoides crenata*****Water Snowflake - Yellow**

Small yellow fringed flower stands above water surface. Heart-shaped red and green leaves.

Free flowering. Keep from water spray.

Prefers warm, still or slowly flowing water. Frost tolerant. Submerge to 2'.

Habit: Submerged    Bloom Color: yellow    Lighting: Full-Sun    USDA Zone: 5

***Nymphoides indica*****Water Snowflake - White**

Small white fringed flower stands above water surface. Green glossy leaves. Free flowering.

Keep from water spray.

Prefers warm, still or slowly flowing water. Submerge to 2'. Semi-tropical.

Habit: Submerged    Bloom Color: white    Lighting: Full-Sun    USDA Zone: 8

***Nymphoides peltata*****Floating Heart**

Wavy heart-shaped leaves, purple edges & underside. Butter-yellow flowers. Easily controlled in most artificial pond settings.

Must be submerged 6"-2' depth. Everygreen.

Habit: Submerged    Bloom Color: yellow    Lighting: Sun or filtered    USDA Zone: 5

***Oenanthe javanica*****Green Water Celery**

Edible aquatic with serrated green foliage similar to celery leaves. Red stems. Good Koi food.

Filtration plant.

Submerge or very wet soil. Grows to 6" tall. Prefers cooler climates. Prune often.

Habit: Bog    Bloom Color:    Lighting: Sun or filtered    USDA Zone: 7

***Oenanthe javanica 'Flamingo'*****Variegated Water Celery**

Edible aquatic with serrated multicolored white pink and green foliage similar to celery leaves.

Good Koi food. Filtration plant.

Submerge or very wet soil. Grows to 6" tall. Prefers cooler climates. Prune often.

Habit: Bog    Bloom Color:    Lighting: Sun or filtered    USDA Zone: 7

***Oenanthe sarmentosa (cn)*****Pacific Water Parsley**

Variety of water celery. Clumping groundcover with stalks of small white flowers. CA native.

Keep moist. Groundcover.

Habit: Bog    Bloom Color: white    Lighting: Sun or filtered    USDA Zone:

Bee Friendly - no neonicotinoids

Free of synthetic sprays/fertilizers

Irrigated with 100% recycled water

***Ophiopogon japonicus*****Mondo Grass**

Clumping small grass good for moist areas, with very rich, dark green blades. Good for pond side or rock gardens.

Slow growing. Grows to 6". Prefers partial shade.

Habit: Marginal

Bloom Color:

Lighting: Part-Sun

USDA Zone: 6

***Ophiopogon japonicus 'Nanus'*****Dwarf Mondo Grass**

Lush groundcover of dense, dark green grass-like clumps. Half the size of regular mondo grass.

Grows 4"-6" tall. Needs regular watering. Slow growing.

Habit: Marginal

Bloom Color:

Lighting: Sun or filtered

USDA Zone: 6

***Oxalis oregana 'White' (cn)*****White Redwood Sorrel**

Woodland plant native to west US coastal forests. Attracts butterflies. Flower white with pink veins. CA native.

Moist soil. Ground cover. Prefers shade to part-shade.

Habit: Marginal

Bloom Color: white

Lighting: Shade

USDA Zone: 7

***Phalaris arundinacea 'Dwarf Garters'*****Dwarf Ribbon Grass**

Low-growing grass with vertically striped green and cream foliage. Clumping groundcover, borders, or in containers. Cut back in spring.

Prefers moist, well-drained soil, tolerates dry or poor soils. Grows 12-15" tall. N. Am. native.

Habit: Marginal

Bloom Color:

Lighting: Sun or filtered

USDA Zone: 4

***Phalaris arundinacea 'Picta'*****Ribbon Grass**

Marginal aquatic grass with variegated green and white leaves. Grows quickly. Does well in containers.

Tolerates very moist to dry conditions and most soil types. 2'-3' height.

Habit: Bog

Bloom Color:

Lighting: Sun or filtered

USDA Zone: 4

***Phalaris arundinacea 'Picta Rosa'*****Pink Ribbon Grass**

Variegated aquatic grass with green and creamy white stripes and pink highlights.

Moist soil. Grows to 2' tall.

Habit: Bog

Bloom Color:

Lighting: Sun or filtered

USDA Zone:

***Phyla nodiflora (cn)*****Texas Frog Fruit**

Rambling ground cover. Tolerates drought and flooding. Soft green leaves, pinkish flowers.

Attracts butterflies. CA native.

Keep from frost. Usually found in wetlands. Sprawling.

Habit: Marginal

Bloom Color: pink

Lighting: Full-Sun

USDA Zone:

Bee Friendly - no neonicotinoids

Free of synthetic sprays/fertilizers

Irrigated with 100% recycled water

***Physocarpus capitatus (cn)*****Western Ninebark**

Deciduous shrub with small clusters of white flowers and red fruits. CA native.

Tolerates high moisture but drought tolerant. Grows 4-8' tall.

Habit: Marginal

Bloom Color: white

Lighting: Part-Sun

USDA Zone:

***Pinellia ternata*****Crowdipper Plant**

Dark green tri-lobed leaf with long protruding spadix. Rare medicinal herb native to Asia. Can be invasive.

Grows 6-8" tall. Self-seeding. Prefers moist soil and filtered sunlight.

Habit: Bog

Bloom Color:

Lighting: Part-Sun

USDA Zone:

***Pistia stratiotes*****Water Lettuce**

Floating plant with rigid, succulent-like light dull green leaves covered with small hairs. Looks like open head of floating lettuce. No leaf stalks.

Protect from frost. Invasive in warm climates.

Habit: Floating

Bloom Color:

Lighting: Part-Sun

USDA Zone:

***Pontederia cordata*****Blue Pickerel**

Large, heart-shaped shiny green leaves, spike of small violet-blue flowers. Clumping. Good filtration plant. Attracts frogs and dragonflies.

Submerge to 8". Grows 2'-3' tall. Dormant in winter. Frost tolerant.

Habit: Bog

Bloom Color: blue-lavender

Lighting: Full-Sun

USDA Zone: 4

***Pontederia cordata sp.*****Pink Pickerel**

Large, heart shaped shiny green leaves, spike of small pinkish flowers. Clumping. Good filtration plant. Attracts frogs and dragonflies.

Submerge to 8". Grows 2'-3' tall. Dormant in winter. Frost tolerant.

Habit: Bog

Bloom Color: musty pink

Lighting: Full-Sun

USDA Zone: 4

***Populus fremontii (cn)*****Fremont Cottonwood**

Deciduous tree native to riparian zones. Good for bird &amp; butterfly gardens. Older trees have whitish cracked bark. Good restoration plant. CA native.

Very fast growing 39-115' tall. Keep from septic systems.

Habit: Marginal

Bloom Color:

Lighting: Full-Sun

USDA Zone:

***Potentilla glandulosa (cn)*****Sticky Marsh Cinquefoil**

Tall perennial with creamy yellow flowers. Red stems. Flowers last longer in shade. CA native.

Grows 1-2' tall. Grows in shade and sun.

Habit: Marginal

Bloom Color: creamy yellow

Lighting: Sun or filtered

USDA Zone:

Bee Friendly - no neonicotinoids

Free of synthetic sprays/fertilizers

Irrigated with 100% recycled water

***Potentilla gracilis (cn)*****Fivefinger Marsh Cinquefoil**

Multi-stemmed with dark gray-green leaves and silvery undersides. Flowers are pale to dark yellow. CA native.

Grows 1-2.5 ft. Intolerant of shade.

Habit: Marginal

Bloom Color: yellow

Lighting: Full-Sun

USDA Zone:

***Potentilla palustris (cn)*****Marsh Cinquefoil**

Sprawling perennial with purple-red flowers. Related to the rose. Native to N. American wetland meadows. CA native.

Tolerates brackish water. Grows 8"-24" tall.

Habit: Marginal

Bloom Color: maroon

Lighting: Full-Sun

USDA Zone:

***Quercus lobata (cn)*****Valley Oak**

Fast growing white oak. Deeply lobed leaves, green with slight gray coloring. Can live hundreds of years.

Requires moderate watering but not bog. Grows to 70' tall. Can be planted in lawn when young.

Habit: Marginal

Bloom Color:

Lighting: Sun or filtered

USDA Zone: 3

***Ranunculus californica (cn)*****California Buttercup**

One of the first flowering plants of the year. Yellow flowers. Easy to grow and profuse bloomer. CA native.

Enjoys moist soil but will tolerate drought. Grows 1-2' tall.

Habit: Bog

Bloom Color: yellow

Lighting: Full-Sun

USDA Zone:

***Ranunculus flammula (cn)*****Creeping Buttercup**

Shallow water plant. Creeping perennial, tiny yellow flowers, delicate foliage. Blooms throughout summer. CA native.

Likes wet boggy soil. Grows to 1' height. Spreads by runners. Tolerates brackish water.

Habit: Bog

Bloom Color: yellow

Lighting: Full-Sun

USDA Zone:

***Ranunculus repens*****Marsh (Swamp) Buttercup**

Good groundcover. Leaf resembles parsley. Small yellow flower. Grows by runners.

Requires boggy conditions.

Habit: Bog

Bloom Color: yellow

Lighting: Full-Sun

USDA Zone:

***Rhododendron occidentale (cn)*****Western Azalea**

Deciduous shrub found in streambanks and moist areas. Fragrant flowers, white to pink with yellow-orange markings. Bright green foliage. CA native.

Needs light to bloom. Filtered shade. Acidic, moist soil; cool root zone. Slow-growing. 3-13' .

Habit: Marginal

Bloom Color: white, pink, yel

Lighting: Part-Sun

USDA Zone:

Bee Friendly - no neonicotinoids

Free of synthetic sprays/fertilizers

Irrigated with 100% recycled water

***Rosa californica (cn)*****California Wild Rose**

Deciduous shrub with single fragrant pink blossoms and red fruits. Good living fence. CA native.

Keep moist. Grows 3-5' tall.

Habit: Marginal

Bloom Color: pink

Lighting: Full-Sun

USDA Zone:

***Rotala indica (rotundifolia)*****Pink Sprite**

Marsh variety, with circular leaves. Free flowering in warm weather. Flower spikes with pink blooms. Also called Roundleaf Toothcup. Use in aquarium.

Compact and bushy. Trim frequently. Can be fully submerged. Must be wet at all times.

Habit: Emerging

Bloom Color: pink

Lighting: Full-Sun

USDA Zone:

***Rubus ursinus (cn)*****California Blackberry**

Native wild California blackberry. Evergreen. Excellent habitat plant. CA native.

Grows in patches up to 3' tall and 6' wide. Prefers moist soil but tolerates drought.

Habit: Bog

Bloom Color:

Lighting: Part-Sun

USDA Zone:

***Ruellia brittonia 'Katie'*****Dwarf Blue Bells**

Lavender-blue flowers. Dwarf version of shrubby native of SW U.S. and Mexico. Good in containers. Butterfly plant.

Grows 6"-12" tall. Tolerates shallow ponds and bogs up to 6" of water. Also tolerates dryness.

Habit: Marginal

Bloom Color: blue

Lighting: Sun or filtered

USDA Zone: 7b

***Ruellia brittoniana "Chi Chi"*****Pink Bellflower**

Small petunia-like pink flower with narrow deep green-purple leaves. Bushy.

Clumping growth. Grows 24"-36" height. Prefers moist boggy soil.

Habit: Marginal

Bloom Color: pink

Lighting: Sun or filtered

USDA Zone:

***Rumex sanguineus*****Red-Veined Dock**

Light green leaves with dark maroon veins. Tiny star-shaped brown fruit. Attracts butterflies.

Prefers moist soil. Good for borders or containers.

Habit: Marginal

Bloom Color:

Lighting: Sun or filtered

USDA Zone: 4

***Sagittaria cuneata (cn)*****Arum Leaf Arrowhead**

Perennial marsh herb. Wide arrow shaped leaves, fleshy tuber like roots. Small white flowers grow on a single spike. CA native.

Grows best in calm, shallow water but can be submerged to 3'. Height 1-2 ft. Dormant in winter.

Habit: Emerging

Bloom Color: white

Lighting: Sun or filtered

USDA Zone:

Bee Friendly - no neonicotinoids

Free of synthetic sprays/fertilizers

Irrigated with 100% recycled water

***Sagittaria graminea*****Fairy Lance Arrowhead**

Spoon-shaped foliage. Long wands of white flowers. True aquatic and prefers partial submersion. Appearance varies by climate.

Prefers very moist soil. Can be submerged to 10".

Habit: Emerging      Bloom Color: white      Lighting: Sun or filtered      USDA Zone: 4

***Sagittaria lancifolia 'Ruminoides'*****Red Stemmed Sagittaria**

Thick upright red stems with elongated oval leaves. Clusters of white flowers in summer.

Wet soil or submerged to 6".

Habit: Bog      Bloom Color: white      Lighting: Sun or filtered      USDA Zone:

***Sagittaria latifolia (cn)*****Broadleaf Arrowhead**

Perennial herb. Very narrow leaves in arrowhead shape. Marsh plant. Small white flowers grow on a single spike. CA native.

Grows best in calm, shallow water but can be submerged to 3'. Height 1-2 ft. Dormant in winter.

Habit: Emerging      Bloom Color: white      Lighting: Sun or filtered      USDA Zone:

***Sagittaria montevidensis (cn)*****Giant Arrowhead**

Aquatic freshwater herb found in shallow waters. Three white petal flowers with wine-red spots, grow on single stalk. CA native.

Grows best in calm, shallow water. Height 2'-3'. Hardy in mild winters.

Habit: Emerging      Bloom Color: white      Lighting: Sun or filtered      USDA Zone:

***Salix alba 'Tristis'*****Golden Weeping Willow**

Delicate weeping, golden branches with light green leaves. Used to prevent erosion and provide shade.

Can be submerged. Grows to 80' height.

Habit: Marginal      Bloom Color:      Lighting: Full-Sun      USDA Zone:

***Salix babylonica 'Yatsubusa'*****Dwarf Weeping Willow**

Slower growing, smaller version of weeping willow tree. Delicate deciduous foliage is lime green early in season.

Wet conditions. Grows to 10' height if planted in ground. Good for bonsai.

Habit: Marginal      Bloom Color:      Lighting: Sun or filtered      USDA Zone:

***Salix caprea*****Pink Pussy (Goat) Willow**

Large shrub or small tree. Whiplike, upright stems with showy pinkish male or green female flowers in late winter.

Thrives in moist soil, tolerates drier. Grows 10-20' tall. Tolerates part-shade. Hardy.

Habit: Marginal      Bloom Color:      Lighting: Full-Sun      USDA Zone: 4



Bee Friendly - no neonicotinoids

Free of synthetic sprays/fertilizers

Irrigated with 100% recycled water

***Salix exigua (cn)*****Sandbar Willow**

Tall shrub with narrow silky-gray leaves and gray bark. Good nectar source. Used for wetland restoration. CA native.

Keep moist. Grows 4-15' tall.

Habit: Bog

Bloom Color:

Lighting: Sun or filtered

USDA Zone:

***Salix integra 'Hakuro Nishiki'*****Dappled Pink Willow**

Small tree or shrub. Pink new foliage turns cream-white and green. Red stems in winter.

Grows 5'-10' tall. Prefers moist soil.

Habit: Marginal

Bloom Color:

Lighting: Full-Sun

USDA Zone:

***Salix laevigata (cn)*****Red Willow**

Deciduous shrub or tree with red-brown bark and pale leaves. Good for stream stabilization. CA native.

Keep moist. Grows to 45' tall.

Habit: Bog

Bloom Color:

Lighting: Full-Sun

USDA Zone:

***Salix lasiolepis*****Arroyo Willow**

Riparian shrub or multi-trunk tree, used for stream bank stabilization. Desiduous. CA native.

Grows to 39' tall. Frost tolerant; not salt tolerant. Grows in clay, sand, loam. Keep wet.

Habit: Marginal

Bloom Color:

Lighting: Full-Sun

USDA Zone: 4

***Salix matsudana 'Scarlet Curls'*****Scarlet Curls Willow**

Light green leaves with twisted, red-tinged curly branches. Used in flower arrangements.

Can be submerged. Grows to 20' height.

Habit: Marginal

Bloom Color:

Lighting:

USDA Zone:

***Salix matsudana 'Tortuosa'*****Curly Willow**

Light green leaves with twisted, curly branches. Used in flower arrangements. True tree.

Can be submerged. Grows to 20' height.

Habit: Marginal

Bloom Color:

Lighting: Full-Sun

USDA Zone:

***Salix purpunea 'Nana'*****Dwarf Arctic Blue Willow**

Shrub-like willow. Slender blue-green leaves with dark purples stems. Can be pruned to stay small.

Wet conditions. Good for bonsai Grows 3'-7' tall.

Habit: Marginal

Bloom Color:

Lighting: Sun or filtered

USDA Zone:

Bee Friendly - no neonicotinoids

Free of synthetic sprays/fertilizers

Irrigated with 100% recycled water

***Salix sp.me*****Pussy Willow**

Small willow that produces catkins in early spring that turn into flowers. Original stock from Graton, Ca.

Prefer plenty of water. Climate adaptable.

Habit: Marginal

Bloom Color:

Lighting:

USDA Zone:

***Salvia uliginosa*****Bog Sage**

Perennial shrub with sky-blue flowers. Blooms in late summer. Good butterfly plant. Tolerant of dry conditions.

Prefers wet soil. Cold hardy and heat tolerant. Grows 6-7' tall, 3' wide.

Habit: Bog

Bloom Color: blue-purple

Lighting: Full-Sun

USDA Zone: 8

***Sambucus mexicana (cn)*****Blue Elderberry**

Deciduous shrub or small tree. Grows along river and streams. Flat clusters of creamy yellow flowers then blue berries. CA native.

Grows 8-25' tall. Keep moist.

Habit: Marginal

Bloom Color: creamy yellow

Lighting: Sun or filtered

USDA Zone:

***Saururus cernuus*****Lizard's Tail**

Green heart-shaped leaves alternate on a long stem. Slightly curled spike of white flowers. Will flower in shade. Fragrant.

Dormant in winter. Sandy or boggy soil. Can be submerged to 6".

Habit: Bog

Bloom Color: white

Lighting: Sun or filtered

USDA Zone:

***Saururus cernuus 'Red Stem'*****Red Stemmed Lizard's Tail**

Green heart-shaped foliage on red stems. White spike flower clusters.

Submerge 1"- 6". Grows to height of 3'.

Habit: Bog

Bloom Color:

Lighting: Sun or filtered

USDA Zone:

***Saururus chinensis*****Chinese Lizard's Tail**

Glossy bright green foliage with white spike flower clusters. Textured leaves. Good for pollinators.

Submerge 1"- 6". Grows to height of 2'.

Habit: Bog

Bloom Color:

Lighting: Sun or filtered

USDA Zone: 4

***Schoenoplectus acutus (cn)*****Giant Bulrush (Tule)**

Thick, erect green stems. Ecologically important as wind & current buffer, reducing erosion.

Provides wildlife habitat. Used for baskets. CA native.

Grows to 3-10' tall. Prefers partial submersion or bog.

Habit: Bog

Bloom Color:

Lighting: Full-Sun

USDA Zone: 3

Bee Friendly - no neonicotinoids

Free of synthetic sprays/fertilizers

Irrigated with 100% recycled water

***Schoenoplectus americanus (cn)*****Three-Square Bulrush**

Flowering rush with stiff three-angled stems. Food source for wildlife. CA native.

Keep moist. Grows to 2' tall.

Habit: Bog

Bloom Color:

Lighting: Full-Sun

USDA Zone:

***Schoenoplectus tabernaemontani*  
'Albescens'****White Rush**

White to light green tubular stalks. Vertical and round narrow stems.

Slow growing. Prefers submersion 1-4". Grows 3-6' tall.

Habit: Bog

Bloom Color:

Lighting: Full-Sun

USDA Zone:

***Schoenoplectus zebrinus*****Zebra Rush**

Clumps of white-striped round stems. Stripes bright in spring, fade in summer.

Moist boggy soil. Can be submerged to 6". Dormant in winter.

Habit: Bog

Bloom Color:

Lighting: Full-Sun

USDA Zone:

***Scirpus cernuus (cn)*****Fiber Optic Grass**

Bright green evergreen foilage with graceful, weeping stems. Good container plant. CA native.

Grows to 10"-14" tall. Prefers moist soil. Can be submerged to 2". Heat tolerant.

Habit: Bog

Bloom Color:

Lighting: Sun or filtered

USDA Zone:

***Scirpus cernuus 'Dwarf Form'*****Dwarf Fiber Optic Grass**

Delicate, straight, short blades that bear a small bulb-like flower at tips.

Must be in water at all times. Prefers swampy areas. 2-3 inches tall.

Habit: Bog

Bloom Color:

Lighting: Full-Sun

USDA Zone:

***Scirpus microcarpus (cn)*****Panicled Bulrush**

Triangular stem with flat grass-like leaves sprouting from base and along stem. Can be used in standing water. CA native.

Keep moist. Grows 2-5' tall.

Habit: Bog

Bloom Color:

Lighting: Sun or filtered

USDA Zone:

***Scrophularia californica (cn)*****Beeplant (Figwort)**

Purplish-red new growth that turns green. Many small maroon-red flowers. Attracts pollinators. CA native.

Forms large colonies in open spaces. Grows 2-3.5' tall.

Habit: Marginal

Bloom Color: maroon-red

Lighting: Full-Sun

USDA Zone:

Bee Friendly - no neonicotinoids

Free of synthetic sprays/fertilizers

Irrigated with 100% recycled water

***Sidalcea calycosa ssp. Rhizomata (cn)*****Point Reyes Checkerbloom**

Rare CA native groundcover for moist spots. Pink 1.5" blooms; round, glossy, scalloped leaves. Vigorous.

May go dormant in drought conditions. Grows 6-12" tall.

Habit: Bog      Bloom Color: pink      Lighting: Sun or filtered      USDA Zone: 9

***Sisyrinchium bellum (cn)*****Blue Eyed Grass**

Small clumping grass with iris-like leaves. Blue star flowers grow at tip of leaf. Native to California. Evergreen.

Grows to 12" tall. Grows in wetlands and woodlands.

Habit: Marginal      Bloom Color: blue      Lighting: Sun or filtered      USDA Zone:

***Sisyrinchium californicum (cn)*****Yellow Eyed Grass**

Small clumping grass with iris-like leaves. Yellow star flowers grow at tip of leaf.

Grows to 8" tall. Prefers moist soil. California native.

Habit: Marginal      Bloom Color: yellow      Lighting: Full-Sun      USDA Zone:

***Sisyrinchium sp.*****Graceful Yellow Eyed Grass**

Graceful clumping grass with iris-like leaves, taller than *S. californicum*. Yellow star flowers grow at tip of leaf.

Grows to 8-12" tall. Prefers moist soil.

Habit: Marginal      Bloom Color: yellow      Lighting: Full-Sun      USDA Zone:

***Symphoricarpos albus v. laevigatus (cn)*****Snowberry**

Deciduous shrub with clusters of pinkish flowers then white berries. Understory plant, good bird habitat. CA native.

Grows 4' tall and spreading. Prefers part shade. Tolerates very moist and dry soil.

Habit: Marginal      Bloom Color: pink, white      Lighting: Part-Sun      USDA Zone:

***Taxodium ascendens*****Pond Cypress**

A deciduous, aquatic conifer similar to the Bald Cypress. Grayish bark.

Can be submerged. Grows to 130' tall.

Habit: Bog      Bloom Color:      Lighting: Full-Sun      USDA Zone:

***Taxodium distichum*****Bald Cypress**

A deciduous, aquatic conifer native to Southeastern and Gulf Coastal Plains. Reddish gray bark. Produces tapered knees when grown near water.

Can be submerged. Grows to 130' tall.

Habit: Bog      Bloom Color:      Lighting: Full-Sun      USDA Zone:

Bee Friendly - no neonicotinoids

Free of synthetic sprays/fertilizers

Irrigated with 100% recycled water

***Tellima grandiflora (cn)*****Fringe Cups**

Mounds of soft foliage with many small flowers blooming green and changing to pink. CA native.

Clumping shade plant. Grows 18-24" tall. Tolerates very moist to dry soils.

Habit: Marginal

Bloom Color: green, pink

Lighting: Shade

USDA Zone:

***Thalia dealba*****Powdery Alligator Flag**

Tall clumping aquatic plant. Elongated, broad, powdery leaves supported by a thick stem. Violet flowers grow on spike above foliage. Good with koi.

Hardy semi-tropical aquatic perennial. Grows 3-6' tall. Can be submerged to 12".

Habit: Bog

Bloom Color: mauve

Lighting: Full-Sun

USDA Zone: 5

***Thalia geniculata 'Ruminoides'*****Red-Stemmed Thalia**

Green, elongated leaves supported by large red stems with delicate lavender flowers. Tall clumping aquatic plant. Good with koi.

Hardy semi-tropical aquatic perennial. Grows 5-8' tall. Can be partially submerged. Frost tender.

Habit: Bog

Bloom Color: mauve

Lighting: Full-Sun

USDA Zone: 7

***Tradescantia sp.*****Spiderwort - Blue & Gold**

Golden narrow foliage with purple flower clusters. Bloom most of spring and summer.

Grows in clumps at water edge. Grows 1'-2' tall.

Habit: Marginal

Bloom Color: blue

Lighting: Sun or filtered

USDA Zone:

***Tradescantia sp.*****Spiderwort (purple)**

Narrow foliage with dark purple flower clusters. Bloom most of spring and summer.

Grows in clumps at water edge. Grows 1'-2' tall.

Habit: Marginal

Bloom Color: purple

Lighting: Sun or filtered

USDA Zone:

***Tradescantia sp.*****Spiderwort (dark pink)**

Narrow foliage with dark purple flower clusters. Bloom most of spring and summer.

Grows in clumps at water edge. Grows 1'-2' tall.

Habit: Marginal

Bloom Color: dark pink

Lighting: Sun or filtered

USDA Zone:

***Tricyrtis hirta*****Toad Lily**

Unique lily-like flowers that bloom in late summer/fall. Blooms in shade. Native to Japan.

Grows 2-3' tall. Prefers partial or full shade. Keep moist.

Habit: Marginal

Bloom Color: maroon

Lighting: Shade

USDA Zone:

Bee Friendly - no neonicotinoids

Free of synthetic sprays/fertilizers

Irrigated with 100% recycled water

***Tulbaghia natalensis*****Sweet Society Garlic**

Long narrow leaves with delicate lavender flowers. Small plant. Clumping. Scent of cloves.

Clumping. Good container plant. Enjoys a lot of water. Sun for flowering. Height to 12".

Habit: Marginal      Bloom Color: mauve      Lighting: Sun or filtered      USDA Zone:

***Tulbaghia violacea*****Society Garlic**

Clumping perennial with narrow, straight, grayish-green leaves and clusters of lilac flowers.

Strong odor. Edible.

Good container plant. Enjoys a lot of water. Sun for flowering. Height to 12".

Habit: Marginal      Bloom Color: mauve      Lighting: Full-Sun      USDA Zone: 3

***Tulbaghia violacea 'Silver Lace'*****Variegated Society Garlic**

Clumping perennial with narrow, straight, variegated leaves and clusters of lilac flowers. Strong odor. Edible.

Good container plant. Enjoys a lot of water. Sun for flowering. Height to 12".

Habit: Marginal      Bloom Color: mauve      Lighting: Full-Sun      USDA Zone: 3

***Typha latifolia (cn)*****Common Cattail Rush (Cumbungi)**

Narrow-leaved tall plant with velvety brown flower head. Classic pond plant. Good bird habitat. CA native.

Submerge. Dies back in winter. Likes brackish water. Grows 4'-8' tall.

Habit: Emerging      Bloom Color:      Lighting: Full-Sun      USDA Zone: 4

***Typha latifolia Variegata*****Variegated Cattail Rush**

Narrow green and cream variegated foliage. Smaller than common cattail. Velvety brown flower head

Grows 3-5' tall. Submerge to 12". Moist at all times. Need cold in winter to produce catkins.

Habit: Emerging      Bloom Color:      Lighting: Sun or filtered      USDA Zone:

***Typha laxmannii*****Graceful Cattail Rush**

Flat, narrow leaves. Stalk topped with brown fluffy flower head. Similar to *Typha angustifolia*.

Submerge. Dies back in winter. Likes brackish water. Grows 3'-6' tall.

Habit: Emerging      Bloom Color:      Lighting: Full-Sun      USDA Zone:

***Typha minima*****Miniature Cattail Rush**

Smallest of the cattails. Narrow, upright grassy leaves. Small brown catkins in summer. Perennial.

Shallow or boggy soil to 6" submerged. Grows to 12"-18" height.

Habit: Bog      Bloom Color:      Lighting: Sun or filtered      USDA Zone: 3

Bee Friendly - no neonicotinoids

Free of synthetic sprays/fertilizers

Irrigated with 100% recycled water

***Vallisneria americana*****Eelgrass (3.5" pot)**

Shiny long, flat, limp green leaves with round tips. Tolerates brackish water.

Must be fully submerged. Used on floor of pond or aquarium. Grows 1-6" tall. Prefers warm water

Habit: Submerged    Bloom Color:    Lighting: Full-Sun    USDA Zone: 4

***Viola hederacea*****Australian Jumping Violet**

Pretty water-loving violet with white and purple blooms. Excellent for margins and stream beds.

Grows to 6" tall. Tolerates very moist conditions.

Habit: Marginal    Bloom Color: violet    Lighting: Full-Sun    USDA Zone:

***Vitis californica (cn)*****California Wild Grape**

Deciduous vine with clusters of small edible grapes. Grows along streams. CA native.

Prefers moist conditions. Grows laterally if not staked. Grows to 30'.

Habit: Marginal    Bloom Color:    Lighting: Full-Sun    USDA Zone:

***Wedelia trilobata*****Water Zinnia**

Shiny bright green leaves and trailing habit. Daisy like yellow flowers bloom into the fall.

Moist soil to 2" water. Grows 2-10" tall. Frost tender.

Habit: Bog    Bloom Color: yellow    Lighting: Sun or filtered    USDA Zone:

***Zantedeschia aethiopica 'Childsiana'*****Dwarf Calla Lily (Arum Lily)**

White, funnel-shaped flower, yellow spadix. Blooms early spring and autumn. Heart-shaped green leaves.

Prefers moist to very wet soil. Fertilize well. Hardy. Do not submerge.

Habit: Bog    Bloom Color: white    Lighting: Part-Sun    USDA Zone: 3

***Zantedeschia 'Green Goddess'*****Green Goddess Calla Lily**

Funnel-shaped flower with white center that fades to green edges. Bloom early spring and in autumn. Taller than regular calla lily.

Prefers moist to very wet soil. Fertilize well. Hardy. Do not submerge.

Habit: Bog    Bloom Color: green, cream    Lighting: Part-Sun    USDA Zone: 3

***Zephyranthes candida*****Summer Crocus Rain Lily (white)**

White tubular crocus-like flowers are accented by bright green chive-like leaves. Evergreen.

Grows from bulb.

Grows to 12" height. Bloom late summer-fall. Can be container grown.

Habit: Marginal    Bloom Color: white    Lighting: Sun or filtered    USDA Zone: 7

Bee Friendly - no neonicotinoids

Free of synthetic sprays/fertilizers

Irrigated with 100% recycled water

***Zephyranthes candida*****Summer Crocus Rain Lily (yellow)**

Yellow tubular crocus-like flowers are accented by bright green chive-like leaves. Evergreen.

Grows from bulb.

Grows to 12" height. Bloom late summer-fall. Can be container grown.

Habit: Marginal

Bloom Color: yellow

Lighting: Sun or filtered

USDA Zone: 7

***Zephyranthes robusta*****Pink Summer Crocus**

Large pink tubular crocus-like flowers are accented by bright green chive-like leaves. Evergreen.

Grows from bulb.

Grows to 12" height. Bloom summer-fall. Can be container grown.

Habit: Marginal

Bloom Color:

Lighting:

USDA Zone:

(cn) = California Native

\* = can be invasive

***DO NOT INGEST PLANTS WITHOUT CONSULTING A PROFESSIONAL. Reference to edible aquatic plants is for general information only. Your own research should be undertaken prior to ingesting any part of of any plant. If not properly identified or not properly prepared, some plant parts can be toxic.***



