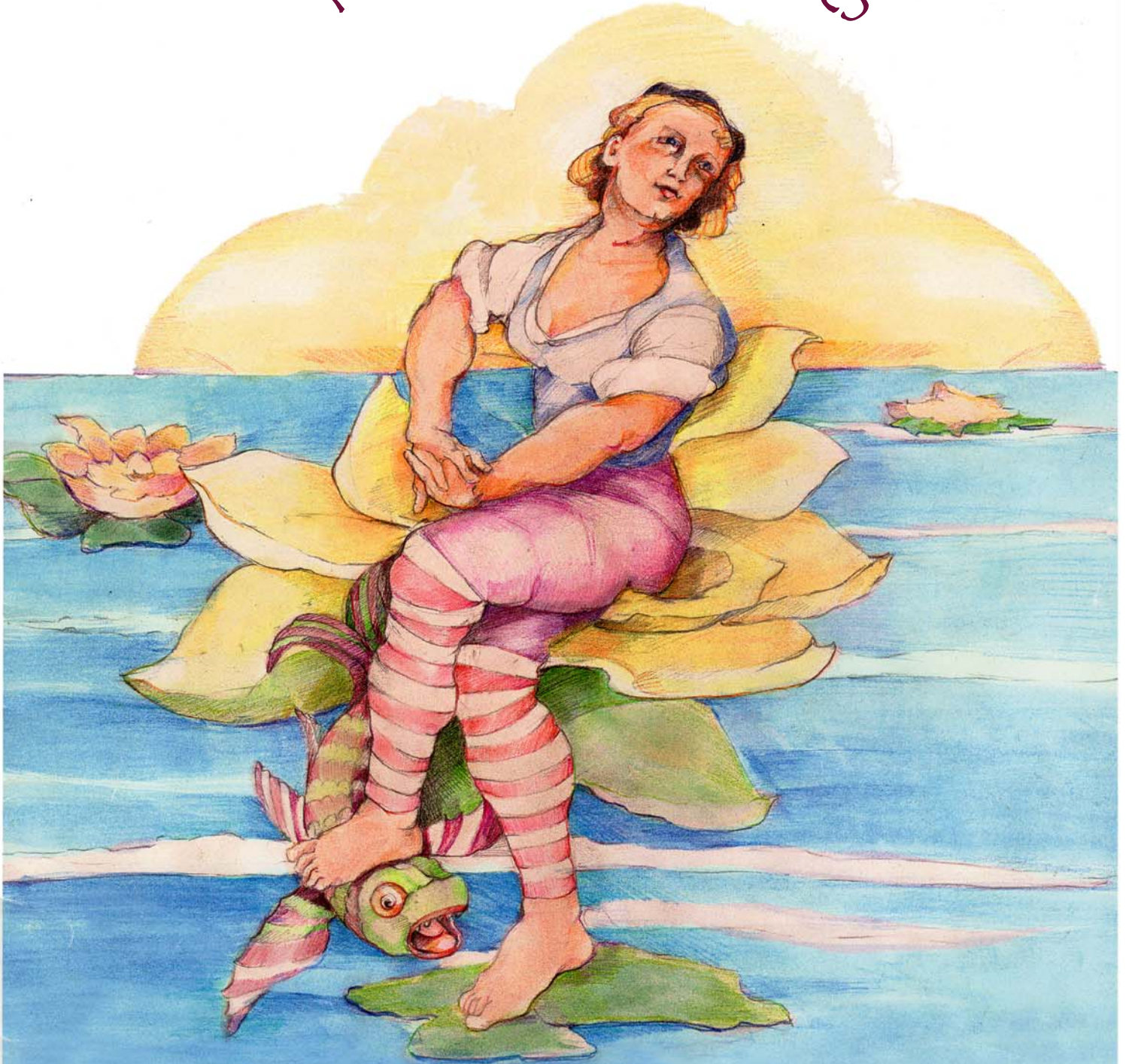


# Walker Avenue Nursery Plants for Wet Places



Wholesale Grower of CA Native & Ornamental Water Plants  
Ponds Water Gardens Wetlands Native Restoration Rain Gardens

WalkerAvenueNursery.com  
orders@WalkerAvenueNursery.com

phone 707.585.7865  
fax 707.341.5125

# Walker Avenue Nursery

wholesale grower of CA native & ornamental aquatic plants

Walker Avenue Nursery is dedicated to growing wetland, riparian & pond plants for landscape contractors, architects & designers, native restoration/revegetation projects, and retail stores. Our plants are irrigated with 100% reclaimed water, free of synthetic pesticides and fertilizers. Grown in Sonoma County.

Our broad inventory of aquatic plants are grown in 4" to 15-gallon containers. CA natives can be grown as large plugs. Plants are prepared in an aquatic soil mix for immediate planting in a pond or marsh. Contract growing available. Delivery available in Northern CA. Pick up by appointment only.

## Water Plant Types

We separate our water plants into six general categories. Plants are identified by type in our catalogue and on our retail tags.

### **Floating**

### **Submerged**

### **Emerging**

### **Bog**

### **Marginal**

### **Landscape**

**Floating** wetland plants float free on the surface of the water with roots dangling in the water

**Submerged** plants must be below the water surface of a pond—leaves may float on or above water surface. Submerged plants cannot survive out of the water.

**Emerging** plants have their roots and part of their stems below the water surface, and their leaves and flower above the water surface. They can be planted from 2-6" below the water surface or in an area of the garden that is most always moist. Do not fully submerge.

**Bog** plants can be planted 2" below the water surface or in an area of the garden that is most always moist. This is the largest variety of water plants available. Do not fully submerge but keep wet at all times, in mud or sand.

**Marginal** plants grow at the interface of wetland and upland habitats. They prefer changing water levels and develop their roots as the water rises over their root ball and recedes.

**Landscape** water plants cannot be planted directly in a body of water. They are landscape plants that like wet to very-wet soil. Do not submerge.

Bee Friendly - no neonicotinoids

Free of synthetic sprays/fertilizers

Irrigated with 100% recycled water

***Achillea millefolium (cn)*****Common Yarrow**

Aromatic green fern-like foliage with long lasting clusters of white flowers. Attracts butterflies.

Medicinal uses. Hardy. Spreads quickly. CA native.

Wide spreading. Can be mowed, tolerates drought, prefers sandy soil. Grows 2-3' tall.

Habit: Marginal

Bloom Color: white

Lighting: Full-Sun

USDA Zone: 3

***Acorus calamus (cn)*****Calamus**

Hardy wetland plant with sword-shaped green leaves. Medicinal plant. Edible. CA native.

Grows 3' height. Moist soil to 6" below water surface. Good watershed filter. Withstands frost.

Habit: Bog

Bloom Color:

Lighting: Sun or filtered

USDA Zone: 3

***Acorus calamus 'Variegatus'*****Variegated Calamus**

Hardy wetland plant, sword-shaped leaves with white, green, and burgandy stripes. Rhizomes rise above surface of soil. Medicinal qualities. Edible.

Grows 3' height. Moist soil to 6" below water surface. Good watershed filter. Withstands frost.

Habit: Bog

Bloom Color:

Lighting: Sun or filtered

USDA Zone: 3

***Acorus gramineus*****Japanese Sweet Flag**

Elegant grass-like plant with clumping, slender green leaves. Good for small water features, bowls, waterfall edge, soil retention. Edible.

Grows to 12" in height. Keep wet. Do not submerge. Good watershed filter.

Habit: Bog

Bloom Color:

Lighting: Sun or filtered

USDA Zone: 2

***Acorus gramineus 'Licorice'*****Japanese Sweet Flag 'Licorice'**

Elegant grass-like plant with clumping, slender green leaves, with strong licorice scent and flavor. Semi-evergreen. Nice for edges. Edible.

Grows to 12" in height. Keep wet. Do not submerge. Good watershed filter.

Habit: Bog

Bloom Color:

Lighting: Sun or filtered

USDA Zone: 5

***Acorus gramineus 'Ogon'*****Golden Japanese Sweet Flag**

Wide fans of grass-like foliage with rich yellow variegation. Semi-evergreen. Aromatic. Prefers cooler weather or shade. Edible.

Grows to 12" in height. Keep wet. Do not submerge. Good watershed filter.

Habit: Bog

Bloom Color:

Lighting: Sun or filtered

USDA Zone: 2

***Acorus gramineus 'Variegatus'*****Variegated Japanese Sweet Flag**

Wide fans of grass-like foliage with green and cream variegation. Semi-evergreen. Aromatic.

Good for pond edges, between stepping stones. Edible.

Grows to 12" height. Keep wet. Do not submerge. Good watershed filter.

Habit: Bog

Bloom Color:

Lighting: Sun or filtered

USDA Zone: 2

Bee Friendly - no neonicotinoids

Free of synthetic sprays/fertilizers

Irrigated with 100% recycled water

***Alisma plantago-aquatica (cn)*****Water Plantain**

Elongated green leaves. White flowers grow on a branching, long stem. Medicinal qualities.

Edible. CA native.

Must be wet at all times to stay green; summer dormant without water. Grows to 3' tall.

Habit: Bog

Bloom Color: white

Lighting: Full-Sun

USDA Zone: 6

***Alnus incana ssp tenuifolia*****Mountain Alder**

Multi-stemmed shrub or small tree. Food source for wildlife. Good for site rehab, streambank stabilization, erosion control. CA native.

Tolerates cold, low-med elevations. Rich, moist soil. Grows 20-40' tall.

Habit: Marginal

Bloom Color:

Lighting: Sun or filtered

USDA Zone: 5

***Alnus rhombifolia (cn)*****White Alder**

Deciduous riparian tree. Fast growing. Tolerates heavy soil, sun or shade, and flooding. CA native.

Grows to 40' tall. Prefers moisture. Tolerates wind.

Habit: Bog

Bloom Color:

Lighting: Sun or filtered

USDA Zone: 7

***Alocasia macrorrhizos*****Giant Elephant Ears**

Giant Taro. Giant ornamental wavy, arrow-shaped leaves on thick green stalks. Greenish-white flower, bright red seeds. Semi-tropical. Edible (caution)

Moist, well-drained soil. Grows to 7' tall and 5' wide. Many parts of plant are toxic. Cold hardy.

Habit: Landscape

Bloom Color:

Lighting: Shade

USDA Zone: 9

***Alternanthera ficoidea 'Red Threads'*****Joseph's Coat**

Bushy, water tolerant with slender, multi-colored leaves from deep purple to orange. Very small pink burgandy flowers.

Grows in a mound up to 12" tall and 14" wide. Not frost tolerant. Full sun for best color.

Habit: Marginal

Bloom Color: pink

Lighting: Sun or filtered

USDA Zone: 10

***Anemopsis californica (cn)*****Yerba Mansa**

Conic white flowers and bluish-tinged leaves. Medicinal herb. Excellent for marsh plantings and pond edges. Good in hot and cold climates. CA native.

Tolerates brackish water. Clumping groundcover. Grows 12" tall, 2-3' wide. Winter dormant.

Habit: Bog

Bloom Color: white

Lighting: Full-Sun

USDA Zone: 4

***Angelica archangelica*****Angelica**

Beautiful biennial, edible herb with glossy leaves. Puts forth a flowering stalk in second year.

Hardy.

Moisture loving. Good plant pond side. Grows to 2'-6' in second year. Reseed annually.

Habit: Landscape

Bloom Color: cream white

Lighting: Full-Sun

USDA Zone: 4

Bee Friendly - no neonicotinoids

Free of synthetic sprays/fertilizers

Irrigated with 100% recycled water

***Apocynum cannabinum (cn)*****Indian Hemp (Dogbane)**

Wild meadow plant with small white flowers in summer. Used by Native Americans for rope. CA native.

Fast growing. Grows to 3' tall. Very moist to dry soil.

Habit: Marginal      Bloom Color: white      Lighting: Sun or filtered      USDA Zone: 4

***Aponogeton distachyus*****Water Hawthorne**

Slender floating leaves with pungent white flower that rises above the water surface. Vernal pool wildflower from S. Africa. Edible.

Blooms in winter and early spring. May go dormant in summer in hot climates. Prefers direct sun

Habit: Submerged      Bloom Color: white      Lighting: Sun or filtered      USDA Zone: 4

***Artemisia douglasiana (cn)*****Mugwort**

Attractive fragrant foliage with history of medicinal uses. Leaves are green on top, silvery beneath. Indistinct flower. Good for birds. CA native.

Grows to 3' tall. Keep moist.

Habit: Marginal      Bloom Color:      Lighting: Sun or filtered      USDA Zone: 6a

***Asclepias curassavica*****Scarlet Milkweed**

Red, yellow & orange flowered perennial subshrub blooms spring to fall. Good for cut flowers.

Attracts butterflies, pollinators. Do not ingest.

Regularly irrigated soil with good drainage. Grows 3-4' tall. Dormant in winter.

Habit: Marginal      Bloom Color: red & yellow      Lighting: Sun or filtered      USDA Zone: 8b

***Asclepias fascicularis (cn)*****Narrowleaf Milkweed**

Elegant, narrow leaves, bushy, clusters of rosy-pink flowers. Butterfly food, attracts pollinators. Deer tolerant. CA native.

Tolerates moist soil & drought, garden & clay. Grows 1-3' tall. Easy to grow. Dormant in winter.

Habit: Marginal      Bloom Color: rosy-pink      Lighting: Sun or filtered      USDA Zone: 3

***Asclepias speciosa (cn)*****Showy Milkweed**

Flower clusters 4-5", pink-lavender, fragrant. Large blue-green leaves. Low toxicity. Attracts butterflies, honeybees, other pollinators. CA native.

Prefers moist soil but tolerates drought. Grows 2-3' tall. Dormant in winter.

Habit: Marginal      Bloom Color: pink-lavender      Lighting: Full-Sun      USDA Zone: 3

***Aster chilensis (cn)*****California Aster**

Vigorous native perennial covered with soft lavender daisies in summer. Attract butterflies. CA native.

Sprawling to upright. Grows 20-40" tall. Tolerate heavy watering and drought. Prune in winter.

Habit: Marginal      Bloom Color: lavender blue      Lighting: Full-Sun      USDA Zone:

Bee Friendly - no neonicotinoids

Free of synthetic sprays/fertilizers

Irrigated with 100% recycled water

***Baccharis glutinosa (cn)*****Marsh Baccharis**

Grows in salt marshes. Good nectar source. Green-brown stems and silver-green foliage, white flowers. CA native.

Grows to 3' tall. Keep moist.

Habit: Bog

Bloom Color: white

Lighting: Full-Sun

USDA Zone:

***Bacopa monniera*****Smooth Water Hyssop**

Small sprawling herb. Succulent small leaves, tiny white flowers. Good for waterfall areas and containers. Can be mowed.

Moist soil to several inches of submersion. Tolerates brackish water. Height to 6". Grows quickly.

Habit: Bog

Bloom Color: white

Lighting: Sun or filtered

USDA Zone: 8

***Baumea rubiginosa 'Variegata'*****Golden Sword Rush**

Evergreen rush. Rigid upright spiked leaves, deep green with yellow stripe along one edge. Hardy in winter.

Prefers frequent irrigation. Will grow in moist soil and partially submerged. Grows to 3' tall.

Habit: Bog

Bloom Color:

Lighting: Sun or filtered

USDA Zone:

***Billbergia nutans*****Queen's Tears**

Bromeliad with long trailing flowers and stalks that form cups. Flowers are pink and green and blue. Blooms in spring.

Grows to 24" tall. Remain evergreen in light frost. Drought and water tolerant. Good drainage.

Habit: Landscape

Bloom Color: pink, yellow, pu

Lighting: Part-Sun

USDA Zone: 8

***Billbergia nutans variegata*****Variegated Queen's Tears**

Bromeliad with long trailing flowers and variegated stalks that form cups. Flowers are pink and green and blue. Blooms in spring.

Grows to 24" tall. Remain evergreen in light frost. Drought and water tolerant. Good drainage.

Habit: Landscape

Bloom Color: pink, yellow, pu

Lighting: Part-Sun

USDA Zone: 8

***Bolboschoenus maritimus (cn)*****Seaside Bulrush**

Salt tolerant bulrush. Upright green stems. Ecologically important as wind & current buffer, reducing erosion. Provides wildlife habitat. CA native.

Grows to 5' tall. Prefers partial submersion or bog.

Habit: Bog

Bloom Color:

Lighting: Full-Sun

USDA Zone: 5

***C. glauca x C. generalis hybrid*****Yellow Ra Canna**

True water canna hybrid with bright yellow flower in summer-fall. Narrow lance-shaped blue-green leaves. Frost hardy.

Grows 4-5' in height. Prefers sunny locations. Can be submerged to 6". Frost tender.

Habit: Bog

Bloom Color: yellow

Lighting:

USDA Zone:

Bee Friendly - no neonicotinoids

Free of synthetic sprays/fertilizers

Irrigated with 100% recycled water

***C. glauca x C. x generalis hybrid*****Taney Canna**

True water canna hybrid with apricot flowers. Narrow, lance-shaped blue-green foliage. Frost hardy.

Grows 4-6' in height. Prefers sunny locations. Can be submerged to 6". Frost tender.

Habit: Bog      Bloom Color: coral orange      Lighting: Full-Sun      USDA Zone:

***C. glauca x C. x generalis hybrid*****Erebus Canna (4', salmon-pink flower)**

True water canna hybrid with pink coral flowers. Narrow, lance-shaped blue-green leaves. Frost hardy.

Grows 4-5' in height. Prefers sunny locations. Can be submerged to 6". Frost tender.

Habit: Bog      Bloom Color: coral pink      Lighting: Full-Sun      USDA Zone:

***C. glauca x C. x generalis hybrid*****Endeavor Canna (4', orange-red flower)**

True water canna hybrid with dark pink flowers. Narrow, lance-shaped blue-green leaves with red edge. Frost hardy.

Grows 4-5' in height. Prefers sunny locations. Can be submerged to 6". Frost tender.

Habit: Bog      Bloom Color: dark pink      Lighting: Full-Sun      USDA Zone:

***Caltha palustris (cn)*****Marsh Marigold**

Large round leaf, buttercup yellow flowers, first to bloom in spring. Found along streams, marshes. Attracts insects. CA native.

Clumping Grows to 8-12" height. Prefers filtered sun and moist soil. May be summer dormant.

Habit: Bog      Bloom Color: golden yellow      Lighting: Sun or filtered      USDA Zone: 3

***Caltha palustris 'Plena'*****Double Marsh Marigold**

Round green leaves with waxy texture. Yellow double button flowers. Blooms early spring and again in fall. Likes shade.

Moist boggy soil. Grows 6"-12" in height.

Habit: Bog      Bloom Color: golden yellow      Lighting: Sun or filtered      USDA Zone:

***Caltha polypetala*****Giant Marsh Marigold**

Yellow flowers atop glossy dark green foliage. Blooms early spring; cut back in summer and will bloom in fall.

Can be submerged to 6". Winter dormant. Grows 24" height. Keep moist.

Habit: Bog      Bloom Color: golden yellow      Lighting: Sun or filtered      USDA Zone: 4

***Calycanthus occidentalis (cn)*****Western Spice Bush**

Deciduous shrub with bright green foliage, red flowers with scent of wine. Grows along streams & rivers. CA native.

Likes heat. Keep moist. Grows 5-12' tall. Can be pruned as hedge or small tree.

Habit: Marginal      Bloom Color: red      Lighting: Sun or filtered      USDA Zone:

Bee Friendly - no neonicotinoids

Free of synthetic sprays/fertilizers

Irrigated with 100% recycled water

***Canna 'Florence Vaughn'*****Florence Vaughn Canna (6' tall, multi-color flower)**

Large green leaves. Purple budstems topped with orange-and-red speckled yellow flowers.

Frequent flowering. Heirloom canna.

Grows to 6' tall. Does well as aquatic or marginal.

Habit: Bog

Bloom Color: orange, yellow, Lighting: Full-Sun

USDA Zone:

***Canna 'Pink Sunburst'*****Pink Sunburst Canna (3', pink , variegated leaf)**

Short variegated canna with mulicolor leaves and pink flowers. Frequent bloomer.

Grows 2-3' tall. Prefers sunny locations. Can be submerged to 10". Brighter color in part shade.

Habit: Marginal

Bloom Color: pink

Lighting: Sun or filtered

USDA Zone:

***Canna 'Black Knight'*****Black Knight Canna (6' , red , burgundy leaf)**

Red flower with striped blue-black cast leaves. Blooms throughout summer.

Grows 4'-6' tall. Prefers sunny locations. Can be submerged to 10".

Habit: Marginal

Bloom Color: red

Lighting: Sun or filtered

USDA Zone:

***Canna 'Herb's White'*****Herb's White Canna (3', white flower)**

White plumaria-like flower with light green leaves. Small variety.

Grows 4'-6' tall. Prefers sunny locations. Can be submerged to 10".

Habit: Marginal

Bloom Color: white

Lighting: Full-Sun

USDA Zone:

***Canna 'Intrigue'*****Intrigue Canna (10', coral, burgundy leaf)**

Large long brown leaves. Delicate peach flowers. Grows well as aquatic or marginal. Very tall.

Grows 8-12' tall. Prefers sunny locations. Can be submerged to 10".

Habit: Bog

Bloom Color: peach

Lighting: Full-Sun

USDA Zone:

***Canna 'Red King Humbert'*****Red King Humbert Canna (4', red, burgundy leaf)**

Bright red flower with dark green-purple leaves. Medium size.

Grows 4'-6' tall. Prefers sunny locations. Can be submerged to 10".

Habit: Marginal

Bloom Color: red

Lighting: Sun or filtered

USDA Zone:



Bee Friendly - no neonicotinoids

Free of synthetic sprays/fertilizers

Irrigated with 100% recycled water

***Canna 'Firecracker'*****Firecracker Canna**

Plumeria like fuchsia flower on corn stalk like plant. Leave are light green edged with brown.

Grows 4'-6' tall. Prefers sunny locations. Can be submerged to 10".

Habit: Bog

Bloom Color: red

Lighting: Full-Sun

USDA Zone:

***Canna indica 'Eileen Gallo'*****Eileen Gallo Canna (4', apricot, dark veined leaf)**

Elegant pale pink and yellow (apricot) flowers. Foliage is green with red veins.

Grows 4-6' tall. Prefers sunny locations. Can be submerged to 10".

Habit: Marginal

Bloom Color: It rose

Lighting: Full-Sun

USDA Zone:

***Canna indica 'Phasion'*****Tropicanna Canna (6', orange, variegated leaf)**

Bold gold, pink, burgandy, green & orange striping on leaves. Orange flowers.

Grows 4-6' tall. Prefers sunny locations. Can be submerged to 10".

Habit: Marginal

Bloom Color: orange

Lighting: Sun or filtered

USDA Zone:

***Canna 'Pretoria'*****Pretoria Canna (6', orange, yel-gr strip leaf)**

Broad leaves with defined stripes of green and yellow. Orange flowers show above the leafy part of plant.

Grows 5'-6' tall. Prefers sunny locations. Can be submerged to 10".

Habit: Marginal

Bloom Color: orange

Lighting: Sun or filtered

USDA Zone:

***Canna 'Stuttgart'*****Stuttgart Canna**

Large stripes of white and sea-green on leaves. Pale apricot flower. Beautiful foliage plant.

Keep moist and from intense sun. Grows 8'-12'.

Habit: Bog

Bloom Color: peach

Lighting: Part-Sun

USDA Zone:

***Canna 'The President'*****The President Canna (3', red, light gr leaf)**

Showy red plumaria-like flowers on thick stalks with bright green broad leaves. Shorter variety.

Grows 4'-6' tall. Prefers sunny locations. Can be submerged to 10".

Habit: Marginal

Bloom Color: red

Lighting: Full-Sun

USDA Zone:

Bee Friendly - no neonicotinoids

Free of synthetic sprays/fertilizers

Irrigated with 100% recycled water

***Canna 'Zulu'*****Zulu Canna (3', hot pink, dk burgandy leaf)**

Bright pink flowers with short broad reddish-black leaves. Medium size. Very attractive.

Grows 2-3' tall. Prefers sunny locations.

Habit: Marginal

Bloom Color: hot pink

Lighting: Full-Sun

USDA Zone:

***Carex amplifolia (cn)*****Bigleaf Sedge**

Western native sedge with impressively large leaves and tall flowering spikes. Found in swampy meadows. CA native.

Tolerates seasonal flooding. Keep moist. Grows to 4' tall.

Habit: Bog

Bloom Color:

Lighting: Sun or filtered

USDA Zone:

***Carex aquatilis (cn)*****Water Sedge**

Sod-forming perennial sedge that stays green late into the summer. Good forage. CA native.

Requires saturated soil. Young plants can be submerged to 2" until established. Grows 6-40" tall.

Habit: Bog

Bloom Color:

Lighting: Sun or filtered

USDA Zone:

***Carex densa (cn)*****Dense Sedge**

Semi-evergreen sedge for moist meadows and woodlands. Forms small clumps. CA native.

Stays green with regular moisture. Can be slightly submerged. Grows to 1-2' tall.

Habit: Marginal

Bloom Color:

Lighting: Sun or filtered

USDA Zone:

***Carex nudata (cn)*****Black Flowering (Naked) Sedge**

Bright green dense mounding sedge. Black flowers. Dies back in winter. Good for containers. CA native.

Can be partially submerged. Grows 1-2.5' tall. Keep moist.

Habit: Bog

Bloom Color: black

Lighting: Sun or filtered

USDA Zone:

***Carex obnupta (cn)*****Slough Sedge**

Grass-like foliage with wheat-like tops, flat dark green leaves. CA native.

Tall clumping grass-like plant grows in moist boggy conditions. Height 2'-3'.

Habit: Bog

Bloom Color:

Lighting: Full-Sun

USDA Zone:

***Cephalanthus occidentalis*****Buttonbush**

Deciduous shrub good for rain gardens, attracts bees and butterflies. Perfectly round white-pink fragrant flowers, interesting year round. CA native.

Adjust to most moist soils. Grows 5-12' tall, 4-8' spread.

Habit: Marginal

Bloom Color: white

Lighting: Sun or filtered

USDA Zone: 5

Bee Friendly - no neonicotinoids

Free of synthetic sprays/fertilizers

Irrigated with 100% recycled water

***Ceratophyllum demersum* (Syn. *C. apiculatum*)****Hornwort**

Submerged, free floating, with numerous side shoots. Leaves in whorls along stems are bright green, used for spawning and protection of fry.

Stems reach lengths of 3-8'. Prefer warm water.

Habit: Floating

Bloom Color:

Lighting: Full-Sun

USDA Zone: 4

***Chondropetalum elephantinum*****Giant Cape Rush**

Dark green unbranched, segmented stems. Dark brown sheaths at joints. Clusters of brown flowers. Clumping. Male & female plants.

Grows to 4 ft. Origin South Africa. Prefers marsh habitat.

Habit: Marginal

Bloom Color:

Lighting:

USDA Zone:

***Colocasia esculenta*****Green Taro**

Large green heart-shaped leaves. Tuberous roots eaten like potatoes. More hardy than other varieties. Edible.

Semi-tropical. Prefers boggy conditions to shallow water. Enjoys humidity. Grows 3-5' tall.

Habit: Bog

Bloom Color:

Lighting: Sun or filtered

USDA Zone: 9

***Colocasia esculenta* 'Black Magic'****Black Taro**

Mature leaves are dusty purple-black on burgandy-black stalks. Frost tender.

Tropical. Can be submerged to 2". Enjoys humidity. Grows 3-5' tall.

Habit: Bog

Bloom Color:

Lighting: Sun or filtered

USDA Zone: 9

***Colocasia esculenta* 'Fontanesii'****Black-Stem Taro**

Large, heart-shaped dark green leaves on dark purple-black stalk. Good for marsh filters, pond edges, indirect light.

Tropical. Can be submerged to 2". Grows 4-6' tall. Protect from frost. Enjoys humidity.

Habit: Bog

Bloom Color:

Lighting: Sun or filtered

USDA Zone: 9

***Colocasia esculenta* 'Fontanesii'****Violet-Stem Taro**

Large, heart-shaped dark green leaves on deep purple stalk. Good for marsh filters, pond edges, indirect light.

Tropical. Can be submerged to 2". Grows 4-6' tall. Protect from frost. Enjoys humidity.

Habit: Bog

Bloom Color:

Lighting: Sun or filtered

USDA Zone: 9

***Cornus glabrata* (cn)****Brown Creek Dogwood**

Deciduous riparian shrub, brown stems and green - brown - red leaves, with creamy white flowers. Good for birds. Deer resistant. CA native.

Grows 7-10' tall. Prefers moist soil, some shade. Good restoration plant. Do not submerge.

Habit: Marginal

Bloom Color: white

Lighting: Part-Sun

USDA Zone: 7

Bee Friendly - no neonicotinoids

Free of synthetic sprays/fertilizers

Irrigated with 100% recycled water

***Cornus sericea occidentalis* (cn)****Western Redtwig Dogwood**

Riparian shrub, forming broad clumps with red stems. Small white flower and fruit. Good for birds. CA native.

Grows 15-18' tall. Prefers wetland margins. Good restoration plant. Do not submerge.

Habit: Marginal      Bloom Color: white      Lighting: Sun or filtered      USDA Zone: 5

***Cyperus alternifolius* (syn. *C. involucratus*)****Umbrella Palm**

Long strong stalks with fan of narrow leaves at the top. Clumping. Similar to papyrus. Can be grown in container.

Tall plant grows to 6'. Prefers very moist soil. Plant at water's edge.

Habit: Bog      Bloom Color:      Lighting: Sun or filtered      USDA Zone: 8

***Cyperus giganteus*****Mexican Papyrus**

Evergreen aquatic. Leafless green stems topped with umbrella of arched needle-like foliage and red-brown spikelets of flowers. Bushy.

Boggy soil. Can be submerged 0-3". Grows 8-10' tall. Frost sensitive.

Habit: Bog      Bloom Color:      Lighting: Full-Sun      USDA Zone: 9

***Cyperus isocladius* (syn. *C. prolifer*)****Dwarf Papyrus**

Delicate evergreen papyrus. Leafless thick stems end in tufts of greenish-brown flowers.

Submerge to 4". Grows to 1' tall. Frost sensitive.

Habit: Bog      Bloom Color:      Lighting: Full-Sun      USDA Zone: 9

***Cyperus papyrus*****Giant Egyptian Papyrus**

Elegant long thick stems bearing tufts of long slender leaves with small brown spikelets of flowers. Can be container grown.

Grows 7'-13' tall. Keep sheltered from wind. Rich moist soil. Frost sensitive.

Habit: Bog      Bloom Color:      Lighting: Full-Sun      USDA Zone: 8

***Cyperus percamenthus*****Little Giant Papyrus**

Dwarf size papyrus with large, thick stems. Large compact tassels. New rhizome growth has woven pattern. Can be container grown.

Boggy soil. Can be submerged 0-3". Grows 4-5' tall. Frost sensitive.

Habit: Bog      Bloom Color:      Lighting: Sun or filtered      USDA Zone: 9

***Darmera peltata* (cn)****Indian Rhubarb**

Clumps of broad, round leaves with pink flower spikes. Good for pond margins and marsh gardens. Native to mountains of N. CA.

Grows 2'-4' tall. Prefers cooler location. Keep moist.

Habit: Bog      Bloom Color: pink      Lighting: Part-Sun      USDA Zone: 5

Bee Friendly - no neonicotinoids

Free of synthetic sprays/fertilizers

Irrigated with 100% recycled water

***Echinodorus cordifolius* (syn. *E. radicans*)****Radican Sword**

Deep green elongated leaves with distinct lines when grown above water. Long stems of white flowers become new plants. Aquarium or bog plant.

Can be fully submerged. Clumping. Grows 1'-3' in height.

Habit: Emerging

Bloom Color: white

Lighting: Full-Sun

USDA Zone: 7a

***Eichhornia crassipes*****Water Hyacinth**

Orchid-like purple flower in summer. Free floating and good source of water filtration for ponds without filters.

Do not over fertilize. Keep from hard or brackish water. Prefers pH between 5.0-7.5.

Habit: Floating

Bloom Color: lavender

Lighting: Full-Sun

USDA Zone:

***Eleocharis macrostachya* (cn)****Common Spike Rush**

Perennial rush-like sedge found in moist habits. Bright green erect stems. Habitat plant. Good rain garden and border plant. CA native.

Grows to 3' tall. Keep moist. Salt tolerant. Can be slightly submerged.

Habit: Bog

Bloom Color:

Lighting: Full-Sun

USDA Zone:

***Epipactus gigantea* 'Serpentine Night' (cn)****Stream Orchid 'Serpentine Night'**

Dark burgandy leaves and stems. Flowers in spring. CA native.

Moist soil. Grows to 3' tall.

Habit: Bog

Bloom Color:

Lighting: Sun or filtered

USDA Zone:

***Epipactus gigantea* (cn)****Stream Orchid**

Dark green leaves and stems. Flowers in spring. CA native.

Moist soil. Grows to 3' tall.

Habit: Bog

Bloom Color:

Lighting: Sun or filtered

USDA Zone:

***Equisetum hyemale* (cn)****Scouring Horsetail Rush**

Ancient Fern with dark green hollow segmented stems, turns orange in cooler weather. Cone shaped spores at tips of single stems. CA native.

Grows to 3'. Prefers wet soil. Can be invasive.

Habit: Bog

Bloom Color:

Lighting: Sun or filtered

USDA Zone: 4

***Equisetum hyemale v. robustum* (cn)****Giant Scouring Horsetail Rush**

Especially tall fern, dark green hollow segmented stems, turning orange in cooler weather. Cone-shaped spores at tips of stems. CA native.

Grows to 4' or more. Prefers wet soil. Can be invasive.

Habit: Bog

Bloom Color:

Lighting: Sun or filtered

USDA Zone: 4

Bee Friendly - no neonicotinoids

Free of synthetic sprays/fertilizers

Irrigated with 100% recycled water

***Equisetum scirpoides*****Miniature Horsetail Rush**

Miniature version of common Horsetail. Evergreen and clumping. Thin bamboo-like stems with black rings at nodes. Spreads quickly.

Grows to 8" height. Medium water needs. Can be submerged to 2" . Can be invasive.

Habit: Marginal      Bloom Color:      Lighting: Sun or filtered      USDA Zone: 4

***Equisetum telmateia (cn)*****Northern Great Horsetail**

Perennial fern with green hollow segmented stems. Sterile stems branch in regular whorls; fertile stems produce spores. CA native.

Forms colonies. Prefers damp shady area. Can be invasive.

Habit: Bog      Bloom Color:      Lighting: Sun or filtered      USDA Zone: 5

***Glyceria maxima variegata*****Variegated Manna Grass**

Grassy plant. Pink tinged wheat and green colored variegated leaves.

Grows to 2' tall. Evergreen. Prefers moist soil to submersion.

Habit: Emerging      Bloom Color:      Lighting: Full-Sun      USDA Zone:

***Grindelia stricta (cn)*****Salt Marsh Gumweed**

Erect perennial or subshrub with bright yellow flowers. Easy to grow and vigorous. Attracts butterflies. CA native.

Grows to 3' tall. Tolerates seasonal flooding, salt. Deer resistant.

Habit: Marginal      Bloom Color: yellow      Lighting: Sun or filtered      USDA Zone: 7a

***Gunnera manicata*****Gunnera**

One of largest herbaceous perennials in the world. Huge leaves, thick thorny stems. Rusty red miniscule flowers grow on conical branch. Prehistoric.

Prefers boggy area. Do not submerge. Grows to 7' tall. Protect from frost.

Habit: Marginal      Bloom Color:      Lighting: Part-Sun      USDA Zone: 7

***Hedychium coronarium*****White Butterfly Ginger**

Semi-tropical hardy ginger. Sweetly scented, white, butterfly-shaped flower in late summer. Well-drained soil.

Moist soil. Grows 5-6' tall. Prefers cool sun or light shade. Evergreen in frost-free garden.

Habit: Marginal      Bloom Color: white      Lighting: Part-Sun      USDA Zone: 7

***Hedychium gardnerianum*****Kahili Ginger**

Small fragrant yellow flowers with red stamens. Leaves grow to 2' long and 6" wide. N. India Himalaya native. Well-drained soil.

Moist soil. Grows 6-8' tall. Prefers cool sun or light shade. Evergreen in frost-free garden.

Habit: Marginal      Bloom Color: yellow      Lighting: Sun or filtered      USDA Zone: 7

Bee Friendly - no neonicotinoids

Free of synthetic sprays/fertilizers

Irrigated with 100% recycled water

***Hedychium gardnerianum* 'Tara'****Tara Ginger**

Semi-tropical hardy ginger with blue-green stems and fragrant orange-red flowers. Native to Nepal. Well-drained soil.

Moist soil. Grows 6-8' tall. Prefers cool sun or light shade. Evergreen in frost-free garden.

Habit: Marginal      Bloom Color: orange      Lighting: Part-Sun      USDA Zone: 7

***Hedychium* 'Kinkaku'****Kinkaku Ginger**

Old Japanese hybrid with light pink fragrant flowers, narrow leaves. Flowers late summer. Semi tropical hardy. Well drained soil.

Moist soil. Grows 4-5' tall. Prefers cool sun or light shade. Evergreen in frost-free garden.

Habit: Marginal      Bloom Color: coral      Lighting: Sun or filtered      USDA Zone: 7

***Helenium autumnale* (cn)****Common Sneezeweed**

Large bright yellow daisies on 2-3 ft. stems. Lance-shaped green leaves. Attracts pollinators.

Does not cause hayfever! CA native.

Keep moist. Grows 2-3' tall.

Habit: Bog      Bloom Color: yellow      Lighting: Sun or filtered      USDA Zone:

***Helenium bigelovii* (cn)****Bigelow's Sneezeweed**

Golden daisy like flowers, round dome center on 2-3 ft. stems. Lance-shaped green leaves.

Attracts pollinators. Does not cause hayfever! CA native.

Keep moist. Grows 2-3' tall.

Habit: Bog      Bloom Color: yellow      Lighting: Sun or filtered      USDA Zone:

***Helenium puberulum* (cn)****Rosilla Sneezeweed**

Golden very small petals which quickly disappear to leave spherical center. Attracts pollinators.

Does not cause hayfever! CA native.

Keep moist. Grows 2-3' tall.

Habit: Bog      Bloom Color: yellow      Lighting: Sun or filtered      USDA Zone:

***Hibiscus californicus* syn. *lasiocarpus* (cn)****California Hibiscus**

Wetland hibiscus native to Sacramento River Delta. Fuzzy green leaves and broad white flowers.

Dormant in winter. Rare CA native.

Grows 3' tall. Prefers part shade and moist soil. Tolerates clay.

Habit: Bog      Bloom Color: white      Lighting: Part-Sun      USDA Zone: 4

***Hibiscus coccineus*****Scarlet Rose Mallow 'Texas Star'**

Hardy hibiscus variety native to marshes. Scarlet star-shaped flower.

Moist soil. Grows in warm weather. Dies back in winter. Grows 7-10'.

Habit: Bog      Bloom Color: red      Lighting: Full-Sun      USDA Zone:

Bee Friendly - no neonicotinoids

Free of synthetic sprays/fertilizers

Irrigated with 100% recycled water

***Hibiscus laevis*****Halberdleaf Rose Mallow**

Hardy hibiscus variety native to central and eastern North America. Large pink flower with maroon center. Attracts butterflies.

Moist, marsh soil. Grows in warm weather. Dies back in winter. Grows 3-6'. Flowers July-Oct.

Habit: Bog      Bloom Color: pink      Lighting: Full-Sun      USDA Zone:

***Hibiscus moscheutos 'Dark Pink'*****Dark Pink Moscheutos Rose Mallow**

Hardy wetland hibiscus with very large dark pink flower. Multi-stemmed and shrub-like.

Moist soil. Grows in warm weather. Dies back in winter. Grows 4-7'.

Habit: Bog      Bloom Color: dark pink      Lighting: Full-Sun      USDA Zone:

***Hibiscus moscheutos 'Red'*****Red Moscheutos Rose Mallow**

Hardy wetland hibiscus with very large red flower. Multi-stemmed and shrub-like.

Moist soil. Grows in warm weather. Dies back in winter. Grows 4-7'.

Habit: Bog      Bloom Color: dark red      Lighting: Full-Sun      USDA Zone:

***Hibiscus moscheutos 'Shell Pink'*****Shell Pink Moscheutos Rose Mallow**

Hardy wetland hibiscus with very large light pink flower. Multi-stemmed and shrub-like.

Moist soil. Grows in warm weather. Dies back in winter. Grows 4-7'.

Habit: Bog      Bloom Color: white      Lighting: Full-Sun      USDA Zone:

***Hippuris vulgaris (cn)*****Mare's Tail**

Creeping perennial herb that roots underwater. Narrow pine-tree like foliage grows above water surface. Ideal as oxygenator. CA native.

Can be submerged to 12". Grows to height of 24" above water surface.

Habit: Emerging      Bloom Color:      Lighting: Sun or filtered      USDA Zone: 4

***Hosta fortunei 'Silver Crown'*****Silver Crown Hosta Lily**

Dark green leaves with creamy white border. Lavender flowers. Good for pond side.

Moist soil, shady location. Grows 2' tall. Dormant in winter. Susceptible to snail damage.

Habit: Marginal      Bloom Color: lavender      Lighting: Shade      USDA Zone:

***Hosta 'Lemon Lime'*****Lemon Lime Hosta Lily**

Fast growing, compact, smaller hosta with lemon-lime leaves. Lavender flower. Good for edging along walkways in pond area.

Prefers moist soil and shady location. Grows 6" in height. Dormant in winter.

Habit: Marginal      Bloom Color: lavender      Lighting: Shade      USDA Zone:



Bee Friendly - no neonicotinoids

Free of synthetic sprays/fertilizers

Irrigated with 100% recycled water

***Hosta seiboldiana* 'Elegans'****Hosta Lily "Elegans"**

Large, waxy blue-green foliage with pale lavender flowers. Good for pond side.

Moist soil, shady location. Grows 2-3' tall. Dormant in winter. Susceptible to snail damage.

Habit: Marginal      Bloom Color: lavender      Lighting: Shade      USDA Zone:

***Hosta* sp.****Loyalist Hosta**

White leaves with dark green margins and pale lavender flowers.

Moist soil. Do not submerge. Grows 2-3' tall. Do not mulch. Susceptible to snail damage.

Habit: Marginal      Bloom Color: lavender      Lighting: Shade      USDA Zone:

***Hosta* sp.****Wide Brim Hosta Lily**

Light green leaves edged with yellow-green. Small in size. Lavender flowers. Good container plant.

Moist soil, shady location. Grows 2-3' tall. Dormant in winter. Susceptible to snail damage.

Habit: Marginal      Bloom Color: lavender      Lighting: Shade      USDA Zone:

***Hosta* sp.****Variegated Dwarf Hosta Lily**

Yellow edged with green center. Small in size. Lavender flowers. Good container plant.

Prefers moist soil and shady location. Grows 6" in height. Dormant in winter.

Habit: Marginal      Bloom Color: lavender      Lighting: Shade      USDA Zone:

***Hosta* sp.****Brim Cup Hosta**

Small hosta with rounded leaves, green with chartreuse/white wide margin. Pale lavender-white flowers.

Moist soil, shady location. Grows 2-3' tall. Dormant in winter. Susceptible to snail damage.

Habit: Marginal      Bloom Color: lavender-white      Lighting: Shade      USDA Zone:

***Houttuynia cordata*****Green Chameleon Plant**

Groundcover with heart-shaped leaves, light to dark green. White flowers in the summer.

Softens pond edges. Forms dense mat.

Likes damp areas, not submersion. Prefers semi-shade. Height 6"-9".

Habit: Bog      Bloom Color: white      Lighting: Sun or filtered      USDA Zone: 5

***Houttuynia cordata* 'Chamaeleon'****Variegated Chameleon Plant**

Groundcover with colorful yellow, green, and red heart shaped leaves, white flowers in the summer. Softens pond edges.

Likes damp areas, not submersion. Shade or sun, but more colorful in sun. Height 6"-9".

Habit: Bog      Bloom Color: white      Lighting: Sun or filtered      USDA Zone: 2

Bee Friendly - no neonicotinoids

Free of synthetic sprays/fertilizers

Irrigated with 100% recycled water

***Hydrocleys nymphoides*****Water Poppy**

Small oval green leaf with yellow poppy flower. Good for small ponds or shading the water.

Blooms all summer.

Must be submerged 6"-2' depth.

Habit: Submerged    Bloom Color: yellow    Lighting: Sun or filtered    USDA Zone: 7

***Hydrocotyle ranunculoides (cn)*****Floating Marsh Pennywort**

Bright green aromatic marsh plant. Long creeping stems form dense mats. Shiny, leathery round leaves. Used as a Chinese herb. CA native.

Grows in swampy areas or on water surface. 2-6" above water surface. Can be submerged.

Habit: Bog    Bloom Color:    Lighting: Sun or filtered    USDA Zone:

***Hydrocotyle verticillata (cn)*****Little Umbrellas Pennywort**

Creeping plant with round, deep green, umbrella-like foliage and umbel of white flowers. CA native.

Boggy moist soil to full submersion. Grows 2-3" in height.

Habit: Bog    Bloom Color:    Lighting: Sun or filtered    USDA Zone:

***Hymenocallis lirisme*****Spider Lily**

Amazing white star flower that blooms suddenly then disappears. Foliage looks similar to sagittaria - long narrow leaves. U.S. native.

Moist soil. Grows 2-3' tall.

Habit: Bog    Bloom Color: white    Lighting: Sun or filtered    USDA Zone:

***Iris ensata 'Anytus'*****Anytus Japanese Iris**

Beardless perennial iris that prefers wet, acidic soil. Ivory white flowers. Very striking. Plant at water edge.

Keep moist. Prefers rich, slightly acidic soil. Grows to 2-4' tall. Keep crown above water line.

Habit: Marginal    Bloom Color: white    Lighting: Full-Sun    USDA Zone: 4

***Iris ensata 'Rose Queen'*****Rose Queen Japanese Iris**

Beardless perennial iris that prefers wet, acidic soil. Rose-pink flowers with darker veins and yellow-green signals. Plant at water edge.

Keep moist. Prefers rich, slightly acidic soil. Grows to 2-3' tall. Keep crown above water line.

Habit: Marginal    Bloom Color: pink    Lighting: Full-Sun    USDA Zone: 4

***Iris ensata sp.*****Purple & White Japanese Iris**

Beardless perennial iris that prefers wet, acidic soil. Purple and white petals with sword-like foliage. Plant at water edge.

Keep moist. Prefers rich, slightly acidic soil. Grows to 2-4' tall. Keep crown above water line.

Habit: Marginal    Bloom Color: purple & white    Lighting: Full-Sun    USDA Zone: 4

Bee Friendly - no neonicotinoids

Free of synthetic sprays/fertilizers

Irrigated with 100% recycled water

***Iris ensata* sp.****Dark Purple Japanese Iris**

Beardless perennial iris that prefers wet, acidic soil. Purple flower with sword-like foliage. Plant at water edge.

Keep moist. Prefers rich, slightly acidic soil. Grows to 2-4' tall. Keep crown above water line.

Habit: Marginal      Bloom Color: dark purple, blue      Lighting: Full-Sun      USDA Zone: 4

***Iris ensata* sp.****Lavender-Pink & White Japanese Iris**

Beardless perennial iris that prefers wet, acidic soil. Light pink-lavender flower with sword-like foliage. Plant at water edge.

Keep moist. Prefers rich, slightly acidic soil. Grows to 2-4' tall. Keep crown above water line.

Habit: Marginal      Bloom Color: pink-lavender,      Lighting: Full-Sun      USDA Zone: 4

***Iris ensata* sp.****Lavender-Blue & White Japanese Iris**

Beardless perennial iris that prefers wet, acidic soil. Light blue-lavender flower with sword-like foliage. Plant at water edge.

Keep moist. Prefers rich, slightly acidic soil. Grows to 2-4' tall. Keep crown above water line.

Habit: Marginal      Bloom Color: blue-lavender,      Lighting: Full-Sun      USDA Zone: 4

***Iris giganticaerulea alba*****Her Highness Louisiana Iris**

Sword like foliage with white flowers, yellow centers. Multiple blooms. Aquatic native to N. Am.

Prefers moist soil. Grows 2'-3' height. Can be submerged 4-6".

Habit: Bog      Bloom Color: white      Lighting: Full-Sun      USDA Zone: 5

***Iris laevigata* 'Variegata'****Variegated Japanese Water Iris**

Kakitsubata iris. Beardless perennial iris that prefers shallow water. Variegated foliage with purple flower. Flowers for months.

Keep moist. Prefers rich, slightly acidic soil. Grows to 2-4' tall. Can be submerged to 3".

Habit: Bog      Bloom Color: blue-purple      Lighting: Full-Sun      USDA Zone: 4

***Iris longipetala* (cn)****Coast Iris**

Uncommon CA native restricted to swales and moist areas in coastal grasslands from San Francisco to Monterey. Bluish-green leaves. CA native.

Prefers moist soil. Clumping, Grows 20' tall.

Habit: Bog      Bloom Color: lavender-blue      Lighting: Sun or filtered      USDA Zone: 3

***Iris louisiana* 'Ann Chowning'****Ann Chowning Louisiana Iris**

Beautiful maroon red flowers, with yellow markings in center. Multiple blooms. Aquatic native to N. Am.

Prefers moist soil. Grows 2'-3' height. Can be submerged 4-6".

Habit: Bog      Bloom Color: maroon      Lighting: Full-Sun      USDA Zone: 5

Bee Friendly - no neonicotinoids

Free of synthetic sprays/fertilizers

Irrigated with 100% recycled water

***Iris louisiana 'Beale Street'*****Beale Street Louisiana Iris**

Ruffled dark blue flower with dark veins and pale yellow signals. 5-6 buds per stalk. Aquatic native to N. Am.

Prefers moist soil. Grows 40-44" height. Can be submerged 4-6".

Habit: Bog

Bloom Color: blue

Lighting: Full-Sun

USDA Zone: 5

***Iris louisiana 'Black Gamecock'*****Black Gamecock Louisiana Iris**

Dark purple-black, velvety flowers. Golden marking in center. Aquatic native to N. Am.

Prefers moist soil. Grows 1.5'-3' height. Can be submerged 4-6".

Habit: Bog

Bloom Color: deep purple

Lighting: Full-Sun

USDA Zone: 5

***Iris louisiana 'Broad Daylight'*****Broad Daylight Louisiana Iris**

Early blooming with broad rich-yellow flowers, gold signals, and lighter yellow standards. Aquatic native to N. Am.

Prefers moist soil. Grows 2-3.5' height. Can be submerged 4-6".

Habit: Bog

Bloom Color: yellow

Lighting: Full-Sun

USDA Zone: 5

***Iris louisiana 'Colorific'*****Colorific Louisiana Iris**

Bi-color with both bright lavender and white petals, yellow centers. Aquatic native to N. Am.

Prefers moist soil. Grows 2'-3' height. Can be submerged 4-6".

Habit: Bog

Bloom Color: purple &amp; white

Lighting: Full-Sun

USDA Zone: 5

***Iris louisiana 'Handmaiden'*****Handmaiden Louisiana Iris**

Dark pink petals with bright yellow veins and center. Aquatic native to N. Am.

Prefers moist soil. Grows 2'-3' height. Can be submerged 4-6".

Habit: Bog

Bloom Color: maroon &amp; gold

Lighting: Full-Sun

USDA Zone: 5

***Iris louisiana 'Honey Jumble'*****Honey Jumble Louisiana Iris**

Spanish orange with ruffled petals, darker veins, yellow signal. Aquatic native to N. Am.

Prefers moist soil. Grows 40" height. Can be submerged 4-6".

Habit: Bog

Bloom Color: orange

Lighting: Full-Sun

USDA Zone: 5

***Iris louisiana 'Purple Knockout'*****Purple Knockout Louisiana Iris**

Sword like foliage with intense purple flowers, yellow centers. Multiple blooms. Aquatic native to N. Am.

Prefers moist soil. Grows 2'-3' height. Can be submerged 4-6".

Habit: Bog

Bloom Color: purple

Lighting: Full-Sun

USDA Zone: 5

Bee Friendly - no neonicotinoids

Free of synthetic sprays/fertilizers

Irrigated with 100% recycled water

***Iris louisiana 'Purple Ruffles'*****Purple Ruffles Louisiana Iris**

Ruffled deep dark purple flower with pale yellow signals. 5-6 buds per stalk. Aquatic native to N. Am.

Prefers moist soil. Grows 40-44" height. Can be submerged 4-6".

Habit: Bog      Bloom Color: deep purple      Lighting: Full-Sun      USDA Zone: 5

***Iris pseudata 'Kurokawa-noh'*****Kurokawa-noh Iris**

Striking mulberry red eye pattern on light rose falls; purple styles. Hybrid I. pseudacorus and I. ensata. 3-4 branches, 10-16 buds.

Moist soil. Can be submerged. Grows 3-5' tall. Frost hardy non-invasive (sterile).

Habit: Bog      Bloom Color: burgandy      Lighting: Full-Sun      USDA Zone: 4

***Iris sibirica 'Roryu'*****Siberian Iris 'Roryu'**

Beardless perennial iris that prefers moist soil. Antique yellow flowers with red veins. Plant at water's edge.

Keep moist. Keep crown above water line. Grows to 40-43" tall.

Habit: Marginal      Bloom Color: antique yellow      Lighting: Full-Sun      USDA Zone: 4

***Iris spuria*****Sunrise in Sonora Iris**

Tall and vigorous plant with long, erect grey-green leaves and stems. Deep maroon-purple flower merging into yellow.

Prefers moist, well-drained soil. Grows to 44" tall.

Habit: Marginal      Bloom Color: maroon, yellow      Lighting: Sun or filtered      USDA Zone: 7

***Iris versicolor 'Mysterious Monique'*****Mysterious Monique Water Iris**

Velvety royal purple with white veins and yellow accents. Tall stems.

Grows 30" tall. Keep moist. Can be submerged to 4". Rhizome is toxic.

Habit: Bog      Bloom Color: purple      Lighting: Sun or filtered      USDA Zone: 3

***Iris versicolor sp.*****Harlequin Blue Flag Iris**

Beautiful wide leaf with tints of blue. Deep lavender flower, blooms late spring and summer.

Thrives in wetland habitats. Clumping.

Grows 2'-3' tall. Keep moist, tolerates drought. Can be submerged to 4". Rhizome is toxic.

Habit: Bog      Bloom Color: deep blue      Lighting: Sun or filtered      USDA Zone: 3

***Juncus balticus (cn)*****Baltic Rush**

Riparian clumping rush with dark green, narrow stems, numerous rhizomes. Good erosion control. CA native.

Grows to 3' tall. Tolerates sand, clay, no drainage and seasonal flooding, and brackish water.

Habit: Bog      Bloom Color:      Lighting: Sun or filtered      USDA Zone:

Bee Friendly - no neonicotinoids

Free of synthetic sprays/fertilizers

Irrigated with 100% recycled water

***Juncus effusus (cn)*****Soft Rush**

Dark green foliage with seedy flower clumps in spring. Evergreen with round stems & brown flowers in summer. Drought tolerant. CA native.

Grows 2'-3' tall. Keep soil moist. Clumping.

Habit: Bog

Bloom Color:

Lighting: Sun or filtered

USDA Zone:

***Juncus inflexus 'Afro'*****Blue Medusa Rush**

Corkscrew rush with tightly twisting and spiraling leaves. Powdery blue-green in color. Tolerates drought.

Clumping. Moist soil to 3" submersion. Grows 12-18" tall, 2' wide. Tolerates cooler temp & droug

Habit: Bog

Bloom Color: brown

Lighting: Sun or filtered

USDA Zone:

***Juncus inflexus 'Unicorn'*****Unicorn Corkscrew Rush**

Corkscrew rush with long twisting and spiraling leaves.

Clumping. Moist soil to 3" submersion. Grows 12-18" tall, 2' wide. Tolerates cooler temperatures.

Habit: Bog

Bloom Color: brown

Lighting: Sun or filtered

USDA Zone:

***Juncus lescurii (cn)*****Salt Rush**

Dark green stemmed rush, grows in freshwater and salt marshes and near sand dunes. Can be found in clumps or single stems. CA native.

Grows 2'-3' tall. Keep soil moist. Clumping.

Habit: Bog

Bloom Color:

Lighting: Full-Sun

USDA Zone:

***Juncus patens (cn)*****California Gray Rush**

Evergreen with blue-grey spines and brown seedy flower. Clumping. Native to U.S. west coast. Clumping. CA native.

Tolerates most conditions. Can be submerged to 4". Sun for flowering. Height 18"-30".

Habit: Bog

Bloom Color:

Lighting: Sun or filtered

USDA Zone:

***Juncus xiphooides (cn)*****Irisleaf Rush**

Interesting sculptured rush with wide blades and flowers clumps appearing like iris blooms. CA native.

Keep moist. Grows to 2' tall.

Habit: Bog

Bloom Color:

Lighting: Full-Sun

USDA Zone:

***Lemna minor (cn)*****Duckweed**

Floating aquatic plant -one of the smallest of all flowering plants! Forms carpet of green on water surface. Good food source for wildlife. CA native.

Must be in water at all times.

Habit: Floating

Bloom Color:

Lighting: Full-Sun

USDA Zone:

Bee Friendly - no neonicotinoids

Free of synthetic sprays/fertilizers

Irrigated with 100% recycled water

***Lobelia laxiflora*****Mexican Lobelia**

Bright-colored lobelia that endures both bog and fairly drought conditions. Nearly ever blooming in coastal areas. Deer resistant.

Grows to 2' tall. Prefers moist soil. Cut back annually.

Habit: Marginal      Bloom Color: orange & red      Lighting: Full-Sun      USDA Zone: 9

***Lobelia siphilitica*****Blue Lobelia**

Green foliage, deep blue flower. Used by Iroquois as herb. Attracts bumblebees.

Grows vertically 1'-4' in height. Moist soil.

Habit: Marginal      Bloom Color: blue      Lighting: Part-Sun      USDA Zone: 3

***Lobelia siphilitica alba*****White Lobelia**

Short-lived perennial that forms rosettes of new plants from the base. Does well in ditches & streams. Attracts butterflies.

Moist soil. Do not submerge. Will self sow. Do not mulch.

Habit: Marginal      Bloom Color: white      Lighting: Full-Sun      USDA Zone: 3

***Lonicera involucrata (cn)*****Twinberry Honeysuckle**

Riparian deciduous shrub with beautiful red, purple and yellow flowers followed by black shiny fruit, edible but bitter. CA native.

Keep moist. Grows 6-10' tall. Very shade tolerant.

Habit: Marginal      Bloom Color: purple, red      Lighting: Part-Sun      USDA Zone: 4

***Lysimachia nummularia*****Green Creeping Jenny**

Creeping, low-growing with round, bright lime-green leaves. Excellent plant for spilling over walls and waterfall area.

Prefers shallow water or damp areas. 2-3 inches tall.

Habit: Bog      Bloom Color: yellow      Lighting: Sun or filtered      USDA Zone:

***Lysimachia nummularia 'Aurea'*****Golden Creeping Jenny**

Creeping, low-growing with round, bright green leaves. Excellent plant for spilling over walls and waterfall area. Deer resistant.

Prefers shallow water or damp areas. 2-4" tall, 2-3' wide.

Habit: Bog      Bloom Color: yellow      Lighting: Sun or filtered      USDA Zone: 4

***Lysimachia punctata*****Golden Candles**

Upright stems covered with green small round leaves. Bright yellow flowers grow at base of leaves in summer.

Grows 18-24" height. Dormant in winter. Moist soil.

Habit: Bog      Bloom Color: yellow      Lighting: Sun or filtered      USDA Zone:

Bee Friendly - no neonicotinoids

Free of synthetic sprays/fertilizers

Irrigated with 100% recycled water

***Lysimachia punctata 'Alexander'*****Variegated Golden Candles**

Upright stems covered with white, pink, and green small round leaves. Bright yellow flowers grow at base of leaves in summer.

Grows 18-24" height. Dormant in winter. Moist soil.

Habit: Bog

Bloom Color: yellow

Lighting: Sun or filtered

USDA Zone:

***Marsilea mutica\******Four Leaf Water Clover (Rainbow Nardoo)**

Four-leaf aquatic clover with green, red-brown patterns. Leaves float on surface of water and rise slightly above. Can be invasive.

Plant 4"-9" below water surface. Prefers rich soil. Cold Hardy.

Habit: Bog

Bloom Color:

Lighting: Sun or filtered

USDA Zone: 6

***Mentha aquatica*****Water Mint**

Ornamental aquatic mint with pale lavender flowers, bright green leaves. Aromatic and edible.

Moist soil to 4" below water surface. Low growing, sprawling. Frost tolerant.

Habit: Bog

Bloom Color: blue

Lighting: Sun or filtered

USDA Zone: 2

***Mentha spicata*****Kentucky Colonel Spearmint**

Fragrant edible herb with crinkly bright green leaves. Easy to start from cuttings. Aromatic.

Grows in clumps at water edge. Height 1-2 ft.

Habit: Marginal

Bloom Color: white

Lighting: Sun or filtered

USDA Zone:

***Menyanthes trifoliata (cn)*****Bog Bean**

Flowers stalks and leaves rise above water surface. Creeping rhizomes form colonies at pond edge. Star-shaped, hairy white flowers. CA native.

Prefers acidic, peaty soil. Grows to 12" tall. Submerge to 3".

Habit: Emerging

Bloom Color: white

Lighting: Sun or filtered

USDA Zone: 3

***Mimulus cardinalis (cn)*****Cardinal Monkeyflower**

Robust perennial tubular red flowers attract hummingbirds and other pollinators. CA native.

Keep moist. Grows to 2' tall and wide. Trim after first bloom and will bloom again.

Habit: Marginal

Bloom Color: red

Lighting: Sun or filtered

USDA Zone:

***Mimulus guttatus (cn)*****Seep Monkey Flower**

Riparian wildflower. Grows along streams. Forms mats of foliage topped with flowering stems of cheerful bright yellow tubular flowers. CA native.

Regular water to slightly submerged. Free flowering spring-summer. Grows from seed.

Habit: Bog

Bloom Color: yellow

Lighting: Sun or filtered

USDA Zone: 6



Bee Friendly - no neonicotinoids

Free of synthetic sprays/fertilizers

Irrigated with 100% recycled water

***Myosotis scorpioides (syn. Myosotis palustris)*****Water Forget Me Not**

Dainty blue flowers with yellow centers. Light green foliage. Spreads rapidly. Hardy.

Keep moist. Do not submerge. 12"-24" tall. Filtered sun.

Habit: Bog

Bloom Color:

Lighting: Part-Sun

USDA Zone:

***Myriophyllum aquaticum\******Parrot's Feather**

Fern-like feathery foliage. Good for small ponds for texture and as oxygenator. Can be invasive - do not release in wild. Tolerates brackish water.

Invasive. Grows quickly. Height 3-8" above water. Must be in water at all times. Trim often.

Habit: Emerging

Bloom Color:

Lighting: Full-Sun

USDA Zone: 6

***Myriophyllum brasiliensis 'red stem'\******Dwarf Red-Stem Parrot's Feather**

Delicate fern-like feathery foliage with red stems. Good for small ponds for texture and as oxygenator. Can be invasive - do not release in wild.

Slower growing than M.aquaticum. Height 3-6" above water. Must be in water at all times.

Habit: Emerging

Bloom Color:

Lighting: Full-Sun

USDA Zone: 6

***Myriophyllum pinnatum*****Brown Foxtail**

Feathery plant with strong stems. Leaves clustered with brown and orange tones. Can serve as oxygenator when submerged.

Keep moist at all times. Can be submerged 1-2'. Overflows from pond. Tolerates brackish water.

Habit: Emerging

Bloom Color:

Lighting: Full-Sun

USDA Zone: 4

***Nasturtium officinale (cn)*****Water Cress**

Fast growing aquatic or semi-aquatic herb. Edible. CA native.

Keep moist. Can be partially submerged or used as ground cover.

Habit: Floating

Bloom Color: white

Lighting: Sun or filtered

USDA Zone: 3

***Nelumbo nucifera*****Sacred Lotus - LARGE**

Classic single petaled large lotus, with red-pink flowers. Various cultivars are included in this category.

Keep tubers below water surface. Small plant. Submerge 3"-2ft. Rich soil. Dormant in winter.

Habit: Submerged

Bloom Color: pink

Lighting: Full-Sun

USDA Zone:

***Nelumbo nucifera 'Dajinbian'*****Da Jin Bian Lotus - LARGE**

Medium hardy lotus with white ruffled multi-petaled flowers. Multiple blooms.

Keep tubers below water surface. Small plant. Submerge 3"-2ft. Rich soil. Dormant in winter.

Habit: Submerged

Bloom Color: white

Lighting: Full-Sun

USDA Zone:

Bee Friendly - no neonicotinoids

Free of synthetic sprays/fertilizers

Irrigated with 100% recycled water

***Nelumbo nucifera* 'Mrs. Perry Slocum'****Mrs. Perry Slocum Lotus - LARGE**

Large sized hardy lotus with changeable blooms from pink, creamy yellow, to crimson blush.

Large leaves. Flowers stand above water surface.

Keep tubers below water surface. 2-3' height. Submerge 3"-2ft. Rich soil. Dormant in winter.

Habit: Submerged Bloom Color: changeable Lighting: Full-Sun USDA Zone: 5

***Nelumbo nucifera* sp****Yellow Bird Lotus - LARGE**

Large hardy lotus with warm yellow flowers and deep green leaves. Hybrid of native American lotus, *N. lutea*. Single petaled flower. Grows to 5' tall.

Keep tubers below water surface. Small plant. Submerge 3"-2ft. Rich soil. Dormant in winter.

Habit: Submerged Bloom Color: yellow Lighting: Full-Sun USDA Zone:

***Nuphar lutea ssp polysepala* (cn)****Spadderdock**

Large-leaved aquatic perennial, bright yellow blossoms. Seeds were used for flour & popcorn.

Release alcohol, not CO<sub>2</sub>, when absorbing O<sub>2</sub>. CA native.

Grows in shallow water to 3' deep. Must be partially submerged.

Habit: Submerged Bloom Color: yellow Lighting: Sun or Shade USDA Zone:

***Nymphaea* 'Barbara Dobbins'****Barbara Dobbins Waterlily**

Flowers yellow & pink blush to shades of apricot, held above water surface. Dark green speckled leaves. Spread 5'-7'. Prefers warm water.

Minimum 6 hrs. direct sunlight for blooming. Grow in 6"-18" water. Re-pot annually. Hardy.

Habit: Submerged Bloom Color: changeable Lighting: Full-Sun USDA Zone: 3

***Nymphaea* 'Colorado'****Colorado Waterlily**

Salmon-pink flowers above water surface. Mottled leaves. Free flowering. Does well in cooler water. Flower 5-6"; spread 3-5'.

Minimum 6 hrs. direct sunlight for blooming. Grow in 6"-18" water. Re-pot annually. Hardy.

Habit: Submerged Bloom Color: peach Lighting: Sun or filtered USDA Zone: 3

***Nymphaea* 'Comanche'****Comanche Waterlily**

Changeable yellow-apricot flowers, held above water surface. Free flowering. Green leaves.

Spread 4-5'. Medium to large variety.

Minimum 6 hrs. direct sunlight for blooming. Grow in 6"-18" water. Re-pot annually. Hardy.

Habit: Submerged Bloom Color: changeable Lighting: Full-Sun USDA Zone: 3

***Nymphaea* 'Conqueror'****Conqueror Waterlily**

Deep red inner petals and pink outer petals. Flower 7-8". Slightly fragrant. Deep green leaves slightly bronzed. Spread 5'. Hardy.

Minimum 6 hrs. direct sunlight for blooming. Grow in 6"-18" water. Re-pot annually. Hardy.

Habit: Submerged Bloom Color: red blush Lighting: Full-Sun USDA Zone: 3

Bee Friendly - no neonicotinoids

Free of synthetic sprays/fertilizers

Irrigated with 100% recycled water

***Nymphaea 'Hermine'*****Hermine Waterlily**

Small variety with tulip-shaped white blooms. Leaves dark green with plum. Spread 2-3'. Good for tub gardens and small ponds.

Minimum 6 hrs. direct sunlight for blooming. Grow in 6"-18" water. Re-pot annually. Hardy.

Habit: Submerged    Bloom Color: pure white    Lighting: Full-Sun    USDA Zone: 3

***Nymphaea 'Hollandia'*****Hollandia Waterlily**

Large double frosty pink flowers on water surface. Green leaves. Slightly fragrant; can be used as cut flowers. Flower 6-7"; spread 4-5'.

Minimum 6 hrs. direct sunlight for blooming. Grow in 6"-18" water. Re-pot annually. Hardy.

Habit: Submerged    Bloom Color: light pink    Lighting: Full-Sun    USDA Zone: 3

***Nymphaea 'Joey Tomocik'*****Joey Tomocik Waterlily**

Lemon-yellow blossoms. Mottle leaves. Long flowering season. Flowers above water surface. Flowers 4-5"; Spread 4-5'. Prefers warmer water.

Minimum 6 hrs. direct sunlight for blooming. Grow in 6"-18" water. Re-pot annually. Hardy.

Habit: Submerged    Bloom Color: bright yellow    Lighting: Full-Sun    USDA Zone: 3

***Nymphaea 'Mangkala Ubol'*****Mangkala Ubol Waterlily**

Medium sized plant, slightly aromatic peach and yellow flowers, dark green with burgandy leaves. Long blooming season. Spread 3-6', flower 4-6".

Minimum 6 hrs. direct sunlight for blooming. Grow in 6-36" water. Re-pot annually. Hardy.

Habit: Submerged    Bloom Color: peachy yellow    Lighting: Sun or filtered    USDA Zone: 3

***Nymphaea 'Mayla'*****Mayla Waterlily**

Large & open flowers, orange stamens, float on water surface. Fragrant. Flower 5-6". Spread 6-8'.

Minimum 6 hrs. direct sunlight for blooming. Grow in 6-36" water. Re-pot annually. Hardy.

Habit: Submerged    Bloom Color: fushia    Lighting: Full-Sun    USDA Zone:

***Nymphaea 'Meteor'*****Rembrandt Waterlily**

Wine-red flowers with white tips. Copper-green colored leaves. Floats on water surface. Slightly fragrant. Flower 5-6"; spread 4-6'.

Minimum 6 hrs. direct sunlight for blooming. Grow in 6"-18" water. Re-pot annually. Hardy.

Habit: Submerged    Bloom Color: red blush    Lighting: Part-Sun    USDA Zone: 3

***Nymphaea 'Odorata Sulphurea Grandiflora'*****Sunrise Yellow Waterlily**

Star-shaped large yellow flowers with dark yellow stamens. Need warmth to develop large blooms. Good in earth bottom pond. Spread 4-5'.

Minimum 6 hrs. direct sunlight for blooming. Grow in 6"-18" water. Re-pot annually. Hardy.

Habit: Submerged    Bloom Color: yellow    Lighting: Full-Sun    USDA Zone: 3

Bee Friendly - no neonicotinoids

Free of synthetic sprays/fertilizers

Irrigated with 100% recycled water

***Nymphaea 'Perry's Dbl White'*****Perry's Double White Waterlily**

Striking white, fully double blooms. Free flowering. New leaves bronze, maturing to green. Spread 4-5'. Better in large container.

Minimum 6 hrs. direct sunlight for blooming. Grow in 6"-18" water. Re-pot annually. Hardy.

Habit: Submerged Bloom Color: pure white Lighting: Full-Sun USDA Zone: 3

***Nymphaea sp.*****Perry's Almost Black Waterlily**

Medium-large plant with dark red peony shaped flower nearly black at the center. Dark green leaves. Good bloomer. Spread 3.5-5'. Flower 5-6".

Minimum 6 hrs. direct sunlight for blooming. Grow in 6-36" water. Re-pot annually. Hardy.

Habit: Submerged Bloom Color: red Lighting: Full-Sun USDA Zone:

***Nymphaea sp.*****Black Princess Waterlily**

Large hardy water lily with deep reddish-black peony shaped flower. Dark green leaves. Good bloomer. Spread 3.5-5'. Flower 5-6".

Minimum 6 hrs. direct sunlight for blooming. Grow in 6-36" water. Re-pot annually. Hardy.

Habit: Submerged Bloom Color: Lighting: Full-Sun USDA Zone:

***Nymphaea 'Sribangpra'*****Sribangpra Waterlily**

Yellow pointy petals with peach tint on edges. Mottled leaves. Spread 4-6'. Prolific bloomers.

Minimum 6 hrs. direct sunlight for blooming. Grow in 6"-18" water. Re-pot annually. Hardy.

Habit: Submerged Bloom Color: bright yellow Lighting: Full-Sun USDA Zone: 4

***Nymphaea 'Texas Dawn'*****Texas Dawn Waterlily**

Inner petals rich yellow, outer petals blushed pink. Leaves green on top, purple underside. Fragrant. Prefers warm water.

Minimum 6 hrs. direct sunlight for blooming. Grow in 6"-18" water. Re-pot annually. Hardy.

Habit: Submerged Bloom Color: yellow-pink Lighting: Full-Sun USDA Zone: 3

***Nymphaea 'Virginalis'*****Virginalis Waterlily**

Small-med water lily. Free flowering with fragrant white cup-shaped flowers, yellow stamens. Leaves turn burgandy to green. Spread 3-4'. Flower 4-6".

Minimum 6 hrs. direct sunlight for blooming. Grow in 6"-18" water. Re-pot annually. Hardy.

Habit: Submerged Bloom Color: pure white Lighting: Full-Sun USDA Zone: 3

***Nymphaea x marliacea 'Carnea'*****Carnea Waterlily**

Soft pink on edges of white flowers. Painted by Monet. Good for small or mid-sized tubs. New leaves purple, maturing to dark green. 4-5' spread.

Minimum 6 hrs. direct sunlight for blooming. Grow in 6"-18" water. Re-pot annually. Hardy.

Habit: Submerged Bloom Color: pink-white Lighting: Full-Sun USDA Zone: 3

Bee Friendly - no neonicotinoids

Free of synthetic sprays/fertilizers

Irrigated with 100% recycled water

***Nymphaea x marliacea 'Chromatella'*****Chromatella Waterlily**

Light yellow fragrant flowers. Dark green leaves. Spread of 2-3'. Free flowering. Good for all sizes of tubs.

Minimum 6 hrs. direct sunlight for blooming. Grow in 6"-18" water. Re-pot annually. Hardy.

Habit: Submerged    Bloom Color: yellow    Lighting: Full-Sun    USDA Zone: 3

***Nymphaea x marliacea 'Rosea'*****Rosea Waterlily**

Large plant, with classic pink flower. Good bloomer. Spread 3-6'. Flower 5".

Minimum 6 hrs. direct sunlight for blooming. Grow in " water. Re-pot annually. Hardy.

Habit: Submerged    Bloom Color: pink    Lighting: Full-Sun    USDA Zone:

***Nymphaea 'Yellow Pygmy'*****Yellow Pygmy Waterlily**

Small variety with soft yellow flower. Mottled leaves. Good for small to medium tubs. One of the oldest waterlily hybrids. Good bloomer.

Minimum 6 hrs. direct sunlight for blooming. Grow in 6"-18" water. Re-pot annually. Hardy.

Habit: Submerged    Bloom Color: yellow    Lighting: Full-Sun    USDA Zone: 4

***Nymphoides crenata*****Water Snowflake - Yellow**

Small yellow fringed flower stands above water surface. Heart-shaped red and green leaves.

Free flowering. Keep from water spray.

Prefers warm, still or slowly flowing water. Frost tolerant. Submerge to 2'.

Habit: Submerged    Bloom Color: yellow    Lighting: Full-Sun    USDA Zone: 5

***Nymphoides indica*****Water Snowflake - White**

Small white fringed flower stands above water surface. Green glossy leaves. Free flowering.

Keep from water spray.

Prefers warm, still or slowly flowing water. Submerge to 2'. Semi-tropical.

Habit: Submerged    Bloom Color: white    Lighting: Full-Sun    USDA Zone: 8

***Nymphoides peltata*****Floating Heart**

Wavy heart-shaped leaves, purple edges & underside. Butter-yellow flowers. Easily controlled in most artificial pond settings.

Must be submerged 6"-2' depth. Everygreen.

Habit: Submerged    Bloom Color: yellow    Lighting: Sun or filtered    USDA Zone: 5

***Oenanthe javanica*****Green Water Celery**

Edible aquatic with serrated green foliage similar to celery leaves. Red stems. Good Koi food.

Filtration plant.

Submerge or very wet soil. Grows to 6" tall. Prefers cooler climates. Prune often.

Habit: Bog    Bloom Color:    Lighting: Sun or filtered    USDA Zone: 7

Bee Friendly - no neonicotinoids

Free of synthetic sprays/fertilizers

Irrigated with 100% recycled water

***Oenanthe javanica* 'Flamingo'****Variegated Water Celery**

Edible aquatic with serrated multicolored white pink and green foliage similar to celery leaves.

Good Koi food. Filtration plant.

Submerge or very wet soil. Grows to 6" tall. Prefers cooler climates. Prune often.

Habit: Bog

Bloom Color:

Lighting: Sun or filtered

USDA Zone: 7

***Oenanthe sarmentosa* (cn)****Pacific Water Parsley**

Variety of water celery. Clumping groundcover with stalks of small white flowers. CA native.

Keep moist. Groundcover.

Habit: Bog

Bloom Color: white

Lighting: Sun or filtered

USDA Zone:

***Phalaris arundinacea* 'Dwarf Garters''****Dwarf Ribbon Grass**

Low-growing grass with vertically striped green and cream foliage. Clumping groundcover, borders, or in containers. Cut back in spring.

Prefers moist, well-drained soil, tolerates dry or poor soils. Grows 12-15" tall. N. Am. native.

Habit: Marginal

Bloom Color:

Lighting: Sun or filtered

USDA Zone: 4

***Phalaris arundinacea* 'Picta Rosa'****Pink Ribbon Grass**

Variegated aquatic grass with green and creamy white stripes and pink highlights.

Moist soil. Grows to 2' tall.

Habit: Bog

Bloom Color:

Lighting: Sun or filtered

USDA Zone:

***Phyla nodiflora* (cn)****Texas Frog Fruit**

Rambling ground cover. Tolerates drought and flooding. Soft green leaves, pinkish flowers.

Attracts butterflies. CA native.

Keep from frost. Usually found in wetlands. Sprawling.

Habit: Marginal

Bloom Color: pink

Lighting: Full-Sun

USDA Zone:

***Pinellia ternata*****Crowdipper Plant**

Dark green tri-lobed leaf with long protruding spadix. Rare medicinal herb native to Asia. Can be invasive.

Grows 6-8" tall. Self-seeding. Prefers moist soil and filtered sunlight.

Habit: Bog

Bloom Color:

Lighting: Part-Sun

USDA Zone:

***Pistia stratiotes*****Water Lettuce**

Floating plant with rigid, succulent-like light dull green leaves covered with small hairs. Looks like open head of floating lettuce. No leaf stalks.

Protect from frost. Invasive in warm climates.

Habit: Floating

Bloom Color:

Lighting: Part-Sun

USDA Zone:

Bee Friendly - no neonicotinoids

Free of synthetic sprays/fertilizers

Irrigated with 100% recycled water

***Pontederia cordata*****Blue Pickerel**

Large, heart-shaped shiny green leaves, spike of small violet-blue flowers. Clumping. Good filtration plant. Attracts frogs and dragonflies.

Submerge to 8". Grows 2'-4' tall. Dormant in winter. Frost tolerant.

Habit: Bog

Bloom Color: blue-lavender

Lighting: Full-Sun

USDA Zone: 4

***Potentilla anserina (cn)*****Silverweed**

Yellow flowers in summer with serrated green foliage. CA native.

Low growing to 6" tall. Prefers boggy conditions. Spreads quickly by runners

Habit: Bog

Bloom Color: yellow

Lighting: Full-Sun

USDA Zone:

***Potentilla gracilis (cn)*****Fivefinger Marsh Cinquefoil**

Multi-stemmed with dark gray-green leaves and silvery undersides. Flowers are pale to dark yellow. CA native.

Grows 1-2.5 ft. Intolerant of shade.

Habit: Marginal

Bloom Color: yellow

Lighting: Full-Sun

USDA Zone:

***Ranunculus flammula (cn)*****Creeping Buttercup**

Shallow water plant. Creeping perennial, tiny yellow flowers, delicate foliage. Blooms throughout summer. Spread by runners. CA native.

Likes wet boggy soil. Grows to 1' height. Tolerates brackish water. Prefers cool climate.

Habit: Bog

Bloom Color: yellow

Lighting: Full-Sun

USDA Zone:

***Rosa californica (cn)*****California Wild Rose**

Deciduous shrub with single fragrant pink blossoms and red fruits. Good living fence. CA native.

Keep moist. Grows 3-5' tall.

Habit: Marginal

Bloom Color: pink

Lighting: Full-Sun

USDA Zone:

***Rotala indica (rotundifolia)*****Pink Sprite**

Marsh variety, with circular leaves. Free flowering in warm weather. Flower spikes with pink blooms. Also called Roundleaf Toothcup. Use in aquarium.

Compact and bushy. Trim frequently. Can be fully submerged. Must be wet at all times.

Habit: Emerging

Bloom Color: pink

Lighting: Full-Sun

USDA Zone:

***Ruellia brittoniana "Chi Chi"*****Pink Bellflower**

Small petunia-like pink flower with narrow deep green-purple leaves. Bushy.

Clumping growth. Grows 24"-36" height. Prefers moist boggy soil.

Habit: Marginal

Bloom Color: pink

Lighting: Sun or filtered

USDA Zone:

Bee Friendly - no neonicotinoids

Free of synthetic sprays/fertilizers

Irrigated with 100% recycled water

***Ruellia simplex*****Blue Bellflower**

Habit: Marginal

Bloom Color: blue

Lighting:

USDA Zone:

***Sagittaria australis*****Benni Silk Stocking Arrowhead**

Perennial herb with purple-green leaves in traditional arrowhead shape. Marsh plant. Best in bright shade.

Grows best in calm, shallow water. Height 1-2 ft. Dormant in winter.

Habit: Emerging

Bloom Color: white

Lighting: Part-Sun

USDA Zone:

***Sagittaria cuneata (cn)*****Arum Leaf Arrowhead**

Perennial marsh herb. Wide arrow shaped leaves, fleshy tuber like roots. Small white flowers grow on a single spike. CA native.

Grows best in calm, shallow water but can be submerged to 6". Height 1-2 ft. Dormant in winter.

Habit: Emerging

Bloom Color: white

Lighting: Sun or filtered

USDA Zone:

***Sagittaria lancifolia ruminoides*****Red Stemmed Sagittaria**

Thick upright red stems with elongated oval leaves. Clusters of white flowers in summer.

Sculptural, focal plant.

Wet soil or submerged to 6".

Habit: Bog

Bloom Color: white

Lighting: Sun or filtered

USDA Zone:

***Sagittaria latifolia (cn)*****Broadleaf Arrowhead**

Perennial herb. Very narrow leaves in arrowhead shape. Marsh plant. Small white flowers grow on a single spike. CA native.

Grows best in calm, shallow water but can be submerged to 6". Height 1-2 ft. Dormant in winter.

Habit: Emerging

Bloom Color: white

Lighting: Sun or filtered

USDA Zone:

***Sagittaria montevidensis (cn)*****Giant Arrowhead**

Aquatic freshwater herb found in shallow waters. Three white petal flowers with wine-red spots, grow on single stalk. CA native.

Grows best in calm, shallow water. Height 2'-3'. Hardy in mild winters. Can be submerged 12".

Habit: Emerging

Bloom Color: white

Lighting: Sun or filtered

USDA Zone:

***Salix alba 'Tristis'*****Golden Weeping Willow**

Delicate weeping, golden branches with light green leaves. Used to prevent erosion and provide shade.

Can be submerged. Grows to 80' height.

Habit: Marginal

Bloom Color:

Lighting: Full-Sun

USDA Zone:



Bee Friendly - no neonicotinoids

Free of synthetic sprays/fertilizers

Irrigated with 100% recycled water

***Salix babylonica*****Weeping Willow**

Tall deciduous tree with a thick trunk and graceful weeping branches of silver-green leaves.

Habit: Marginal

Bloom Color:

Lighting:

USDA Zone:

***Salix caprea*****Pink Pussy (Goat) Willow**

Large shrub or small tree. Whiplike, upright stems with showy pinkish male or green female flowers in late winter.

Thrives in moist soil, tolerates drier. Grows 10-20' tall. Tolerates part-shade. Hardy.

Habit: Marginal

Bloom Color:

Lighting: Full-Sun

USDA Zone: 4

***Salix exigua (cn)*****Sandbar Willow**

Tall shrub with narrow silky-gray leaves and gray bark. Good nectar source. Used for wetland restoration. CA native.

Keep moist. Grows 4-15' tall.

Habit: Bog

Bloom Color:

Lighting: Sun or filtered

USDA Zone:

***Salix integra 'Hakuro Nishiki'*****Dappled Pink Willow**

Small tree or shrub. Pink new foliage turns cream-white and green. Red stems in winter.

Grows 5'-10' tall. Prefers moist soil.

Habit: Marginal

Bloom Color:

Lighting: Full-Sun

USDA Zone:

***Salix laevigata (cn)*****Red Willow**

Deciduous shrub or tree with red-brown bark and pale leaves. Good for stream stabilization. CA native.

Keep moist. Grows to 45' tall.

Habit: Bog

Bloom Color:

Lighting: Full-Sun

USDA Zone:

***Salix matsudana 'Scarlet Curls'*****Scarlet Curly Willow**

Light green leaves with twisted, red-tinged curly branches. Used in flower arrangements.

Can be submerged. Grows to 20' height.

Habit: Marginal

Bloom Color:

Lighting:

USDA Zone:

***Salix matsudana 'Tortuosa'*****Curly Willow**

Light green leaves with twisted, curly branches. Used in flower arrangements. True tree.

Can be submerged. Grows to 20' height.

Habit: Marginal

Bloom Color:

Lighting: Full-Sun

USDA Zone:

Bee Friendly - no neonicotinoids

Free of synthetic sprays/fertilizers

Irrigated with 100% recycled water

***Salvia uliginosa*****Bog Sage**

Perennial shrub with sky-blue flowers. Blooms in late summer. Good butterfly plant. Tolerant of dry conditions.

Prefers wet soil. Cold hardy and heat tolerant. Grows 6-7' tall, 3' wide.

Habit: Bog      Bloom Color: blue-purple      Lighting: Full-Sun      USDA Zone: 8

***Sambucus mexicana (cn)*****Blue Elderberry**

Deciduous shrub or small tree. Grows along river and streams. Flat clusters of creamy yellow flowers then blue berries. CA native.

Grows 8-25' tall. Keep moist.

Habit: Marginal      Bloom Color: creamy yellow      Lighting: Sun or filtered      USDA Zone:

***Saururus cernuus*****Lizard's Tail**

Green heart-shaped leaves alternate on a long stem. Slightly curled spike of white flowers. Will flower in shade. Fragrant.

Dormant in winter. Sandy or boggy soil. Can be submerged to 6".

Habit: Bog      Bloom Color: white      Lighting: Sun or filtered      USDA Zone:

***Saururus cernuus ruminoides*****Red Stemmed Lizard's Tail**

Green heart-shaped foliage on red stems. Good marsh filter plant. White spike flower clusters.

Submerge 1"- 6". Grows to height of 3'.

Habit: Emerging      Bloom Color:      Lighting: Sun or filtered      USDA Zone:

***Saururus chinensis*****Chinese Lizard's Tail**

Glossy bright green foliage with white spike flower clusters. Textured leaves. Good for pollinators.

Submerge 1"- 6". Grows to height of 2'.

Habit: Emerging      Bloom Color:      Lighting: Sun or filtered      USDA Zone: 4

***Schoenoplectus acutus (cn)*****Giant Bulrush (Tule)**

Thick, erect green stems. Ecologically important as wind & current buffer, reducing erosion.

Provides wildlife habitat. Used for baskets. CA native.

Grows to 3-10' tall. Prefers partial submersion or bog.

Habit: Bog      Bloom Color:      Lighting: Full-Sun      USDA Zone: 3

***Schoenoplectus americanus (cn)*****Three-Square Bulrush**

Flowering rush with stiff three-angled stems. Food source for wildlife. CA native.

Keep moist. Grows to 2' tall.

Habit: Bog      Bloom Color:      Lighting: Full-Sun      USDA Zone:

Bee Friendly - no neonicotinoids

Free of synthetic sprays/fertilizers

Irrigated with 100% recycled water

***Schoenoplectus tabernaemontani***  
**'Albescens'****White Rush**

White to light green tubular stalks. Vertical and round narrow stems.

Slow growing. Prefers submersion 1-4". Grows 3-6' tall.

Habit: Bog

Bloom Color:

Lighting: Full-Sun

USDA Zone:

***Schoenoplectus zebrinus*****Zebra Rush**

Clumps of white-striped round stems. Stripes bright in spring, fade in summer.

Moist boggy soil. Can be submerged to 6". Dormant in winter.

Habit: Bog

Bloom Color:

Lighting: Full-Sun

USDA Zone:

***Scirpus cernuus (cn)*****Fiber Optic Grass**

Bright green evergreen foliage with graceful, weeping stems. Good container plant. CA native.

Grows to 10"-14" tall. Prefers moist soil. Can be submerged to 2". Heat tolerant.

Habit: Bog

Bloom Color:

Lighting: Sun or filtered

USDA Zone:

***Scirpus cernuus 'Dwarf Form'*****Dwarf Fiber Optic Grass**

Delicate, straight, short blades that bear a small bulb-like flower at tips.

Must be in water at all times. Prefers swampy areas. 2-3 inches tall.

Habit: Bog

Bloom Color:

Lighting: Full-Sun

USDA Zone:

***Sidalcea calycosa ssp. Rhizomata (cn)*****Point Reyes Checkerbloom**

Rare CA native groundcover for moist spots. Pink 1.5" blooms; round, glossy, scalloped leaves.

Vigorous. CA native.

May go dormant in drought conditions. Grows 6-12" tall.

Habit: Bog

Bloom Color: pink

Lighting: Sun or filtered

USDA Zone: 9

***Sisyrinchium bellum (cn)*****Blue Eyed Grass**

Small clumping grass with iris-like leaves. Blue star flowers grow at tip of leaf. Evergreen. CA native.

Grows to 12" tall. Grows in wetlands and woodlands.

Habit: Marginal

Bloom Color: blue

Lighting: Sun or filtered

USDA Zone:

***Sisyrinchium californicum (cn)*****Yellow Eyed Grass**

Small clumping grass with iris-like leaves. Yellow star flowers grow at tip of leaf. CA native.

Grows to 8" tall. Prefers moist soil. California native.

Habit: Marginal

Bloom Color: yellow

Lighting: Full-Sun

USDA Zone:

Bee Friendly - no neonicotinoids

Free of synthetic sprays/fertilizers

Irrigated with 100% recycled water

***Sisyrinchium sp.*****Graceful Yellow Eyed Grass**

Graceful clumping grass with iris-like leaves, taller than *S. californicum*. Yellow star flowers grow at tip of leaf.

Grows to 8-12" tall. Prefers moist soil.

Habit: Marginal

Bloom Color: yellow

Lighting: Full-Sun

USDA Zone:

***Symphoricarpos albus v. laevigatus*****Snowberry****(cn)**

Deciduous shrub with clusters of pinkish flowers then white berries. Understory plant, good bird habitat. CA native.

Grows 4' tall and spreading. Prefers part shade. Tolerates very moist and dry soil.

Habit: Marginal

Bloom Color: pink, white

Lighting: Part-Sun

USDA Zone:

***Tellima grandiflora (cn)*****Fringe Cups**

Mounds of soft foliage with many small flowers blooming green and changing to pink. CA native.

Clumping shade plant. Grows 18-24" tall. Tolerates very moist to dry soils.

Habit: Marginal

Bloom Color: green, pink

Lighting: Shade

USDA Zone:

***Thalia dealbata*****Powdery Alligator Flag**

Tall clumping aquatic plant. Elongated, broad, powdery leaves supported by a thick stem. Violet flowers grow on spike above foliage. Good with koi.

Hardy semi-tropical aquatic perennial. Grows 3-6' tall. Can be submerged to 12".

Habit: Bog

Bloom Color: mauve

Lighting: Full-Sun

USDA Zone: 5

***Thalia geniculata ruminoides*****Red-Stemmed Thalia**

Green, elongated leaves supported by large red stems with delicate lavender flowers. Tall clumping aquatic plant. Good with koi.

Hardy semi-tropical aquatic perennial. Grows 5-8' tall. Can be partially submerged. Frost tender.

Habit: Bog

Bloom Color: mauve

Lighting: Full-Sun

USDA Zone: 7

***Tradescantia sp.*****Spiderwort (purple)**

Narrow foliage with dark purple flower clusters. Bloom most of spring and summer.

Grows in clumps at water edge. Grows 1'-2' tall.

Habit: Marginal

Bloom Color: purple

Lighting: Sun or filtered

USDA Zone:

***Tradescantia sp.*****Spiderwort (dark pink)**

Narrow foliage with dark purple flower clusters. Bloom most of spring and summer.

Grows in clumps at water edge. Grows 1'-2' tall.

Habit: Marginal

Bloom Color: dark pink

Lighting: Sun or filtered

USDA Zone:

Bee Friendly - no neonicotinoids

Free of synthetic sprays/fertilizers

Irrigated with 100% recycled water

***Tradescantia sp.*****Spiderwort - Blue & Gold**

Golden narrow foliage with purple flower clusters. Bloom most of spring and summer.

Grows in clumps at water edge. Grows 1'-2' tall.

Habit: Marginal

Bloom Color: blue

Lighting: Sun or filtered

USDA Zone:

***Tulbaghia natalensis*****Sweet Society Garlic**

Long narrow leaves with delicate lavender flowers. Small plant. Clumping. Scent of cloves.

Clumping. Good container plant. Enjoys a lot of water. Sun for flowering. Height to 12".

Habit: Marginal

Bloom Color: mauve

Lighting: Sun or filtered

USDA Zone:

***Tulbaghia violacea*****Society Garlic**

Clumping perennial with narrow, straight, grayish-green leaves and clusters of lilac flowers.

Strong odor. Edible.

Good container plant. Enjoys a lot of water. Sun for flowering. Height to 12".

Habit: Marginal

Bloom Color: mauve

Lighting: Full-Sun

USDA Zone: 3

***Tulbaghia violacea 'Silver Lace'*****Variegated Society Garlic**

Clumping perennial with narrow, straight, variegated leaves and clusters of lilac flowers. Strong odor. Edible.

Good container plant. Enjoys a lot of water. Sun for flowering. Height to 12".

Habit: Marginal

Bloom Color: mauve

Lighting: Full-Sun

USDA Zone: 3

***Typha latifolia (cn)*****Common Cattail Rush (Cumbungi)**

Narrow-leaved tall plant with velvety brown flower head. Classic pond plant. Good bird habitat. CA native.

Submerge. Dies back in winter. Likes brackish water. Grows 4'-8' tall.

Habit: Emerging

Bloom Color:

Lighting: Full-Sun

USDA Zone: 4

***Typha latifolia Variegata*****Variegated Cattail Rush**

Narrow green and cream variegated foliage. Smaller than common cattail. Velvety brown flower head

Grows 3-5' tall. Submerge to 12". Moist at all times. Need cold in winter to produce catkins.

Habit: Emerging

Bloom Color:

Lighting: Sun or filtered

USDA Zone:

***Typha laxmannii*****Graceful Cattail Rush**

Flat, narrow leaves. Stalk topped with brown fluffy flower head. Similar to *Typha angustifolia*.

Submerge. Dies back in winter. Likes brackish water. Grows 3'-6' tall.

Habit: Emerging

Bloom Color:

Lighting: Full-Sun

USDA Zone:

Bee Friendly - no neonicotinoids

Free of synthetic sprays/fertilizers

Irrigated with 100% recycled water

***Typha minima*****Miniature Cattail Rush**

Smallest of the cattails. Narrow, upright grassy leaves. Small brown catkins in summer. Perennial.

Shallow or boggy soil to 6" submerged. Grows to 12"-18" height.

Habit: Bog

Bloom Color:

Lighting: Sun or filtered

USDA Zone: 3

***Vallisneria americana*****Eelgrass (3.5" pot)**

Shiny long, flat, limp green leaves with round tips. Tolerates brackish water. N Am native.

Must be fully submerged. Used on floor of pond or aquarium. Grows 1-6" tall. Prefers warm water

Habit: Submerged

Bloom Color:

Lighting: Full-Sun

USDA Zone: 4

***Veronica americana (cn)*****American Speedwell**

Dense patches of leafy stems with blue flowers. Perennial. Found in shallow water, vernal pools, swamps. Edible--like watercress. CA native.

Grows 4" tall, spreads 3'. Tolerates sandy and clay soils, cold, submergence. Spreads by seed.

Habit: Bog

Bloom Color: blue

Lighting: Sun or filtered

USDA Zone:

***Viola hederacea*****Australian Jumping Violet**

Pretty water-loving violet with white and purple blooms. Excellent for margins and stream beds.

Grows to 6" tall. Tolerates very moist conditions.

Habit: Marginal

Bloom Color: violet

Lighting: Full-Sun

USDA Zone:

***Vitis californica (cn)*****California Wild Grape**

Deciduous vine with clusters of small edible grapes. Grows along streams. CA native.

Prefers moist conditions. Grows laterally if not staked. Grows to 30'.

Habit: Marginal

Bloom Color:

Lighting: Full-Sun

USDA Zone:

***Wedelia trilobata*****Water Zinnia**

Shiny bright green leaves and trailing habit. Daisy like yellow flowers bloom into the fall.

Moist soil to 2" water. Grows 2-10" tall. Frost tender.

Habit: Bog

Bloom Color: yellow

Lighting: Sun or filtered

USDA Zone:

***Zantedeschia aethiopica 'Childsiana'*****Dwarf Calla Lily (Arum Lily)**

White, funnel-shaped flower, yellow spadix. Blooms early spring and autumn. Heart-shaped green leaves.

Prefers moist to very wet soil. Fertilize well. Hardy. Do not submerge.

Habit: Marginal

Bloom Color: white

Lighting: Part-Sun

USDA Zone: 3

Bee Friendly - no neonicotinoids

Free of synthetic sprays/fertilizers

Irrigated with 100% recycled water

***Zantedeschia 'Green Goddess'*****Green Goddess Calla Lily**

Funnel-shaped flower with white center that fades to green edges. Bloom early spring and in autumn. Taller than regular calla lily.

Prefers moist to very wet soil. Fertilize well. Hardy. Do not submerge.

Habit: Bog

Bloom Color: green, cream

Lighting: Part-Sun

USDA Zone: 3

***Zephyranthes candida*****Summer Crocus Rain Lily (white)**

White tubular crocus-like flowers are accented by bright green chive-like leaves. Evergreen.

Grows from bulb.

Grows to 12" height. Bloom late summer-fall. Can be container grown.

Habit: Marginal

Bloom Color: white

Lighting: Sun or filtered

USDA Zone: 7

***Zephyranthes candida*****Summer Crocus Rain Lily (yellow)**

Yellow tubular crocus-like flowers are accented by bright green chive-like leaves. Evergreen.

Grows from bulb.

Grows to 12" height. Blooms summer-fall. Can be container grown.

Habit: Marginal

Bloom Color: yellow

Lighting: Sun or filtered

USDA Zone: 7

(cn) = California Native

\* = can be invasive

***DO NOT INGEST PLANTS WITHOUT CONSULTING A PROFESSIONAL. Reference to edible aquatic plants is for general information only. Your own research should be undertaken prior to ingesting any part of of any plant. If not properly identified or not properly prepared, some plant parts can be toxic.***

